



Facade Lighting **CATALOGUE**

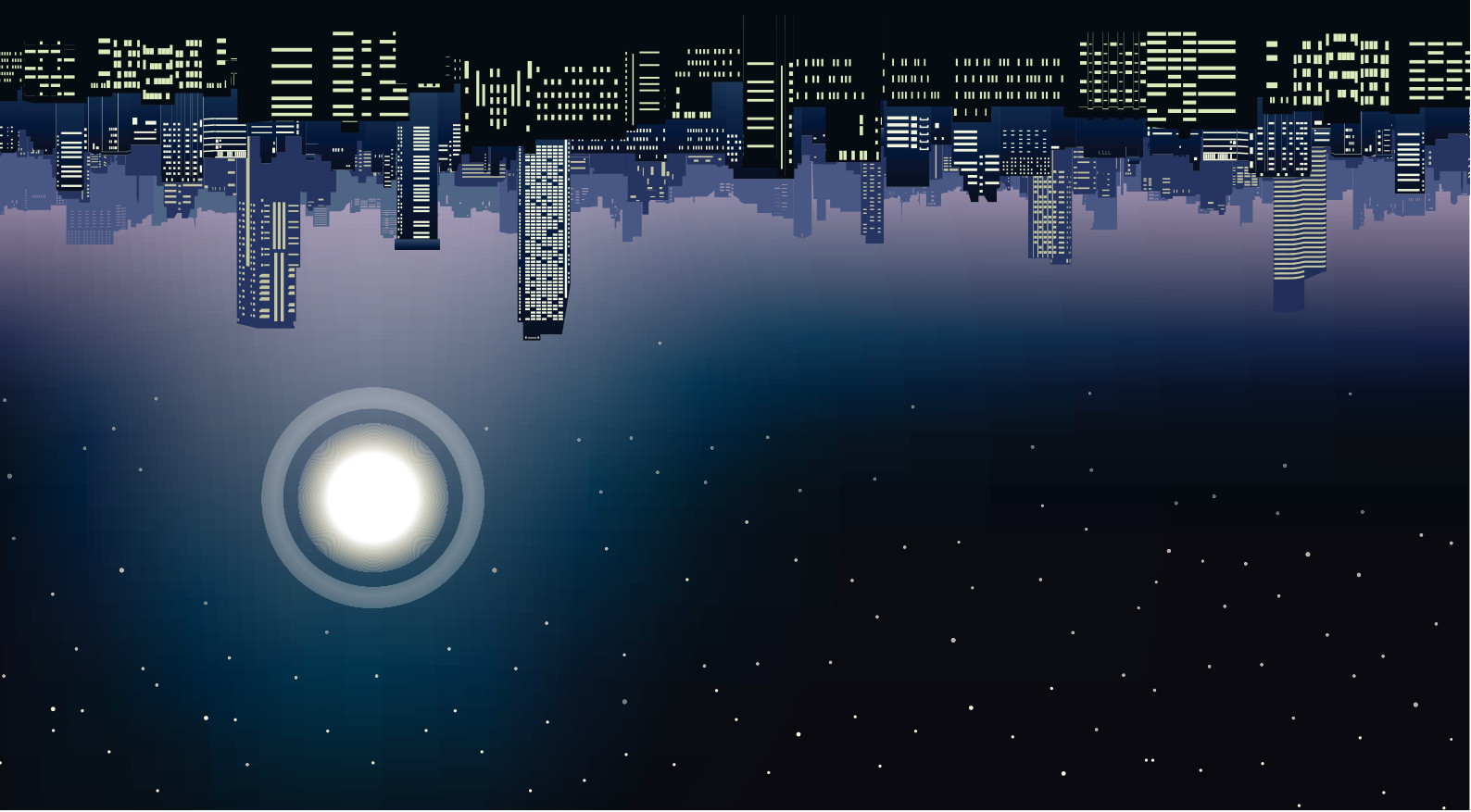
2024-2025

Who We Are

Smart lighting company established in 2016 as a lighting solution provider working with the projects from the designing phase passing through the products estimation till installing it on the site .

Based in the Egyptian market specialized at energy saving field by using led lighting systems, as we have factory that making over 50% of our products in Egypt with high quality according to universality specifications.

Smart lighting company is dealing with the elite of international companies specialized at the lighting systems, like (Cree - Osram - Schwabe - Bridgelux - Phillips - Samsung) in manufacturing chips field with both type (COB - SMD) and (Phillips - Meanwell - Schwabe - Tridonic) on manufacturing drivers.





Our Vision

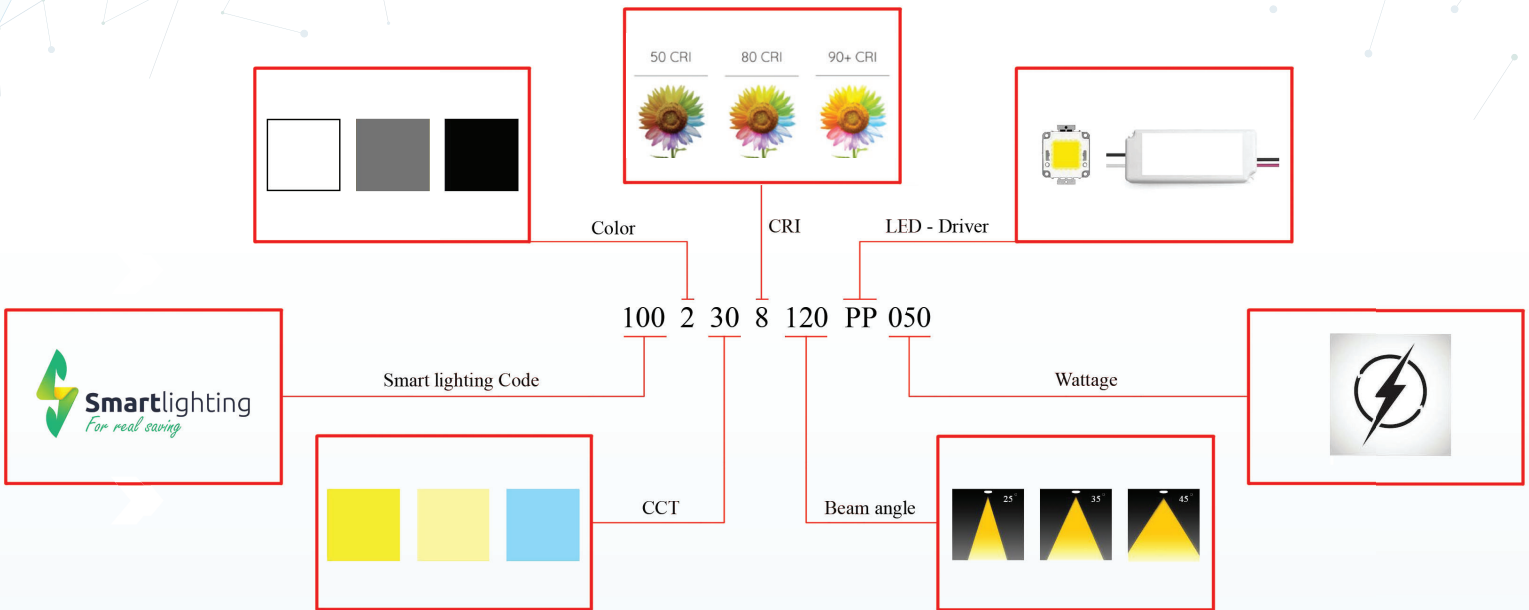
“To pioneer Egypt's LED lighting sector with cutting-edge, sustainable solutions, enriching lives and setting new benchmarks in the industry.”

Our Mission

- Our mission is to make and sell the latest version of led lighting systems , we believe that light is a part of every thing and its knowledge should be shared through our products and services .
- Highly qualified employees will bring both saving and safety to our valuable customers in the Egyptian market .
- With one of the strongest sales teams we will hit the numbers and keep our growth of profitability on the highest level.



CODING SYSTEM



FACADE

LIGHTING





Smart lighting

"Smart facade lighting adds a striking dimension to any building, combining aesthetic appeal with enhanced security and energy efficiency. Our innovative lighting solutions are designed to beautifully illuminate architectural features and create captivating visual effects, ensuring dependable performance in all conditions. Whether it's a residential, commercial, or industrial space, our facade lighting enhances the exterior, offering a perfect blend of style and functionality. Highlight your building's best features with intelligent lighting that enhances both form and function."



Up & Down

UD02



PERFORMANCE DATA

Efficacy : 100 Lm/W

Input Voltage : 110-240V

Frequency : 50Hz

Color Rendering : CRI 80

Color Temperature : 3000K

Life Time : 50,000 hrs

Optic : 36°

Class : I

MECHANICAL SPECIFICATIONS

Material : Die-casting Aluminum and extruded Aluminum

Mounting : Wall light, up and down version

Lens : Clear Glass

Finish : Gray RAL 7016

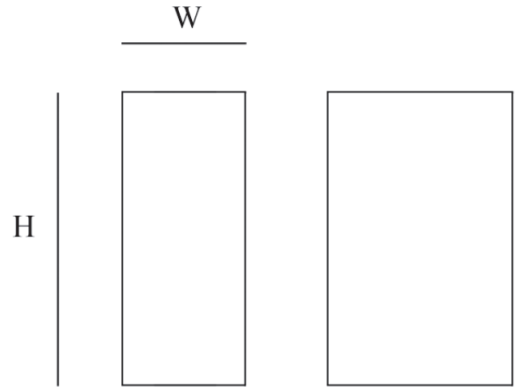
Protection Class : IP 65

Mechanical resistance : IK 08

OPTICS



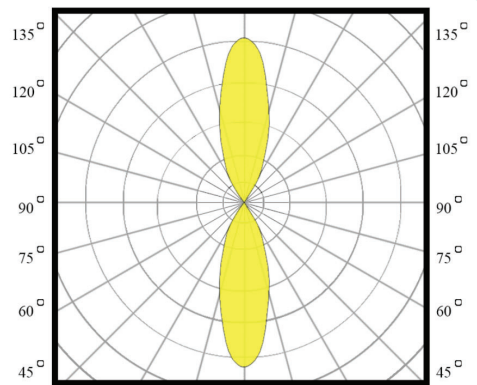
Code	Power W	Efficacy Lm/W	Colour Temp. K	Dimensions WxH mm	Driver	LED Chip	Weight
UD02230XXXXOTXXX	2*5 2*7	100	3000		Tridonic	Cree	



CUSTOMISZE OPTIONS

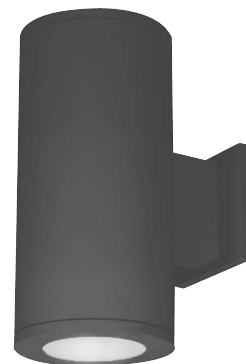
3K	4K	6.5K	CRI >80	DALI	IK10
Light Temperature 3000K	Light Temperature 4000K	Light Temperature 6500K	Color Rendering Index >80		

POLAR CURVE



Up & Down

UD04



PERFORMANCE DATA

Efficacy : 77.6 Lm/W

Input Voltage : 110-240V

Frequency : 50Hz

Color Rendering : CRI 80

Color Temperature : 3000K

Life Time : 50,000 hrs

Opic : 36°

Class : I

MECHANICAL SPECIFICATIONS

Material : Die-casting Aluminum and extruded Aluminum body

Mounting : Wall light, up and down version

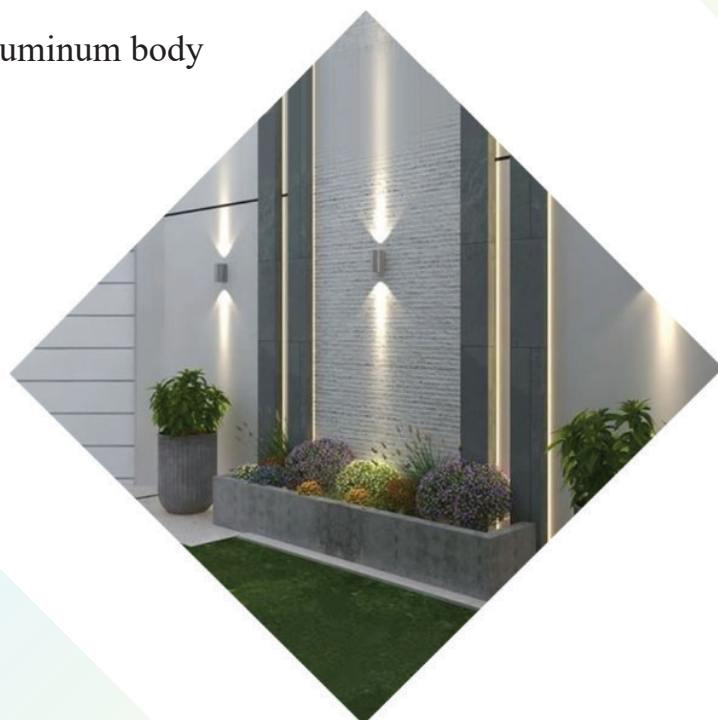
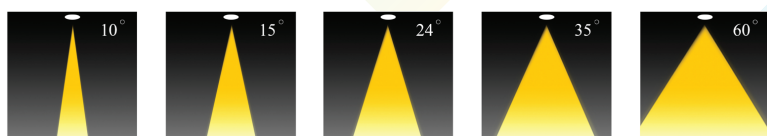
Lens : Clear Glass

Finish : Gray RAL 7016

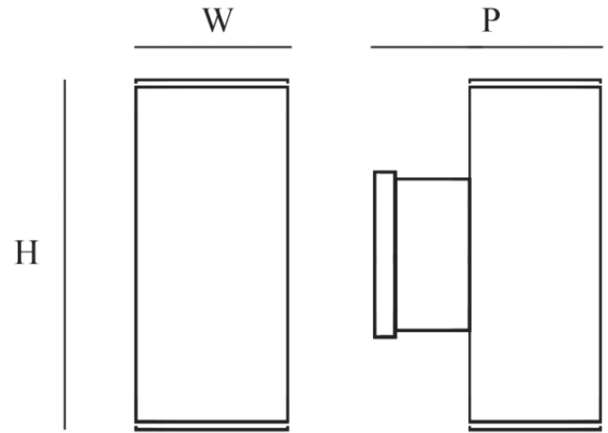
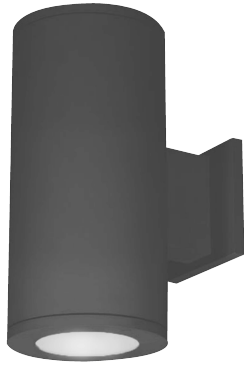
Protection Class : IP 65

Mechanical resistance : IK 08

OPTICS



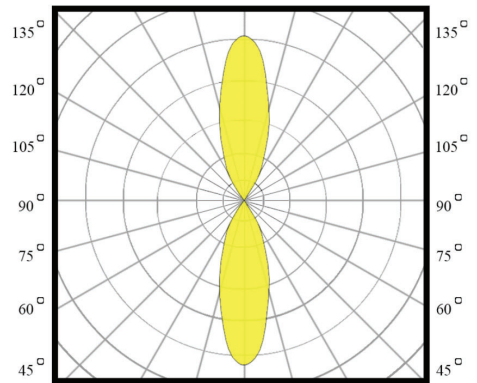
Code	Power W	Efficacy Lm/W	Colour Temp. K	Dimensions WxPxH mm	Driver	LED Chip	Weight Kg
UD04330X036CX030	2x15	77.6	3000	120x164.5x300 mm	Tridonic Done	Cree	1.865



CUSTOMISZE OPTIONS

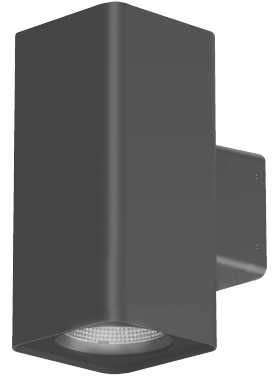
3K	4K	6.5K	CRI >80	DALI	IK10
Light Temperature 3000K	Light Temperature 4000K	Light Temperature 6500K	Color Rendering Index >80		

POLAR CURVE



Up & Down

UD05



PERFORMANCE DATA

Efficacy : 77.6 Lm/W

Input Voltage : 110-240V

Frequency : 50-60 Hz

Color Rendering : CRI 80

Color Temperature : 3000K

Life Time : 50,000 hrs

Optic : 36°

Class : I

MECHANICAL SPECIFICATIONS

Material : Die-casting Aluminum and extruded Aluminum body

Mounting : Surface/Wall Mounted

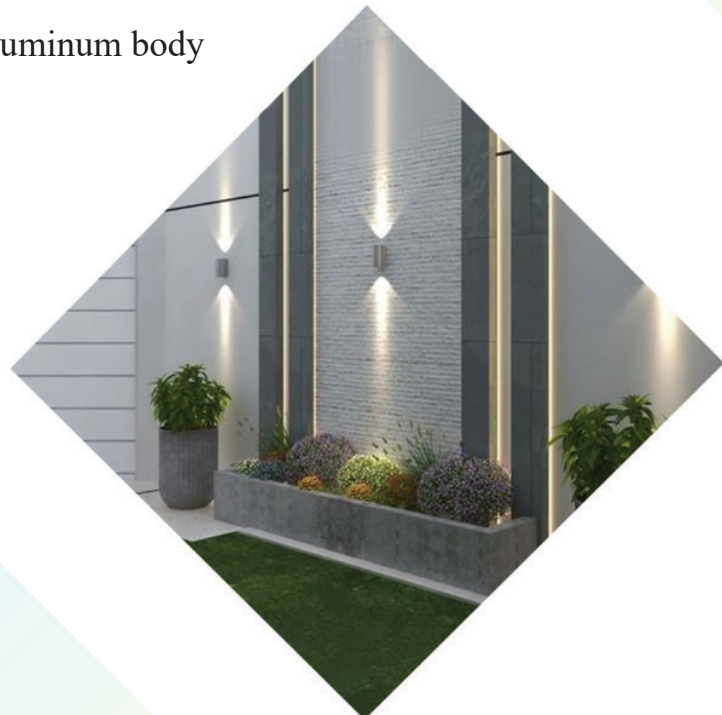
Lens : Clear glass

Finish : Black

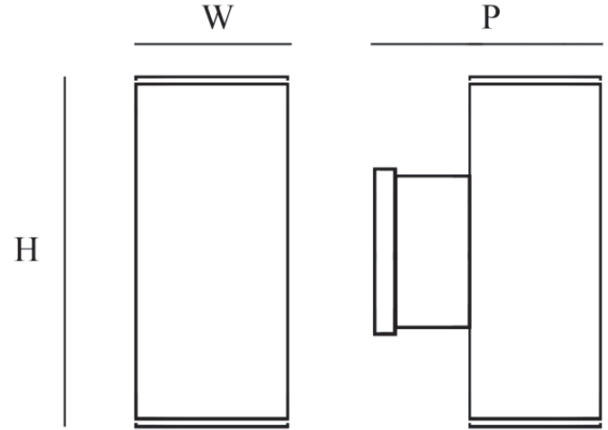
Protection Class : IP 65

Mechanical resistance : IK 08

OPTICS



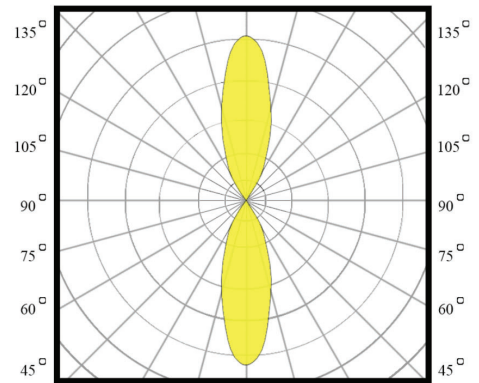
Code	Power W	Efficacy Lm/W	Colour Temp. K	Dimensions WxPxH mm	Driver	LED Chip	Weight Kg
UD05330X036CD030	2*15	77.6	3000	110x157x218 mm	Done	Cree	2.200



CUSTOMISZE OPTIONS

3K	4K	6.5K	CRI >80	DALI	IK10
Light Temperature 3000K	Light Temperature 4000K	Light Temperature 6500K	Color Rendering Index >80		

POLAR CURVE



Up & Down

UD06



PERFORMANCE DATA

Efficacy : 100 Lm/W

Input Voltage : 110-240V

Frequency : 50Hz

Color Rendering : CRI 80

Color Temperature : 3000K

Life Time : 50,000 hrs

Optic : 36°

Class : I

MECHANICAL SPECIFICATIONS

Material : Die-casting Aluminum and extruded Aluminum

Mounting : Wall light, up and down version

Lens : Clear Glass

Finish : Gray RAL 7016

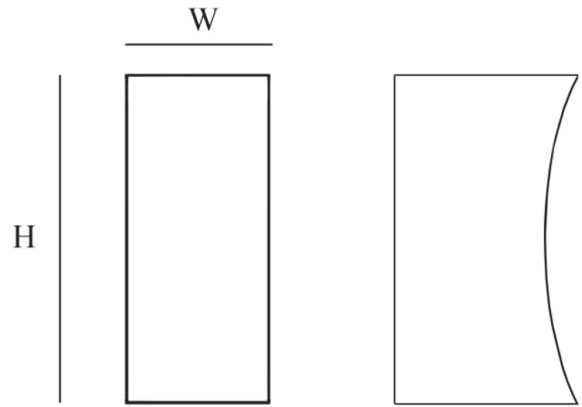
Protection Class : IP 65

Mechanical resistance : IK 08

OPTICS



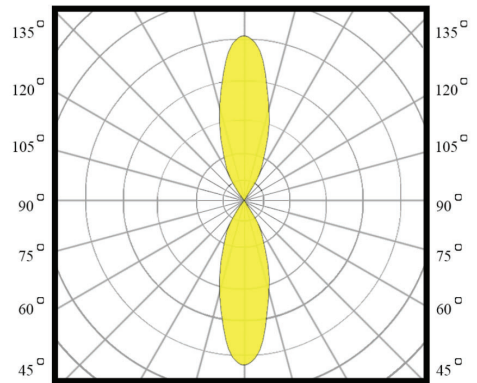
Code	Power W	Efficacy Lm/W	Colour Temp. K	Dimensions WxH mm	Driver	LED Chip	Weight
UD06230XXXXOTXXX	2*5 2*7	100	3000	92x200 mm	Tridonic	Osram	



CUSTOMISZE OPTIONS

3K	4K	6.5K	CRI >80	DALI	IK10
Light Temperature 3000K	Light Temperature 4000K	Light Temperature 6500K	Color Rendering Index >80		

POLAR CURVE



Up & Down

UD07



PERFORMANCE DATA

Efficacy : 100 Lm/W

Input Voltage : 110-240V

Frequency : 50Hz

Color Rendering : CRI 80

Color Temperature : 3000K

Life Time : 50,000 hrs

Beam Angle : 24°

Class : I

MECHANICAL SPECIFICATIONS

Material : Die-casting Aluminum and extruded Aluminum

Mounting : Wall light, up and down version

Lens : Clear Glass

Finish : Gray RAL 7016

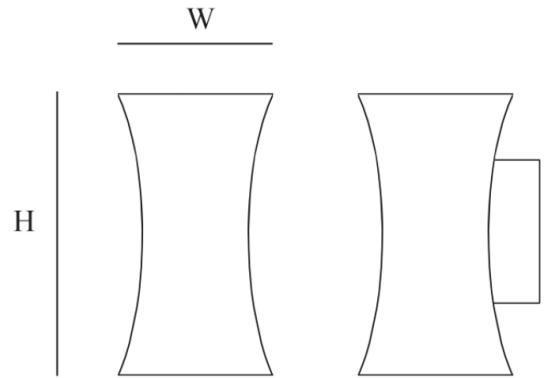
Protection Class : IP 65

Mechanical resistance : IK 08

OPTICS



Code	Power W	Efficacy Lm/W	Colour Temp. K	Dimensions WxH mm	Driver	LED Chip	Weight
UD07230XXXXOTXXX	2*5 2*7	100	3000	90x180 mm	Tridonic	Osram	



CUSTOMISZE OPTIONS

3K

Light
Temperature
3000K

4K

Light
Temperature
4000K

6.5K

Light
Temperature
6500K

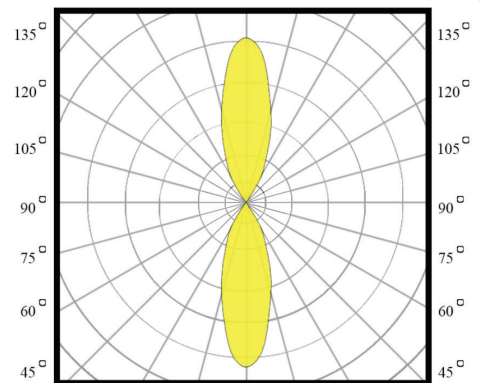
CRI
>80

Color
Rendering
Index >80

DALI

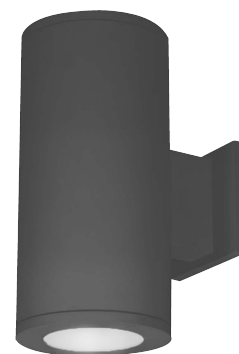
IK10

POLAR CURVE



Up & Down

UD-E27



PERFORMANCE DATA

Efficacy : 90 Lm/W

Input Voltage : 110-240V

Frequency : 50Hz

Color Rendering : CRI 80

Color Temperature : 3000K

Life Time : 15,000 hrs

Optic : 120°

Class : I

MECHANICAL SPECIFICATIONS

Material : Die-casting Aluminum and extruded Aluminum body

Mounting : Wall light, up and down version

Lens : Clear Glass

Finish : Gray RAL 7016

Protection Class : IP 65

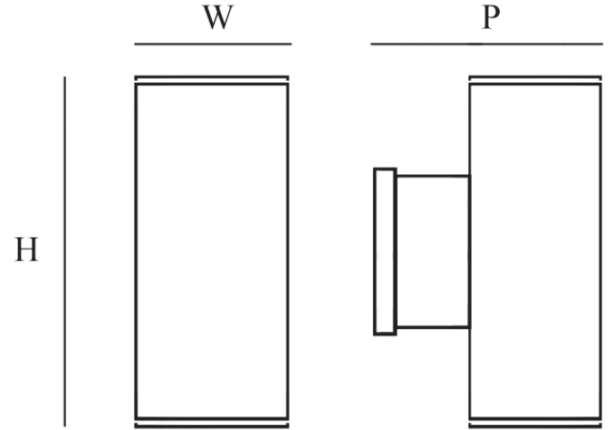
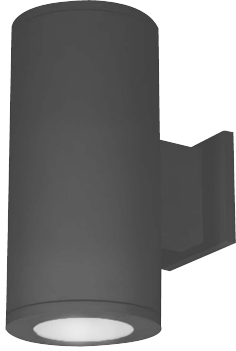
Mechanical resistance : IK 08



OPTICS



Code	Power W	Efficacy Lm/W	Colour Temp. K	Dimensions WxPxH mm	Driver	Lamp Base	Weight Kg
UD200	9 12 15	90	3000 4000 6000	120x164.5x300 mm	N/A	E27	1.300



CUSTOMISZE OPTIONS

3K

Light
Temperature
3000K

4K

Light
Temperature
4000K

6.5K

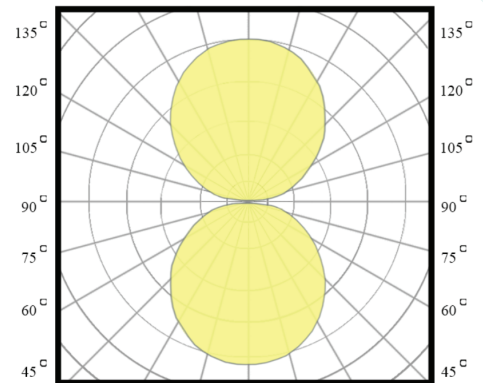
Light
Temperature
6500K

CRI
>80

Color
Rendering
Index >80

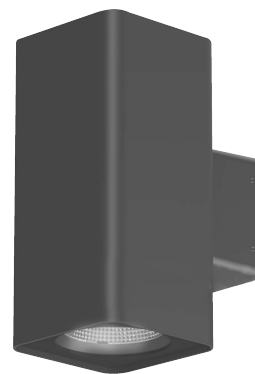
IK10

POLAR CURVE



Up & Down

UD-E27



PERFORMANCE DATA

Efficacy : 90 Lm/W

Input Voltage : 110-240V

Frequency : 50Hz

Color Rendering : CRI 80

Color Temperature : 3000K

Life Time : 15,000 hrs

Optic : 120°

Class : I

MECHANICAL SPECIFICATIONS

Material : Die-casting Aluminium and extruded Aluminium body

Mounting : Wall light, up and down version

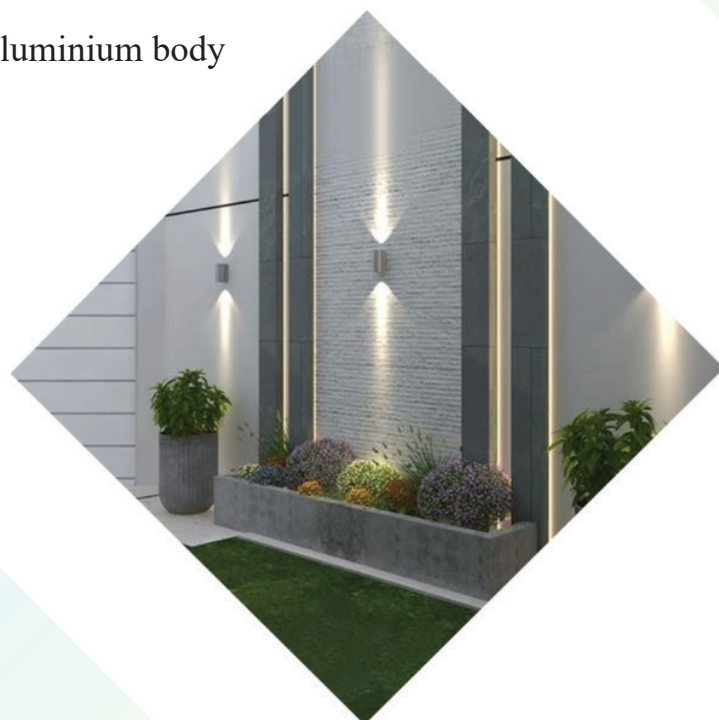
Lens : Clear Glass

Finish : Gray RAL 7016

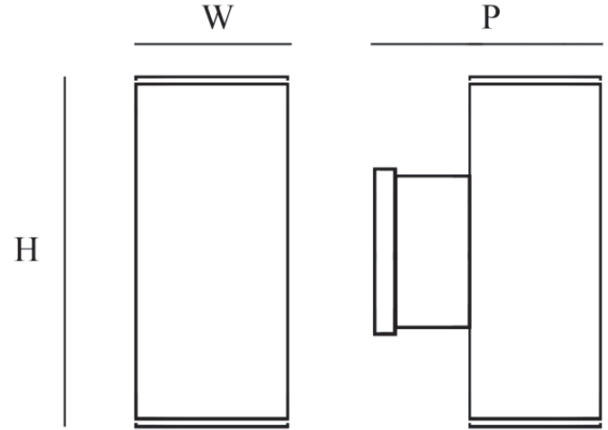
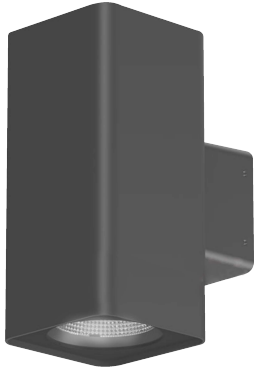
Protection Class : IP 65

Mechanical resistance : IK 08

OPTICS



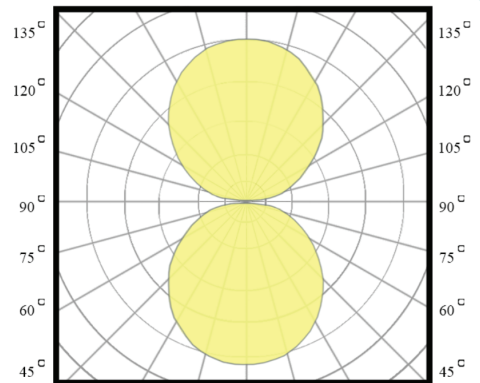
Code	Power W	Efficacy Lm/W	Colour Temp. K	Dimensions WxPxH mm	Driver	Lamp Base	Weight Kg
UD201	9 12 15	90	3000 4000 6000	120x146.5x300 mm	N/A	E27	1.510



CUSTOMISZE OPTIONS

3K	4K	6.5K	CRI >80	IK10
Light Temperature 3000K	Light Temperature 4000K	Light Temperature 6500K	Color Rendering Index >80	

POLAR CURVE



Up & Down

UD-E27



PERFORMANCE DATA

Efficacy : 90 Lm/W

Input Voltage : 110-240V

Frequency : 50Hz

Color Rendering : CRI 80

Color Temperature : 3000K

Life Time : 15,000 hrs

Optic : 120°

Class : I

MECHANICAL SPECIFICATIONS

Material : Die-casting Aluminum and extruded Aluminum body

Mounting : Wall light, up and down version

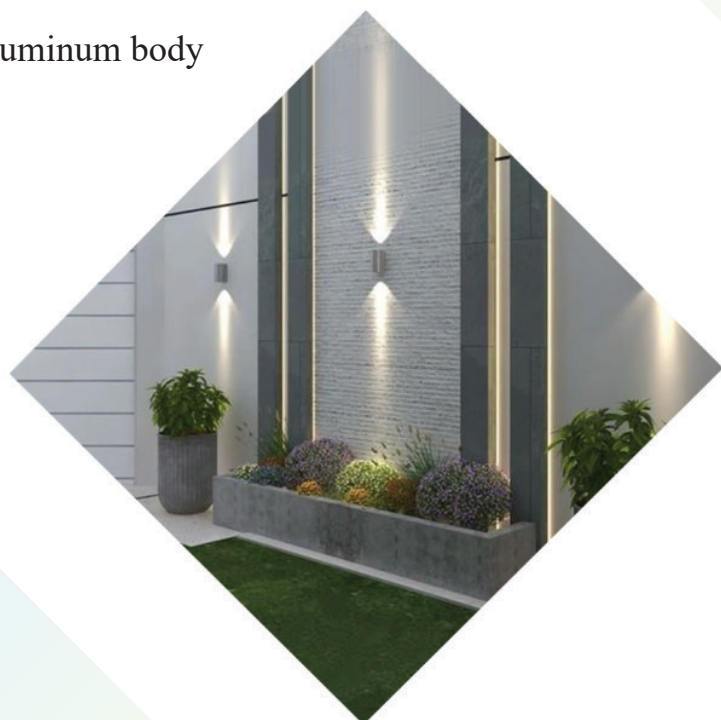
Lens : Clear Glass

Finish : Gray RAL 7016

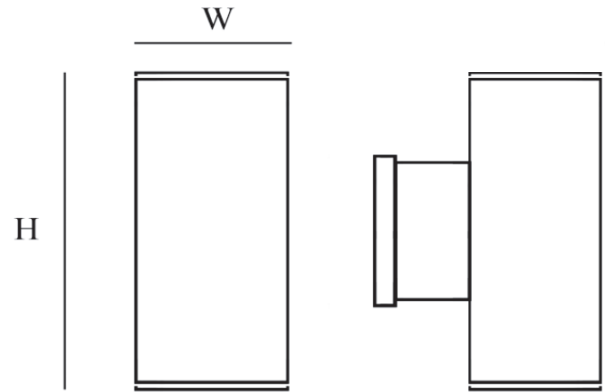
Protection Class : IP 65

Mechanical resistance : IK 08

OPTICS



Code	Power W	Efficacy Lm/W	Colour Temp. K	Dimensions WxH mm	Driver	Lamp Base	Weight Kg
UD202	9 12 15	90	3000 4000 6000	108x300 mm	N/A	E27	0.765



CUSTOMISZE OPTIONS

3K

Light
Temperature
3000K

4K

Light
Temperature
4000K

6.5K

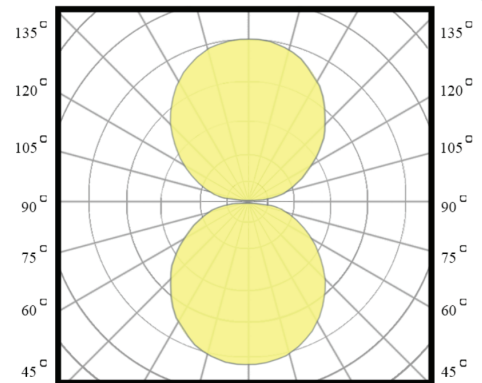
Light
Temperature
6500K

CRI
>80

Color
Rendering
Index >80

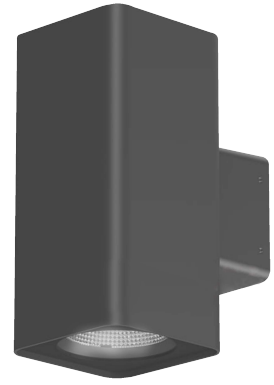
IK10

POLAR CURVE



Wall Decortive

SLT-1124



PERFORMANCE DATA

Efficacy : 90 Lm/W

Input Voltage : 110-240V

Frequency : 50Hz

Color Rendering : CRI 80

Color Temperature : 3000K

Life Time : 50,000 hrs

Optic : 120 °

Class : I

MECHANICAL SPECIFICATIONS

Material : Die-casting Aluminum and extruded Aluminum body

Mounting : Surface mounted

Lens : Clear Glass

Finish : Gray RAL 7016

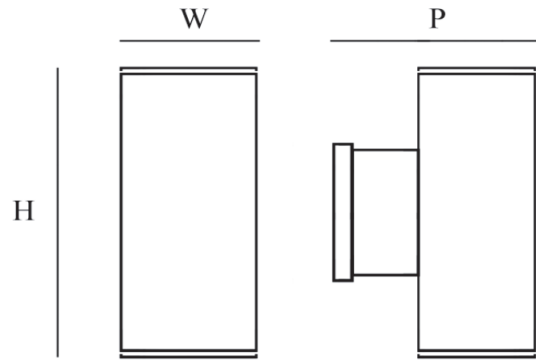
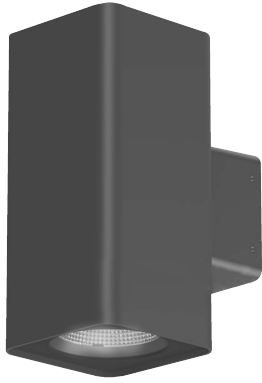
Protection Class : IP 65

Mechanical resistance : IK 08

OPTICS



Code	Power W	Efficacy Lm/W	Colour Temp. K	Dimensions WxPxH mm	Driver	LED Chip	Weight Kg
11243E27	9 12 15	90	3000 4000 6000	110x157x218 mm	N/A	E27	1.165



CUSTOMISZE OPTIONS

3K

Light
Temperature
3000K

4K

Light
Temperature
4000K

6.5K

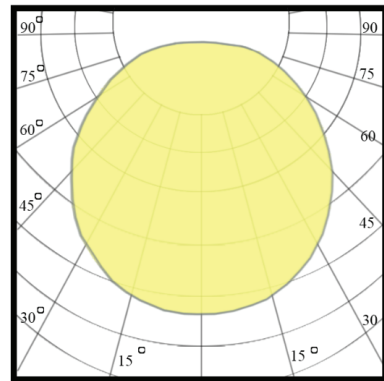
Light
Temperature
6500K

CRI
>80

Color
Rendering
Index >80

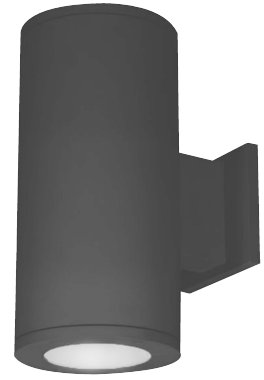
IK10

POLAR CURVE



Wall Decortive

SLT-1125



PERFORMANCE DATA

Efficacy : 90 Lm/W

Input Voltage : 110-240V

Frequency : 50Hz

Color Rendering : CRI 80

Color Temperature : 3000K

Life Time : 50,000 hrs

Optic : 120 °

Class : I

MECHANICAL SPECIFICATIONS

Material : Die-casting Aluminum and extruded Aluminum body

Mounting : Surface mounted

Lens : Clear Glass

Finish : Gray RAL 7016

Protection Class : IP 65

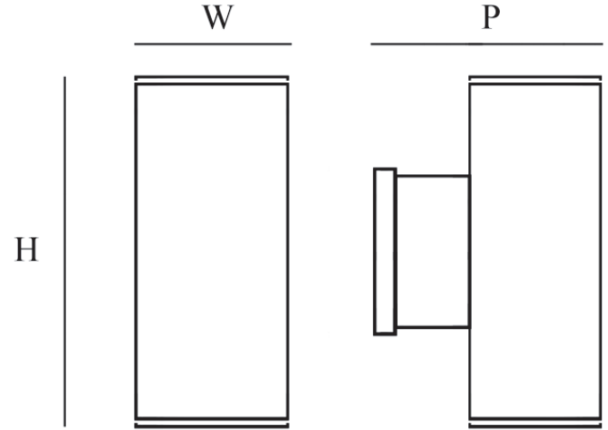
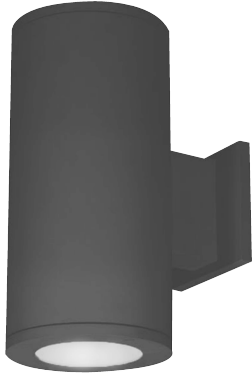
Mechanical resistance : IK 08



OPTICS



Code	Power W	Efficacy Lm/W	Colour Temp. K	Dimensions WxPxH mm	Driver	LED Chip	Weight Kg
11253E27	9 12 15	90	3000 4000 6000	120x146x218 mm	N/A	E27	1.035



CUSTOMISZE OPTIONS

3K

Light
Temperature
3000K

4K

Light
Temperature
4000K

6.5K

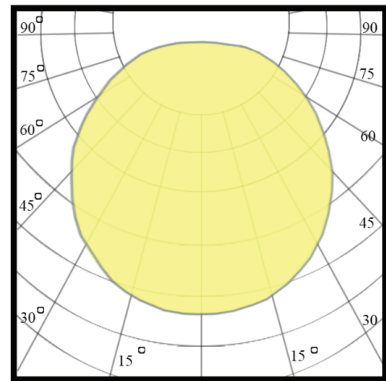
Light
Temperature
6500K

CRI
>80

Color
Rendering
Index >80

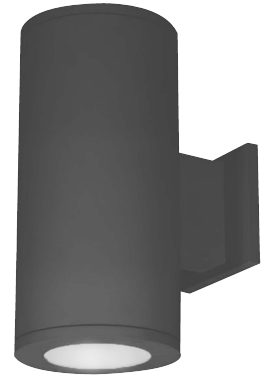
IK10

POLAR CURVE



Wall Decortive

SLT-1126



PERFORMANCE DATA

Efficacy : 77.6 Lm/W

Input Voltage : 110-240V

Frequency : 50-60 Hz

Color Rendering : CRI 80

Color Temperature : 3000K

Life Time : 50,000 hrs

Optic : 36°

Class : I

MECHANICAL SPECIFICATIONS

Material : Die-casting Aluminum and extruded Aluminum body

Mounting : Surface mounted

Lens : Clear glass

Finish : Black

Protection Class : IP 65

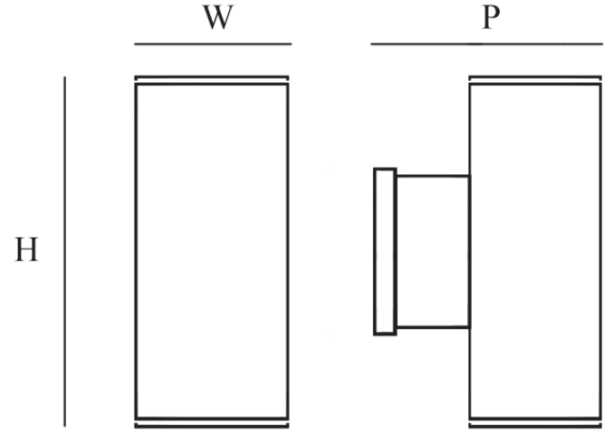
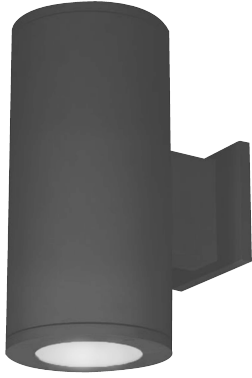
Mechanical resistance : IK 08



OPTICS



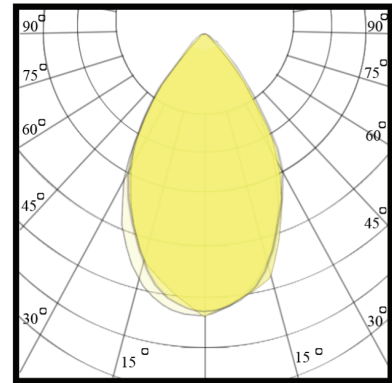
Code	Power W	Efficacy Lm/W	Colour Temp. K	Dimensions WxPxH mm	Driver	LED Chip	Weight Kg
1126330X036CD015	15	77.6	3000	110x157x218 mm	Done	Cree	1.275



CUSTOMISZE OPTIONS

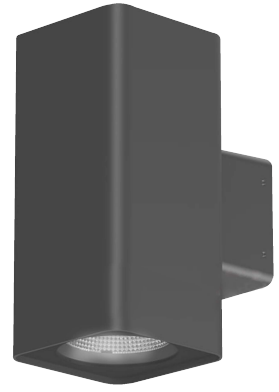
3K	4K	6.5K	CRI >80	DALI	IK10
Light Temperature 3000K	Light Temperature 4000K	Light Temperature 6500K	Color Rendering Index >80		

POLAR CURVE



Wall Decortive

SLT-1130



PERFORMANCE DATA

Efficacy : 79.8 Lm/W

Input Voltage : 110-240V

Frequency : 50-60 Hz

Color Rendering : CRI 80

Color Temperature : 3000K

Life Time : 50,000 hrs

Optic : 36°

Class : I

MECHANICAL SPECIFICATIONS

Material : Die-casting Aluminum and extruded Aluminum body

Mounting : Surface mounted

Lens : Clear glass

Finish : Black

Protection Class : IP 65

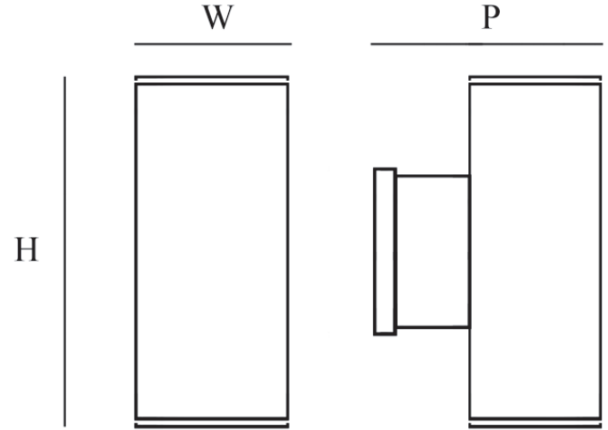
Mechanical resistance : IK 08



OPTICS



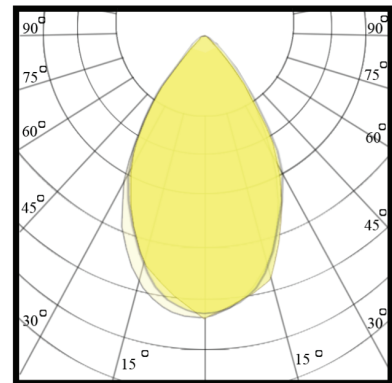
Code	Power W	Efficacy Lm/W	Colour Temp. K	Dimensions WxPxH mm	Driver	LED Chip	Weight Kg
1130330X036CD015	15	79.8	3000	110x157x218 mm	Done	Cree	1.500



CUSTOMISZE OPTIONS

3K	4K	6.5K	CRI >80	DALI	IK10
Light Temperature 3000K	Light Temperature 4000K	Light Temperature 6500K	Color Rendering Index >80		

POLAR CURVE



Projector

SLT-1127 - E27



PERFORMANCE DATA

Efficacy : 90 Lm/W

Input Voltage : 110-240V

Frequency : 50Hz

Color Rendering : CRI

Color Temperature : 3000K

Life Time : 15,000 hrs

Optic : 120 °

Class : I

MECHANICAL SPECIFICATIONS

Material : Die-casting Aluminum and extruded Aluminum body

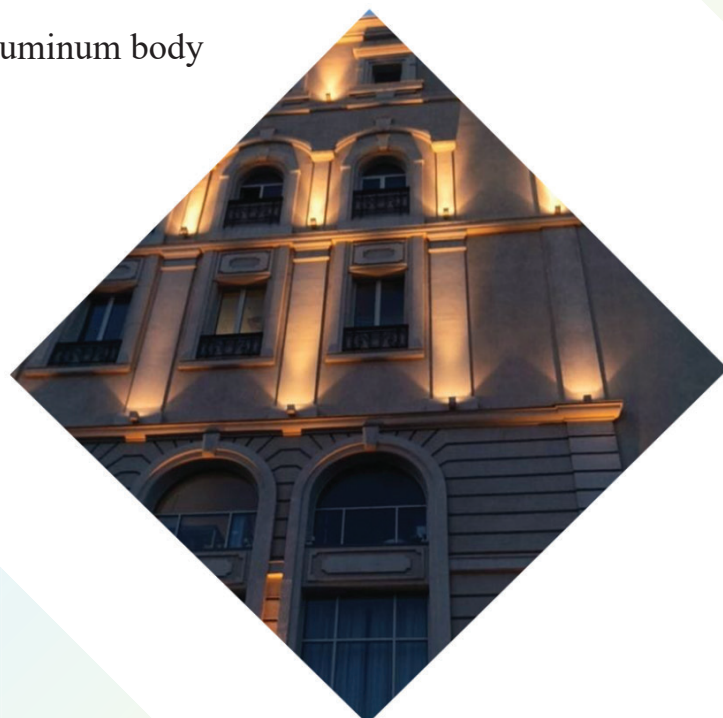
Mounting : Surface Wall light

Lens : Clear Glass

Finish : Gray RAL 7016

Protection Class : IP 65

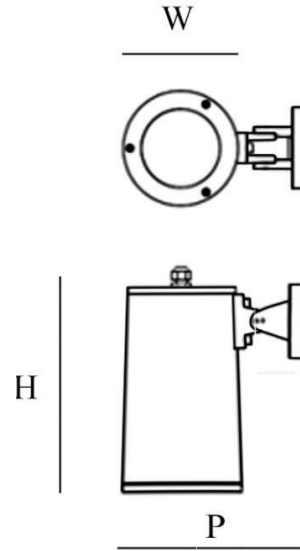
Mechanical resistance : IK 08



OPTICS



Code	Power W	Efficacy Lm/W	Colour Temp. K	Dimensions WxPxH mm	Driver	Lamp Base	Weight Kg
11273E27	9 12 15	90	3000 4000 6000	120x190x217 mm	N/A	E27	1.110



CUSTOMISZE OPTIONS

3K

Light
Temperature
3000K

4K

Light
Temperature
4000K

6.5K

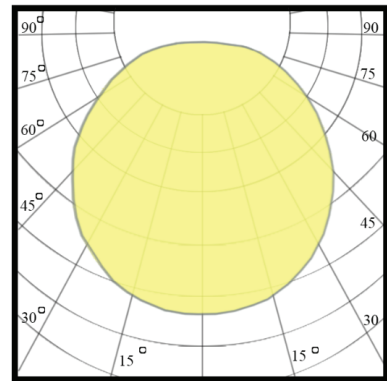
Light
Temperature
6500K

CRI
>80

Color
Rendering
Index >80

IK10

POLAR CURVE



Projector

SLT-1128



PERFORMANCE DATA

Efficacy : 79.8 Lm/W

Input Voltage : 110-240V

Frequency : 50-60 Hz

Color Rendering : CRI 80

Color Temperature : 3000K

Life Time : 50,000 hrs

Optic : 24°

Class : I

MECHANICAL SPECIFICATIONS

Material : Die-casting Aluminum and extruded Aluminum body

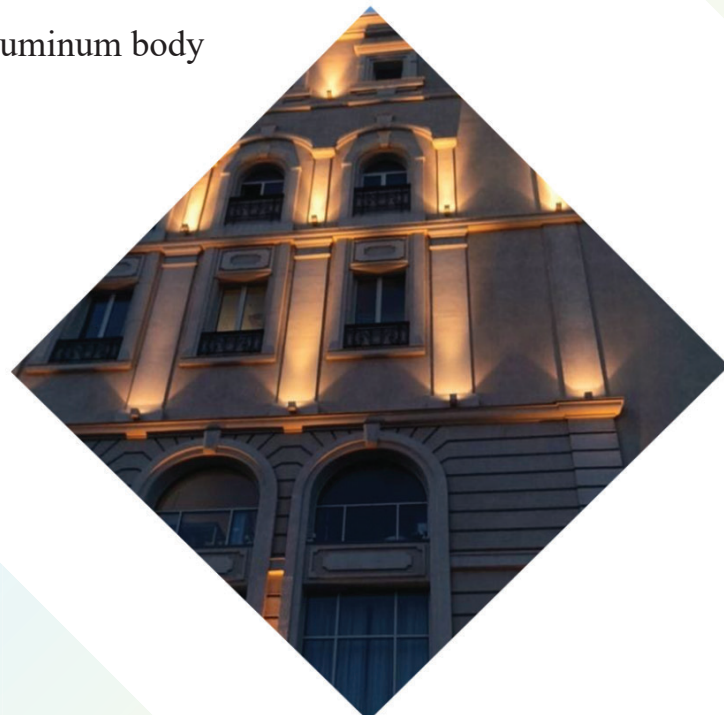
Mounting : Surface Wall light

Lens : Clear glass

Finish : Black

Protection Class : IP 65

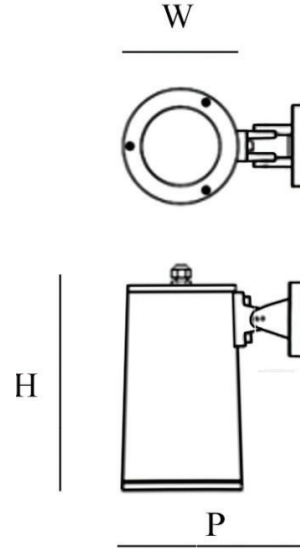
Mechanical resistance : IK 08



OPTICS



Code	Power W	Efficacy Lm/W	Colour Temp. K	Dimensions WxPxH mm	Driver	LED Chip	Weight Kg
1128330X024CD015	15	79.8	3000	120x190x217 mm	Done	Cree	1.405



CUSTOMISZE OPTIONS

3K

Light
Temperature
3000K

4K

Light
Temperature
4000K

6.5K

Light
Temperature
6500K

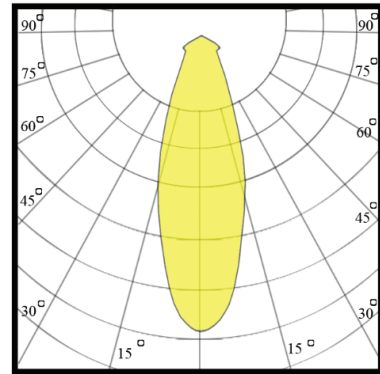
CRI
>80

Color
Rendering
Index >80

DALI

IK10

POLAR CURVE



Projector

SLT-P101



PERFORMANCE DATA

Efficacy : 88.7 Lm/W

Input Voltage : 110-240V

Frequency : 50-60 Hz

Color Rendering : CRI 80

Color Temperature : 3000K

Life Time : 50.000 hrs

Optic : 36°

Class : I

MECHANICAL SPECIFICATIONS

Material : Aluminum Die Cast

Mounting : Surface Mounted

Lens : Clear Tampered Glass

Finish : Gray RAL 7016

Protection Class : IP 65

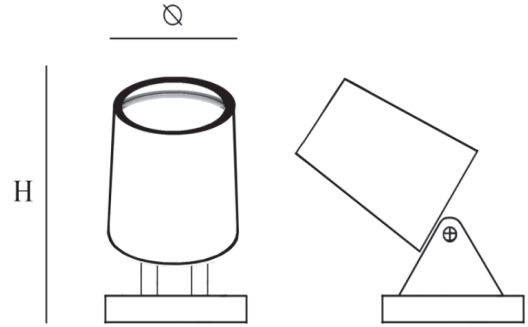
Mechanical Resistance : IK 08



OPTICS



Code	Power W	Efficacy Lm/W	Colour Temp. K	Dimensions ∅ xH mm	Driver	LED Chip	Weight
P101330X036CX010	10	88.7	3000	80x194 mm	Done Tridonic	Cree	



CUSTOMISZE OPTIONS

3K

Light
Temperature
3000K

4K

Light
Temperature
4000K

6.5K

Light
Temperature
6500K

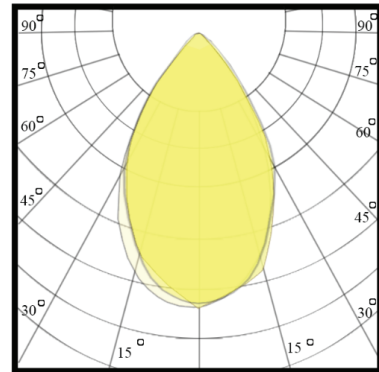
CRI
>80

Color
Rendering
Index >80

DALI

IK10

POLAR CURVE



Projector

SLT-P102



PERFORMANCE DATA

Efficacy : 90 Lm/W

Input Voltage : 110-240V

Frequency : 50-60 Hz

Color Rendering : CRI 80

Color Temperature : 3000K

Life Time : 50.000 hrs

Optic : 28°

Class : I

MECHANICAL SPECIFICATIONS

Material : Aluminum Die Cast

Mounting : Surface Mounted

Lens : Clear Tampered Glass

Finish : Gray RAL 7016

Protection Class : IP 65

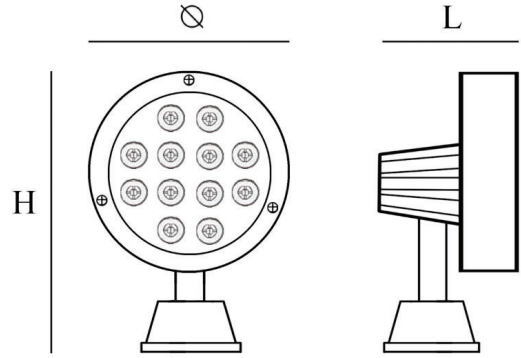
Mechanical Resistance : IK 08



OPTICS



Code	Power W	Efficacy Lm/W	Colour Temp. K	Dimensions ØxLxH mm	Driver	LED Chip	Weight Kg
P1022308XXXXCTXXX	10 14 20 24	90	3000	155x190x240 mm	Tridonic	Cree	



CUSTOMISZE OPTIONS

3K

Light
Temperature
3000K

4K

Light
Temperature
4000K

6.5K

Light
Temperature
6500K

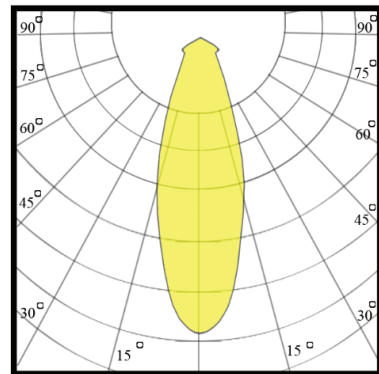
CRI
>80

Color
Rendering
Index >80

DALI

IK10

POLAR CURVE



Neon light

Led NEON Light 5MRoll



PERFORMANCE DATA

Efficacy : 100 Lm/W

Input Voltage : 12-24 VDC

Frequency : 50-60Hz

Color Rendering : CRI 80

Color Temperature : 3000K

Life Time : 50.000 hrs

Class : I

MECHANICAL SPECIFICATIONS

Material : Silicone Extrusion - UV Resistant

Mounting : Recessed - Surface

Lens : Silicon

Finish : White

Protection Class : IP 67

Mechanical Resistance : IK 08



OPTICS



Code	Power W	Efficacy Lm/W	Colour Temp. K	Dimensions Length / Roll	Driver	LED Chip	Weight
NEOLED014WM	14	100	3000	L5000×160×160mm	Meanweel	Osram	



CUSTOMISZE OPTIONS

3K

Light
Temperature
3000K

4K

Light
Temperature
4000K

6.5K

Light
Temperature
6500K

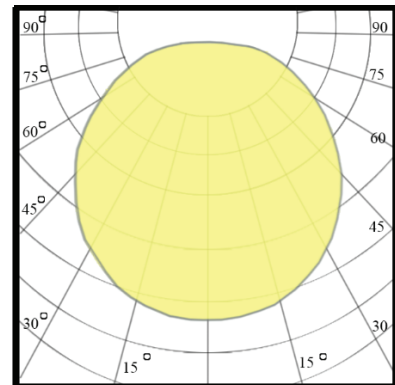
CRI
>80

Color
Rendering
Index >80

DALI

IK10

POLAR CURVE



Neon light

Led NEON Light 5MRoll



PERFORMANCE DATA

Efficacy : 100 Lm/W

Input Voltage : 12-24 VDC

Frequency : 50-60Hz

Color Rendering : CRI 80

Color Temperature : 3000K

Life Time : 50.000 hrs

Class : I

MECHANICAL SPECIFICATIONS

Material : Silicone Extrusion - UV Resistant

Mounting : Recessed - Surface

Lens : Silicon

Finish : White

Protection Class : IP 67

Mechanical Resistance : IK 08

OPTICS



Code	Power W	Efficacy Lm/W	Colour Temp. K	Dimensions Length / Roll	Driver	LED Chip	Weight
NEOLED014WM-AC	14	100	3000	L5000×160×160mm	AC	Osram	



CUSTOMISZE OPTIONS

3K

Light
Temperature
3000K

4K

Light
Temperature
4000K

6.5K

Light
Temperature
6500K

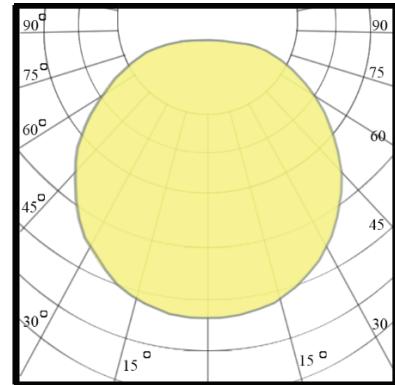
CRI
>80

Color
Rendering
Index >80

DALI

IK10

POLAR CURVE



Neon light

Led NEON Light 5MRoll



PERFORMANCE DATA

Efficacy : 100 Lm/W

Input Voltage : 12-24 VDC

Frequency : 50-60Hz

Color Rendering : CRI 80

Color Temperature : 3000K

Life Time : 50.000 hrs

Class : I

MECHANICAL SPECIFICATIONS

Material : Silicone Extrusion - UV Resistant

Mounting : Recessed - Surface

Lens : Silicon

Finish : White

Protection Class : IP 67

Mechanical Resistance : IK 08



OPTICS



Code	Power W	Efficacy Lm/W	Colour Temp. K	Dimensions Length / Roll	Driver	LED Chip	Weight
NEOLED010W/M	10	100	3000	L5000×160×160mm	Meanweel	Osram	



CUSTOMISZE OPTIONS

3K

Light
Temperature
3000K

4K

Light
Temperature
4000K

6.5K

Light
Temperature
6500K

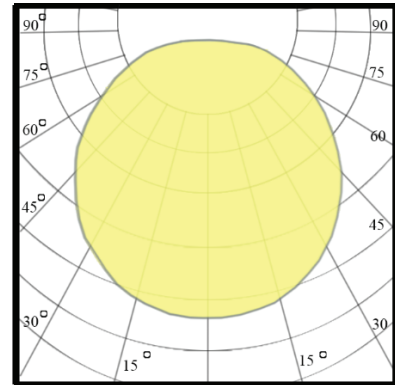
CRI
>80

Color
Rendering
Index >80

DALI

IK10

POLAR CURVE



Uplight

SLT-U004



PERFORMANCE DATA

Efficacy : 120 Lm/W

Input Voltage : 220VAC

Frequency : 50Hz

Color Rendering : CRI 80

Color Temperature : 3000K

Life Time : 50,000 hrs

Optic : 30°

Class : II

MECHANICAL SPECIFICATIONS

Material : Aluminum Die Cast- Stainless steel frame

Mounting : In ground

Lens : Glass

Finish : Silver

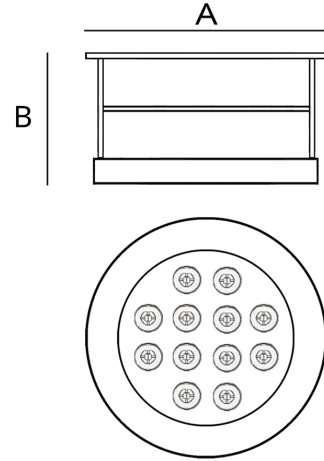
Protection Class : IP 67

Mechanical resistance : IK 08

OPTICS



Code	Power W	Efficacy Lm/W	Colour Temp. K	Dimensions A - B mm	Driver	LED Chip	Weight Kg
U043308030CXXXX	6 10 14	120	3000	130 x 110 mm 180 x 125 mm 180 x 125 mm	Tridonic Eaglerise	Cree	0.890



CUSTOMISZE OPTIONS

3K

Light
Temperature
3000K

4K

Light
Temperature
4000K

6.5K

Light
Temperature
6500K

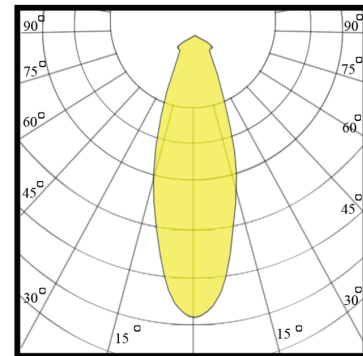
CRI
>80

Color
Rendering
Index >80

DALI

IK10

POLAR CURVE



Uplight

SLT-U005



PERFORMANCE DATA

Efficacy : 120 Lm/W

Input Voltage : 220VAC

Frequency : 50Hz

Color Rendering : CRI 80

Color Temperature : 3000K

Life Time : 50,000 hrs

Optic : 30°

Class : II

MECHANICAL SPECIFICATIONS

Material : Aluminum Die Cast- Stainless steel frame

Mounting : In ground

Lens : Glass

Finish : Silver

Protection Class : IP 67

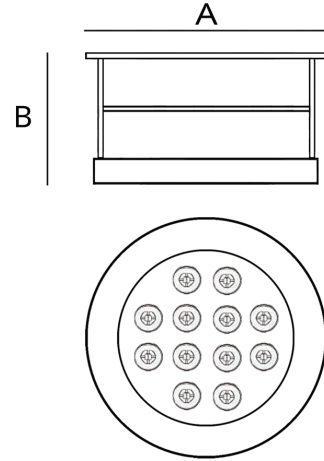
Mechanical resistance : IK 08



OPTICS



Code	Power W	Efficacy Lm/W	Colour Temp. K	Dimensions A - B mm	Driver	LED Chip	Weight Kg
U052308000CTXXX	10 12 14	120	3000	180 x 125 mm	Tridonic	Cree	1.770



CUSTOMISZE OPTIONS

3K

Light
Temperature
3000K

4K

Light
Temperature
4000K

6.5K

Light
Temperature
6500K

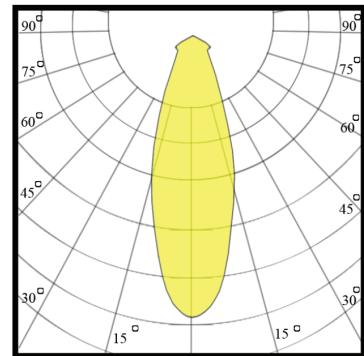
CRI
>80

Color
Rendering
Index >80

DALI

IK10

POLAR CURVE



Uplight

SLT-U007



PERFORMANCE DATA

Efficacy : 120 Lm/W

Input Voltage : 220VAC

Frequency : 50Hz

Color Rendering : CRI 80

Color Temperature : 3000K

Life Time : 50,000 hrs

Optic : 30°

Class : II

MECHANICAL SPECIFICATIONS

Material : Aluminum Die Cast- Stainless steel frame

Mounting : In ground

Lens : Glass

Finish : Silver

Protection Class : IP 67

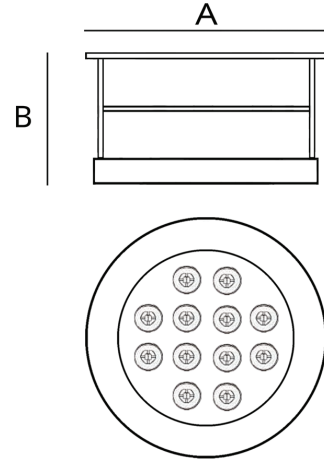
Mechanical resistance : IK 08



OPTICS



Code	Power W	Efficacy Lm/W	Colour Temp. K	Dimensions A - B mm	Driver	LED Chip	Weight Kg
U073308030CTXXX	18 20 24	120	3000	210 x 120 mm	Tridonic	Cree	2.350



CUSTOMISZE OPTIONS

3K

Light
Temperature
3000K

4K

Light
Temperature
4000K

6.5K

Light
Temperature
6500K

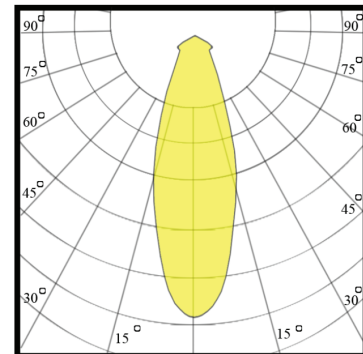
CRI
>80

Color
Rendering
Index >80

DALI

IK10

POLAR CURVE



Wall Washer

SLT-WW01



PERFORMANCE DATA

Efficacy : 114 Lm/W

Input Voltage : 220 - 240V

Frequency : 50-60Hz

Color Rendering : CRI 90

Color Temperature : 3000

Life Time : 50.000 hrs

Optic : 15°

Class : I

MECHANICAL SPECIFICATIONS

Material : Stainless Steel

Mounting : Recessed

Lens : Tempered Glass

Finish : Silver

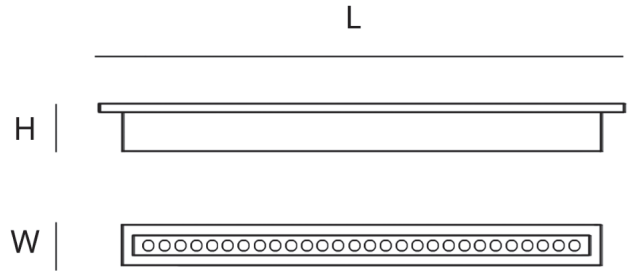
Protection Class : IP 67

Mechanical resistance : IK 10

OPTICS



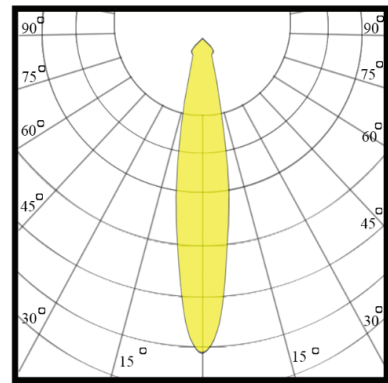
Code	Power W	Efficacy Lm/W	Colour Temp. K	Dimensions L x W x H mm	Driver	LED Chip	Weight
WW013309015CDXXX	27 54	114	3000	1200x90x90 mm	Done	Cree	



CUSTOMISZE OPTIONS

- 3K
Light
Temperature
3000K
- 4K
Light
Temperature
4000K
- 6.5K
Light
Temperature
6500K
- CRI
>80
Color
Rendering
Index >80
- DALI
- IK10

POLAR CURVE



Wall Washer

SLT-WW02



PERFORMANCE DATA

Efficacy : 114 Lm/W

Input Voltage : 220 - 240V

Frequency : 50-60Hz

Color Rendering : CRI 90

Color Temperature : 3000

Life Time : 50.000 hrs

Optic : 15°

Class : I

MECHANICAL SPECIFICATIONS

Material : Stainless Steel

Mounting : Surface

Lens : Tempered Glass

Finish : Gray

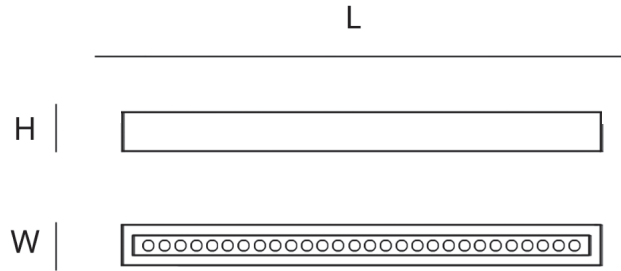
Protection Class : IP 67

Mechanical resistance : IK 10

OPTICS



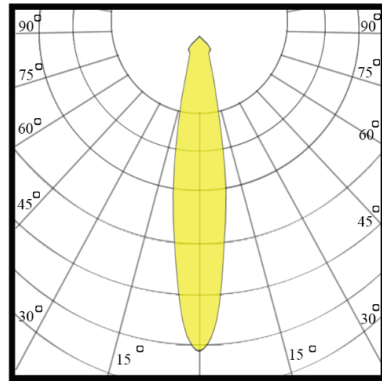
Code	Power W	Efficacy Lm/W	Colour Temp. K	Dimensions L x W x H mm	Driver	LED Chip	Weight Kg
WW023309015CDXXX	27 54	114	3000	1200x90x90 mm	Done	Cree	2.365



CUSTOMISZE OPTIONS

3K	4K	6.5K	CRI >80	DALI	IK10
Light Temperature 3000K	Light Temperature 4000K	Light Temperature 6500K	Color Rendering Index >80		

POLAR CURVE



Wall Washer

SLT-WW03



PERFORMANCE DATA

Efficacy : 114 Lm/W

Input Voltage : 220 - 240V

Frequency : 50-60Hz

Color Rendering : CRI 80

Color Temperature : 3000

Life Time : 50.000 hrs

Optic : 20°

Class : I

MECHANICAL SPECIFICATIONS

Material : Aluminium

Mounting : Surface

Lens : Polimer enjeksiyon, PMMA

Finish : RAL 7035

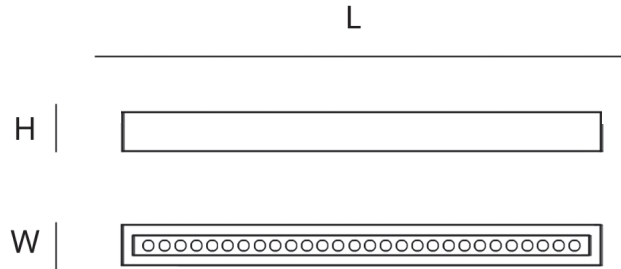
Protection Class : IP 67

Mechanical resistance : IK 08

OPTICS



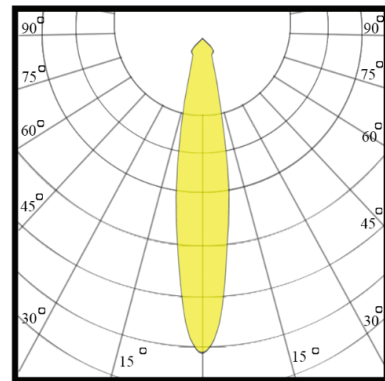
Code	Power W	Efficacy Lm/W	Colour Temp. K	Dimensions L x W x H mm	Driver	LED Chip	Weight Kg
WW033309015CDXXX	27	114	3000	650x56x66 mm	Done	Cree	1.400



CUSTOMISZE OPTIONS

3K	4K	6.5K	CRI >80	DALI	IK10
Light Temperature 3000K	Light Temperature 4000K	Light Temperature 6500K	Color Rendering Index >80		

POLAR CURVE



LED Strip

SLT-LS65-5M



PERFORMANCE DATA

Efficacy : 100 Lm/W

Input Voltage : 220 - 240V

Frequency : 50-60Hz

Color Rendering : CRI 80

Color Temperature : 3000K-4000K

Life Time : 50.000 hrs

Optic : 120 °

Class : III

MECHANICAL SPECIFICATIONS

Material : Thermoplastic

Mounting : Suspended, Surface

Lens : Rubber

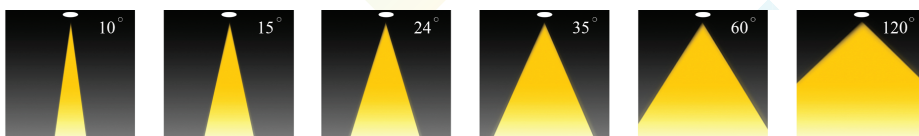
Finish : Black-White-Gray

Protection Class : IP 65

Mechanical Resistance : IK 03



OPTICS



Roll

Code	Power W/m	Efficacy Lm/m	Colour Temp. K	Length WxL(Reel) mm	Driver	LED Chip	Weight
STRLEDXXXW/M1P65	5 10	100	3000 4000	10×5000 mm	Meanwell	Osram	



CUSTOMISZE OPTIONS

3K

Light
Temperature
3000K

4K

Light
Temperature
4000K

6.5K

Light
Temperature
6500K

CRI
>80

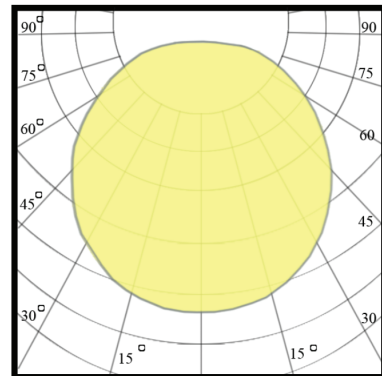
Color
Rendering
Index >80

FINISH

White
Gray

DALI

POLAR CURVE



OUR SUCCESS PARTNERS



"Thank you for trusting Us"

At Smart Lighting, We deeply value the trust you've placed in Us. Your confidence drives us to continually improve, innovate, and deliver the best in smart lighting solution. Every partnership we build is a testament to our commitment to quality, reliability, and excellence.

We are dedicated to earning the trust of more customers by consistently offering cutting-edge technology personalized support, and lighting solutions that meet the highest standards. Thank you for being a part of our journey, and we look forward to lighting the way to a brighter future together.


Our Customers


Our Customers




SMART LIGHTING

 Address : Fourth Industrial Zone, PART 38., Badr City, Cairo

 (+2) 02 8605058

 (+2) 011 277 555 01

 (+2) 011 277 555 15

 info@smartlightingco.com

 www.smartlightingco.com

