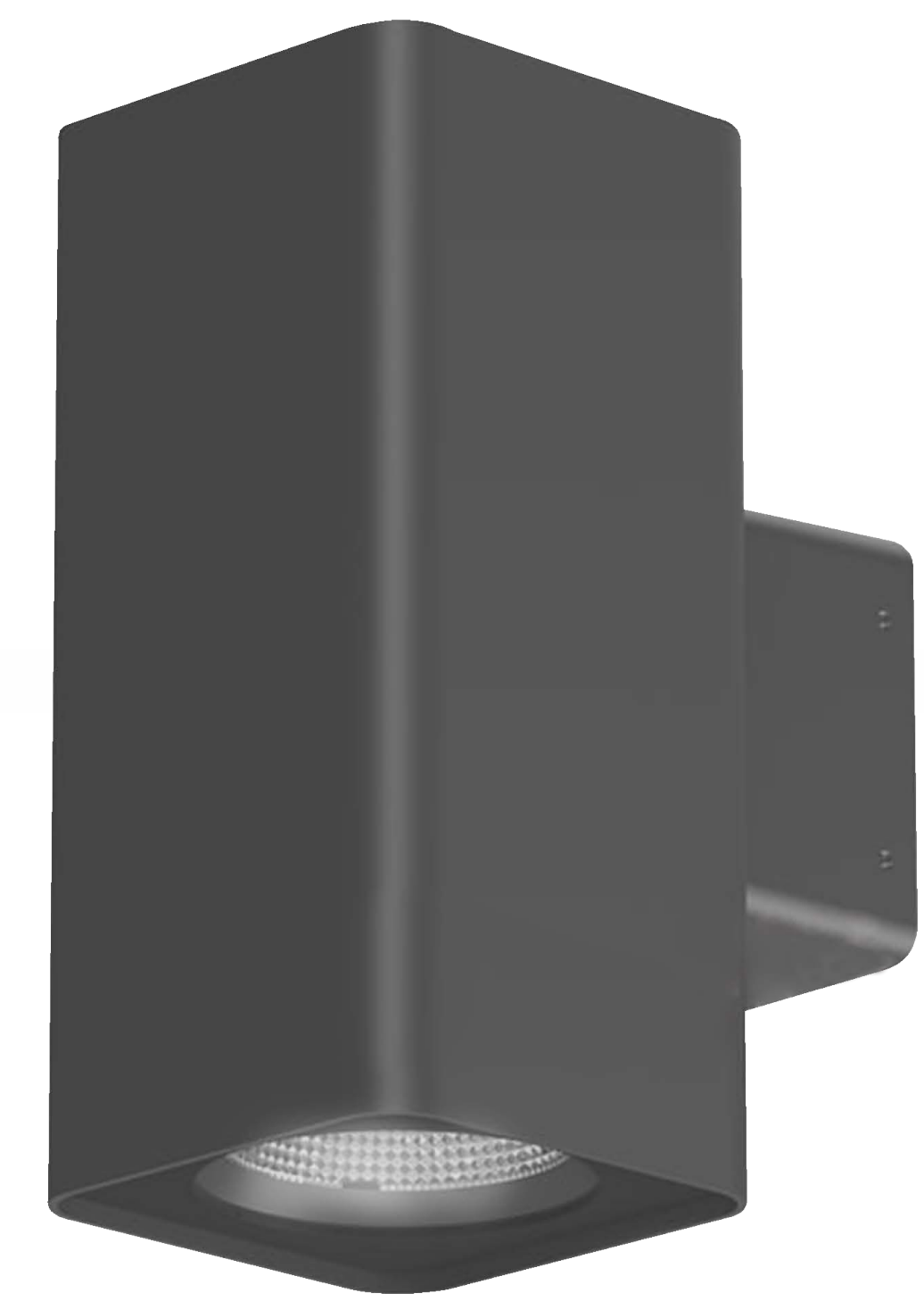


# Wall Decortive

SLT-1124



## PERFORMANCE DATA

**Efficacy :** 90 Lm/W

**Input Voltage :** 110-240V

**Frequency :** 50Hz

**Color Rendering :** CRI 80

**Color Temperature :** 3000K

**Life Time :** 50,000 hrs

**Optic :** 120 °

**Class :** I

## MECHANICAL SPECIFICATIONS

**Material :** Die-casting Aluminum and extruded Aluminum body

**Mounting :** Surface mounted

**Lens :** Clear Glass

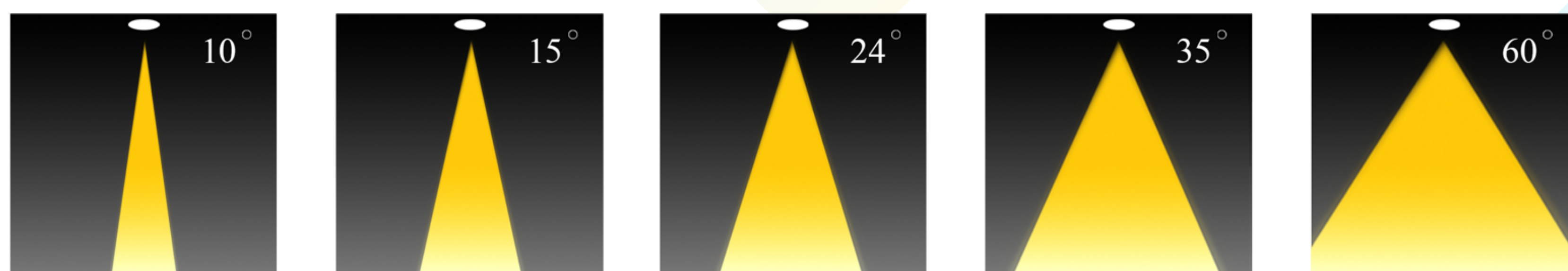
**Finish :** Gray RAL 7016

**Protection Class :** IP 65

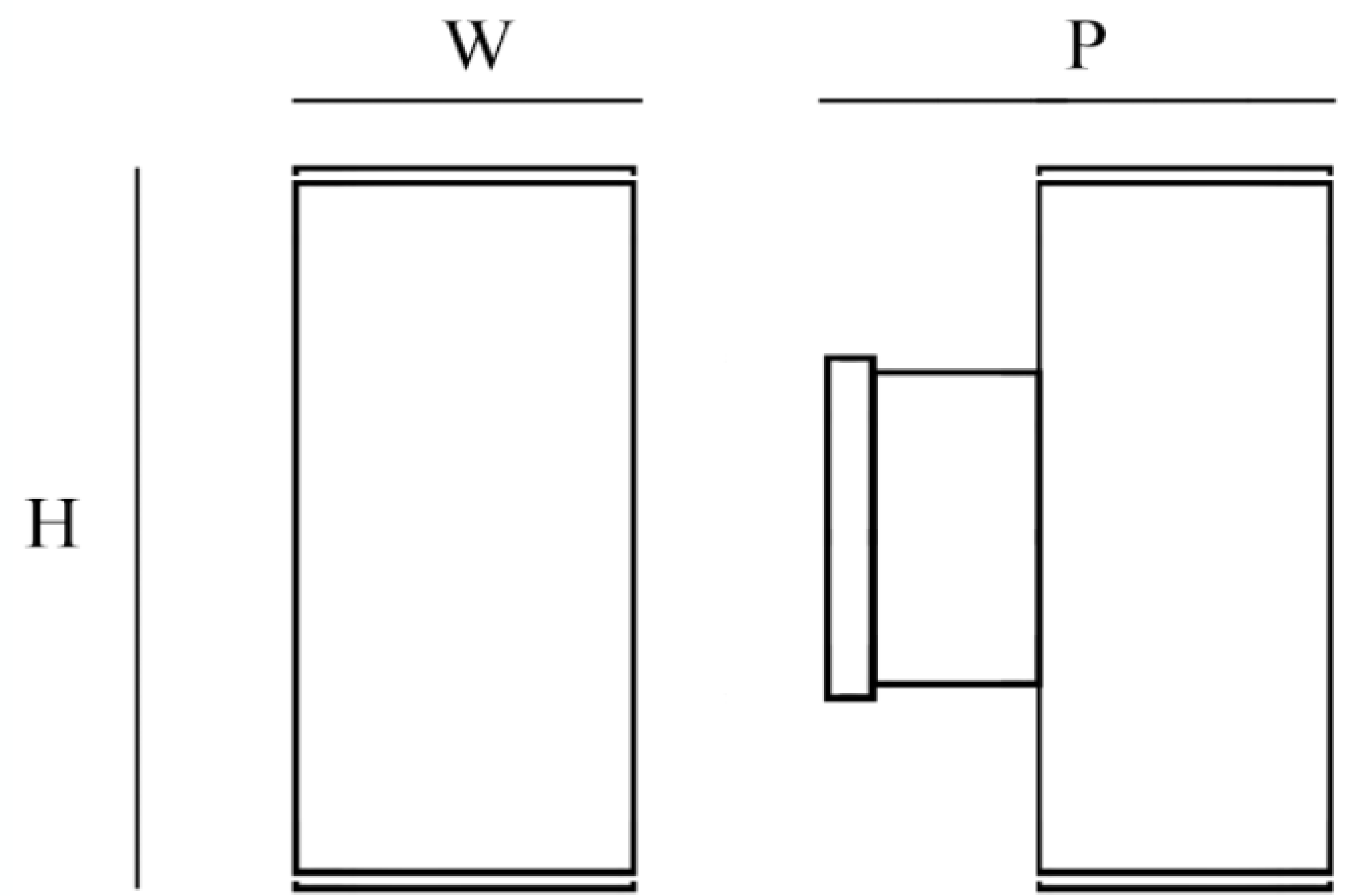
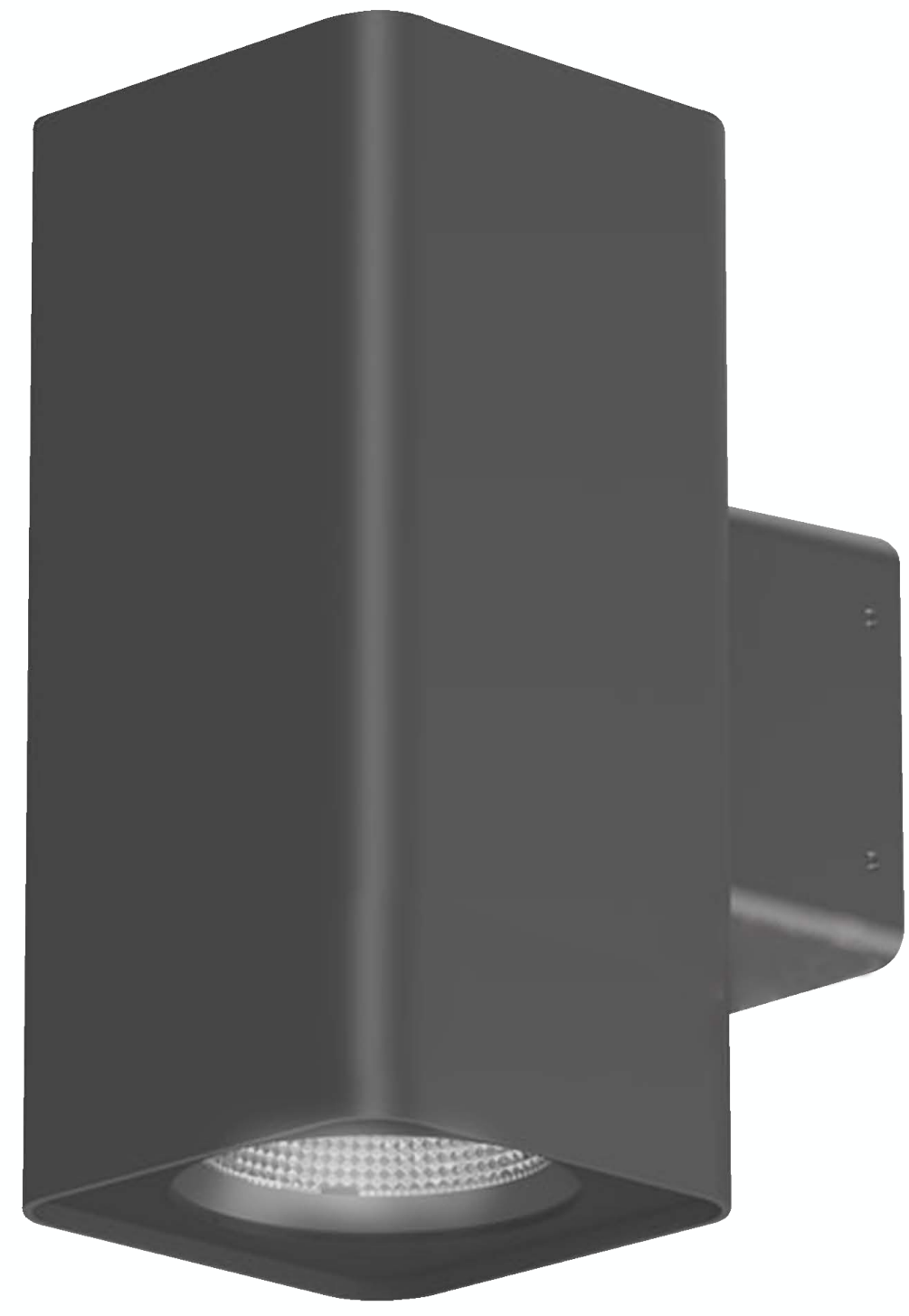
**Mechanical resistance :** IK 08



## OPTICS



| Code     | Power<br>W    | Efficacy<br>Lm/W | Colour Temp.<br>K    | Dimensions<br>WxPxH mm | Driver | LED Chip | Weight<br>Kg |
|----------|---------------|------------------|----------------------|------------------------|--------|----------|--------------|
| 11243E27 | 9<br>12<br>15 | 90               | 3000<br>4000<br>6000 | 110x157x218 mm         | N/A    | E27      | 1.165        |



## CUSTOMISZE OPTIONS

3K

Light  
Temperature  
3000K

4K

Light  
Temperature  
4000K

6.5K

Light  
Temperature  
6500K

CRI  
>80

Color  
Rendering  
Index >80

IK10

## POLAR CURVE

