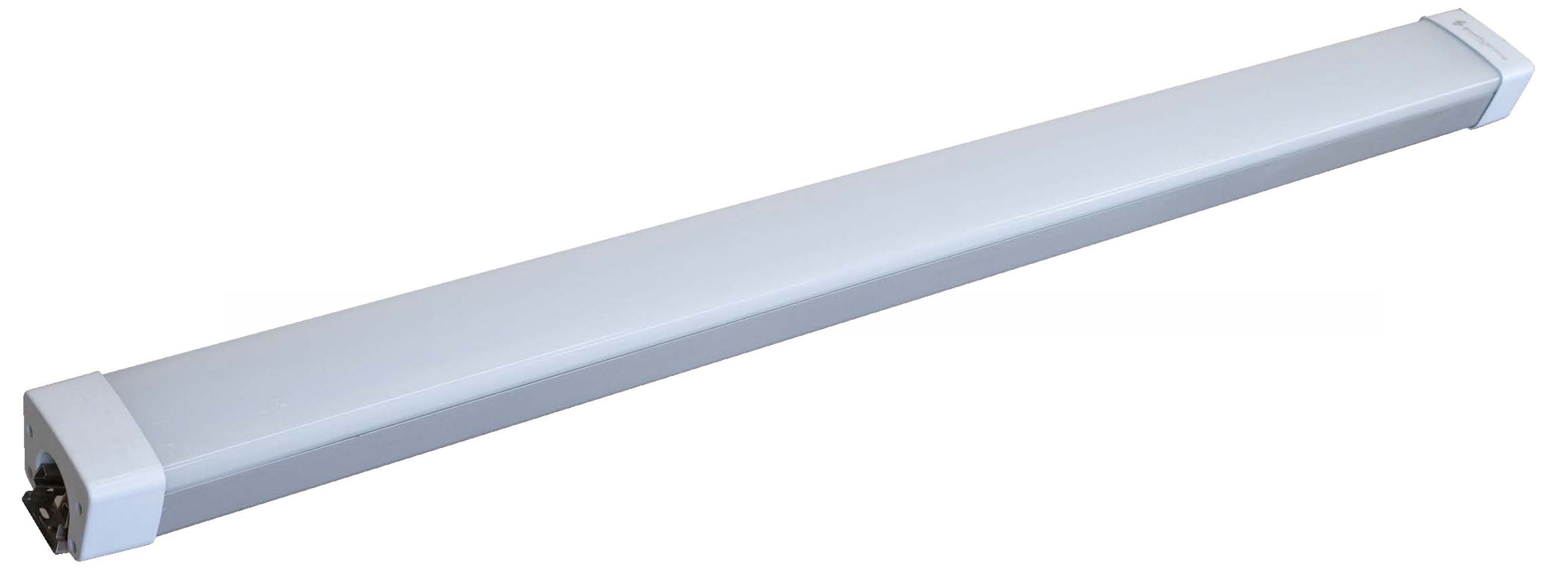


# Linear HighBay

SLT-2002



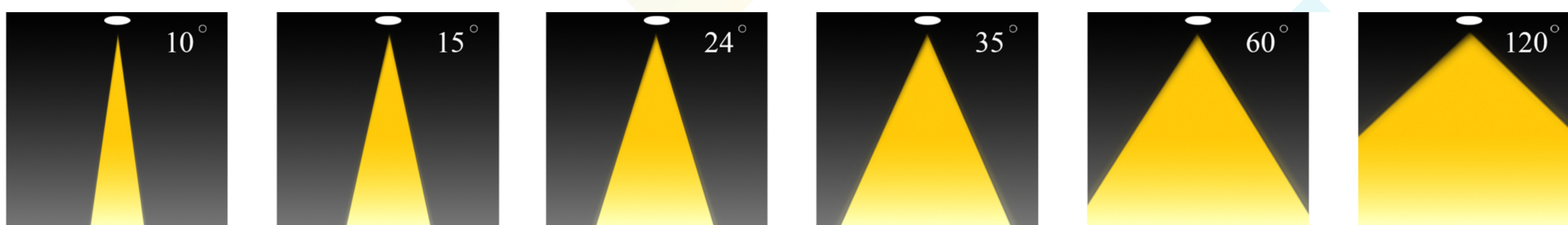
## PERFORMANCE DATA

**Efficacy :** 110-130 Lm/W  
**Input Voltage :** AC100-240W  
**Frequency :** 50-60Hz  
**Color Rendering :** CRI 80  
**Color Temperature :** 4000K  
**Life Time :** 50.000 hrs  
**Optic :** 120°  
**Class :** I

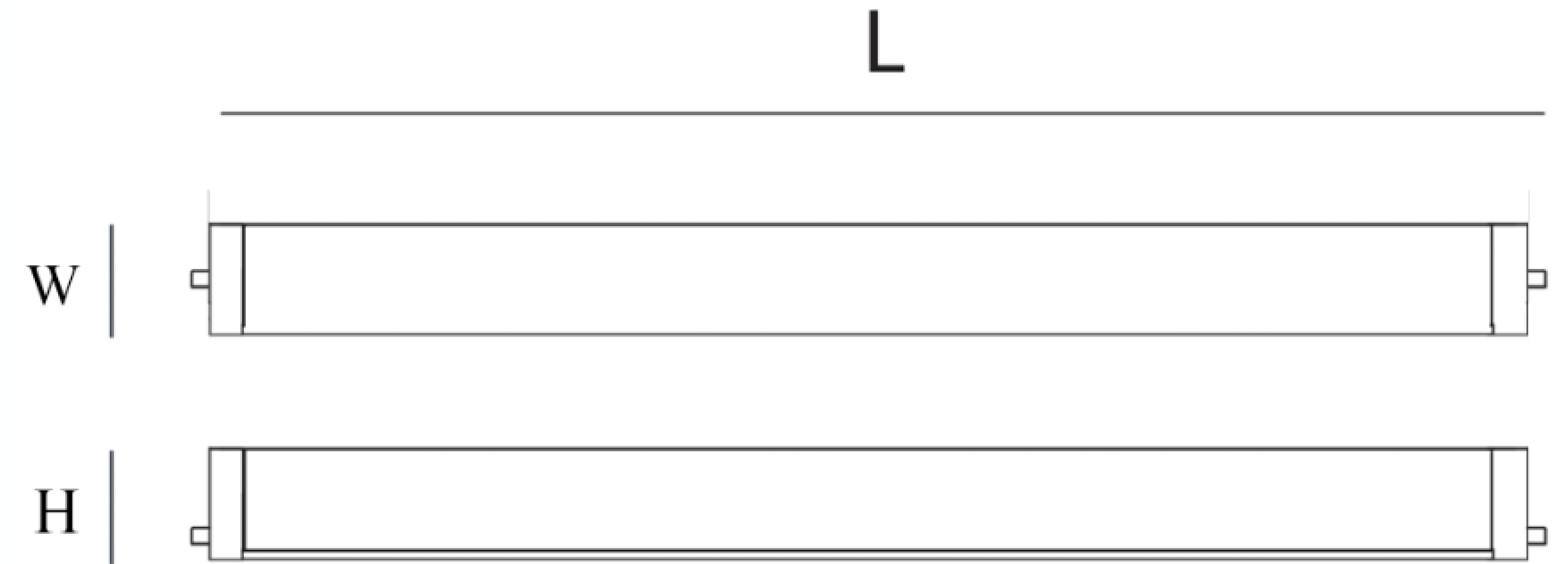
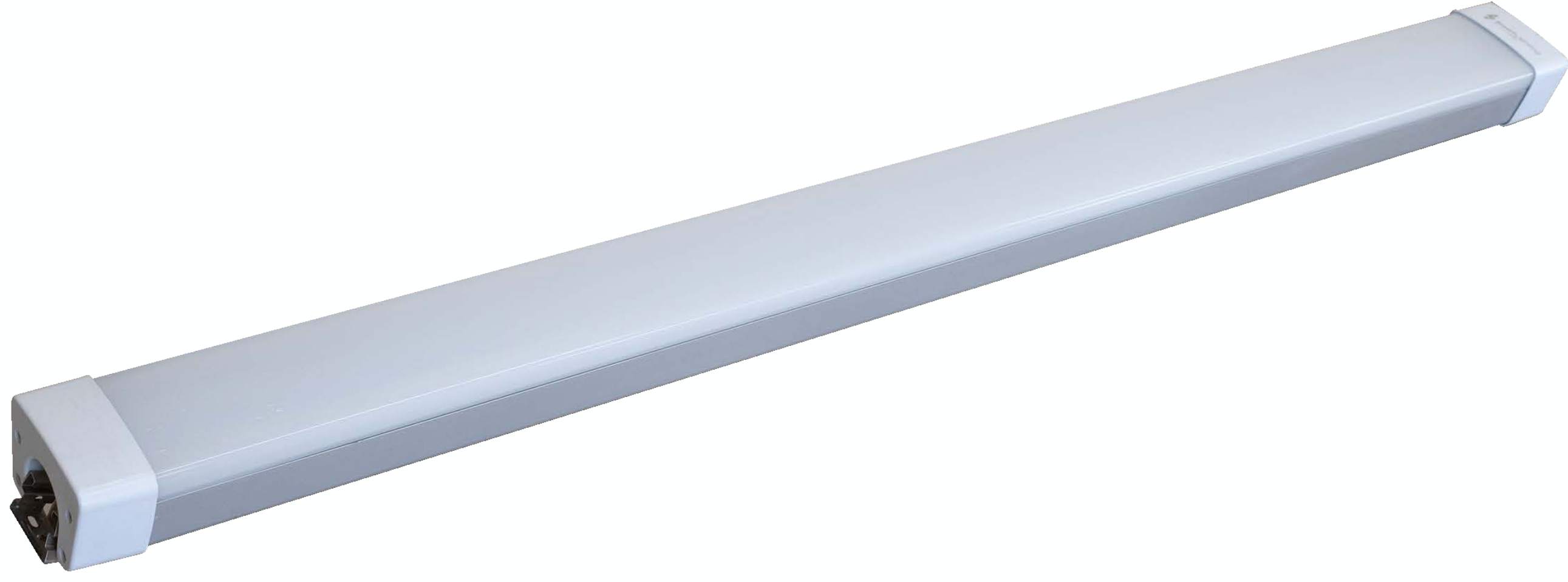
## MECHANICAL SPECIFICATIONS

**Material :** Polycarbonate-Aluminum  
**Mounting :** Wall - Surface Mounted  
**Lens :** PC  
**Finish :** White  
**Protection Class :** IP 65  
**Mechanical Resistance :** IK 08

## OPTICS



Code	Power W	Efficacy Lm/W	Colour Temp. K	Dimensions L×W×H mm	Driver	LED Chip	Weight Kg
1281XX8120LCXXX	50 60	110 130	3000 4000 6500	600×90×70 mm	CE Philips	Lumiled	1.080



## CUSTOMISZE OPTIONS

3K

Light  
Temperature  
3000K

4K

Light  
Temperature  
4000K

6.5K

Light  
Temperature  
6500K

CRI  
>80

Color  
Rendering  
Index >80

DALI

IK10

## POLAR CURVE

