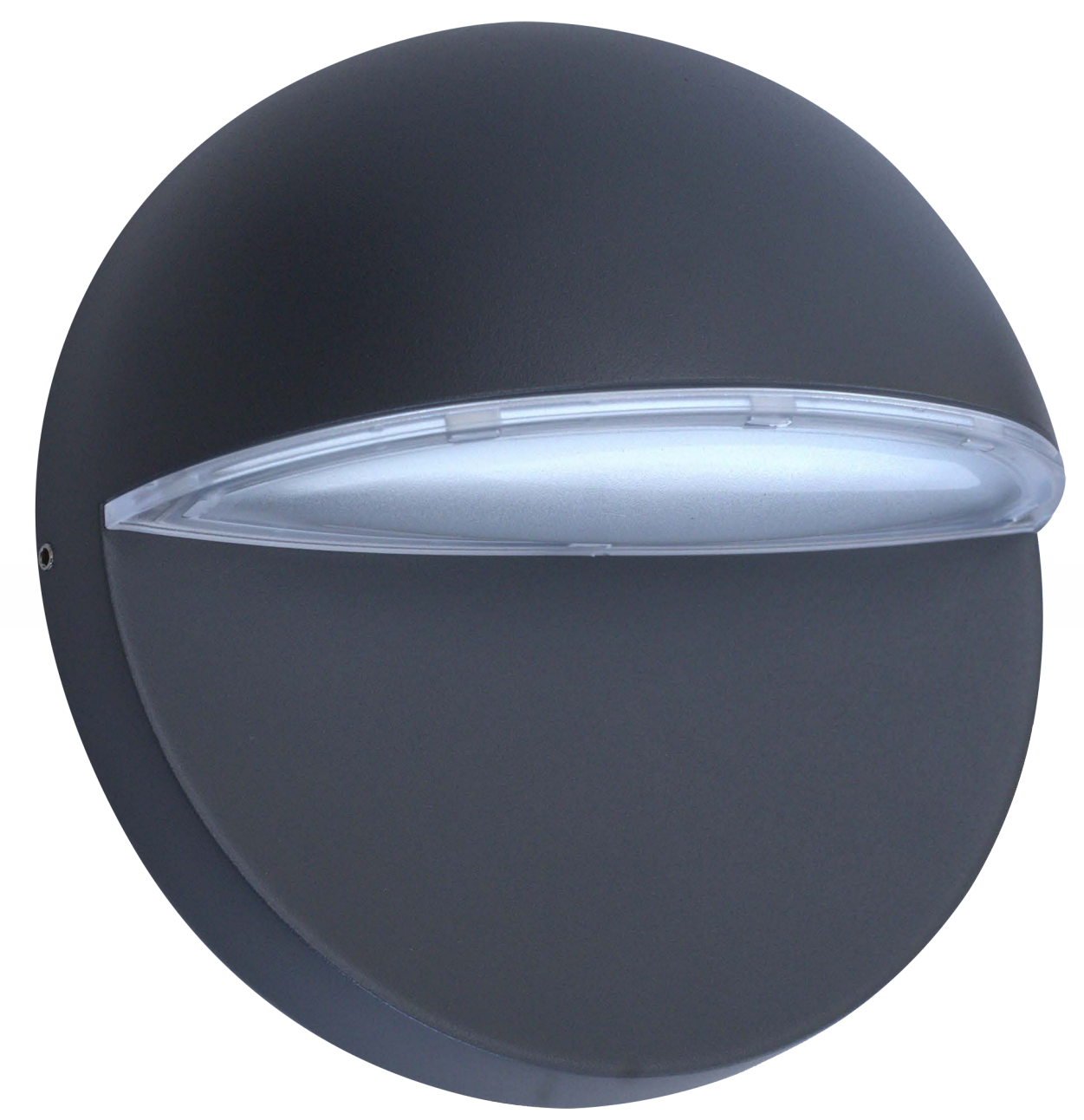


Step light

SLT-6706



PERFORMANCE DATA

Efficacy : 49.9 Lm/W

Input Voltage : 110-240V

Frequency : 50Hz

Color Rendering : CRI 80

Color Temperature : 3000K

Life Time : 50.000 hrs

Optic : 110°

Class : I

MECHANICAL SPECIFICATIONS

Material : Die-casting Aluminum body

Mounting : Wall recessed light

Lens : Clear PC lens

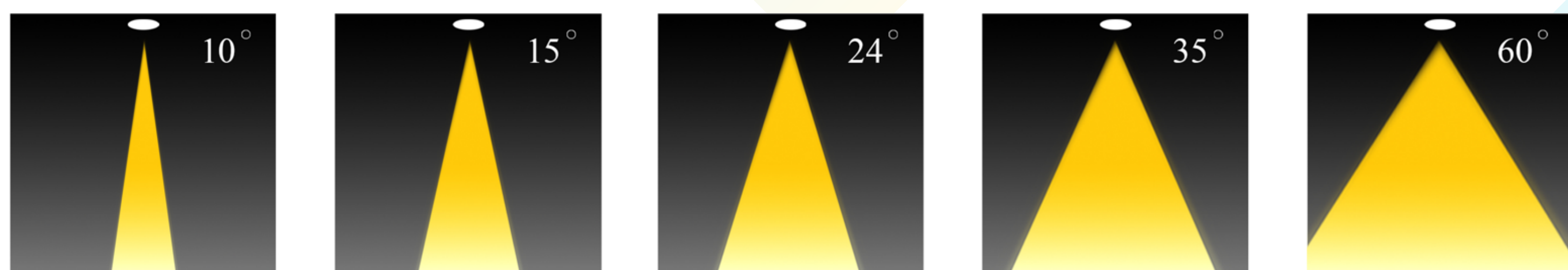
Finish : Gray RAL 7016

Protection Class : IP 54

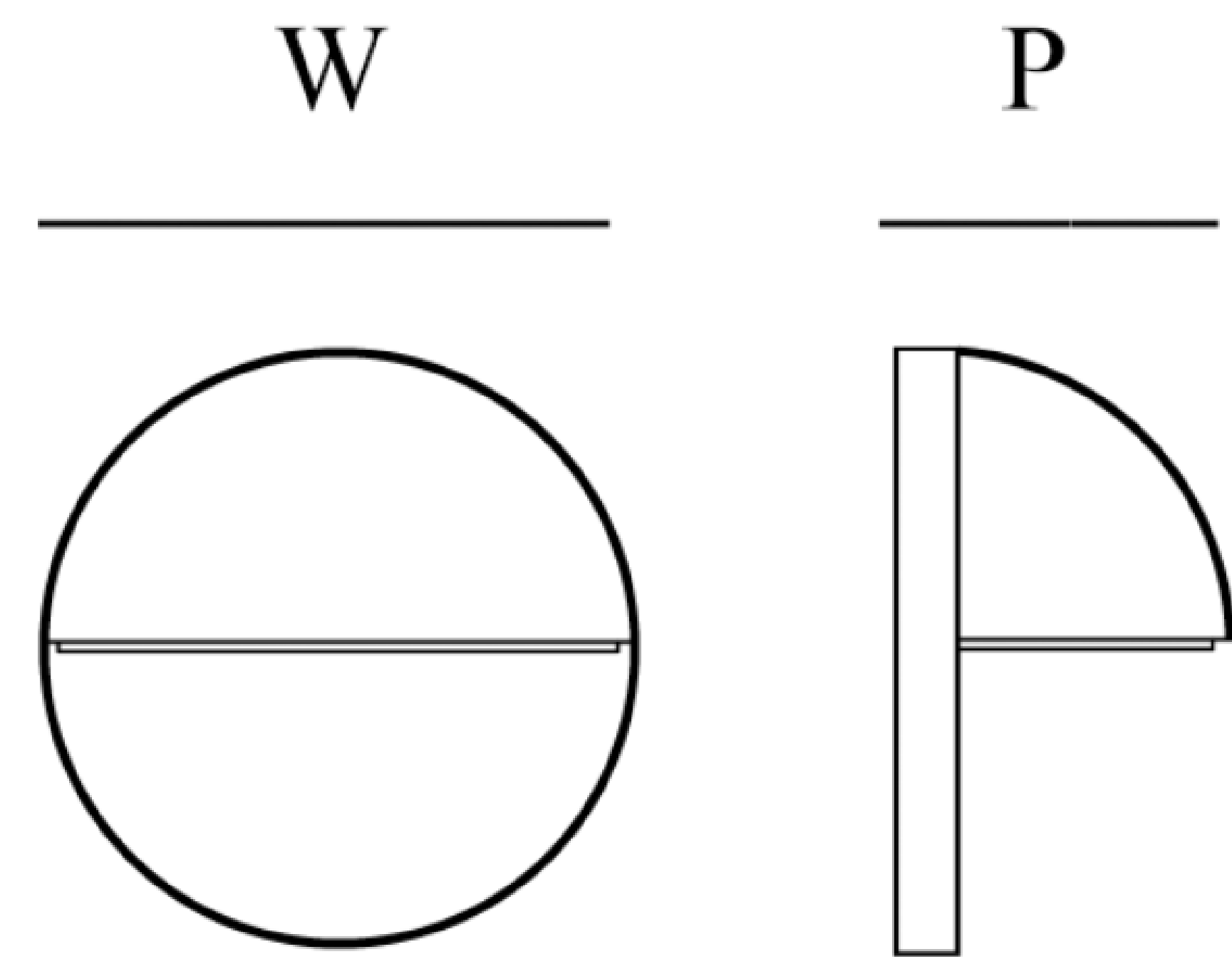
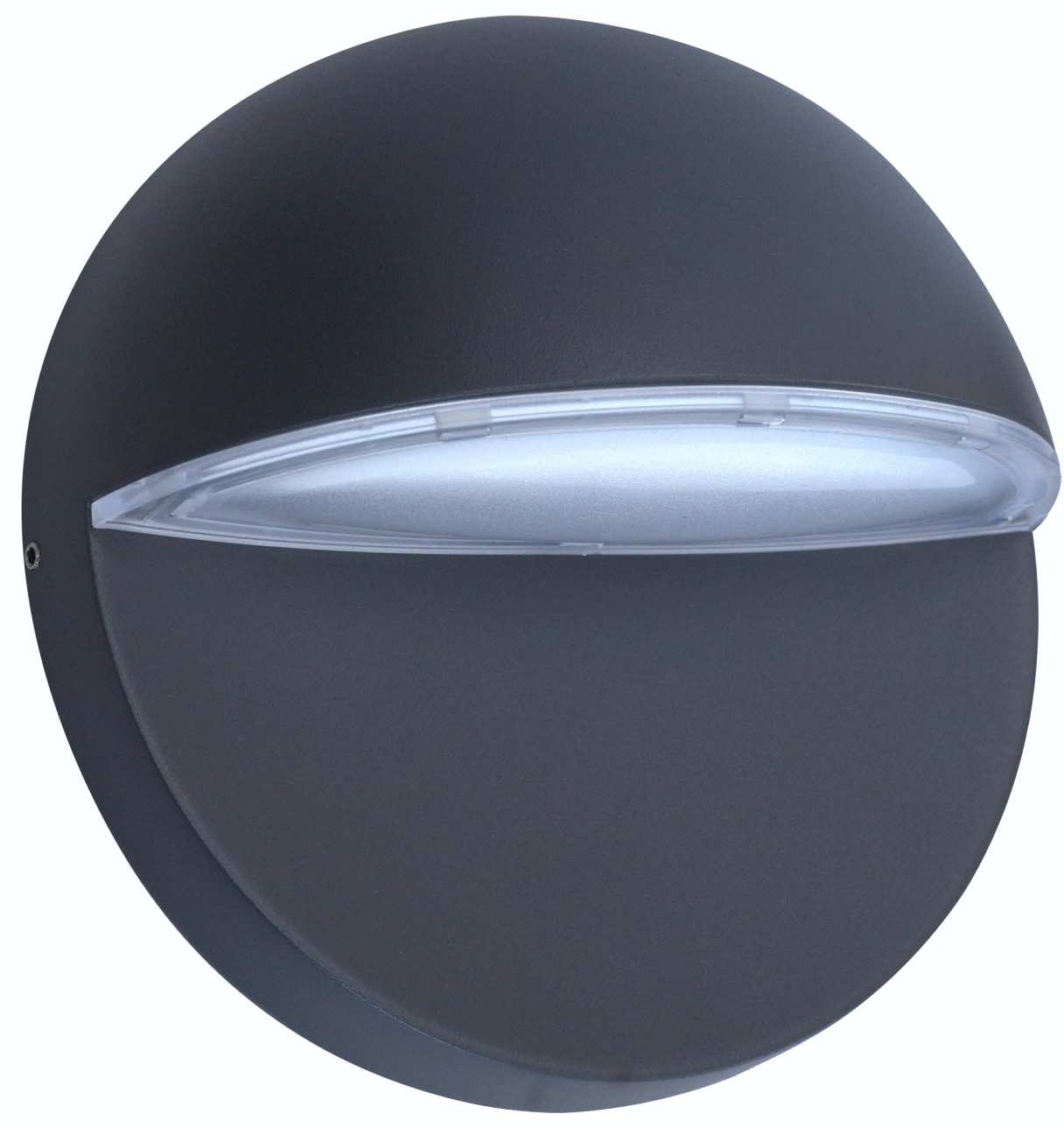
Mechanical Resistance : IK 08



OPTICS



Code	Power W	Efficacy Lm/W	Colour Temp. K	Dimensions WxP mm	Driver	LED Chip	Weight Kg
670633X110MD010	10	49.9	3000	190x82.5 mm	Done	MTC	0.610



CUSTOMISZE OPTIONS

3K

Light
Temperature
3000K

4K

Light
Temperature
4000K

6.5K

Light
Temperature
6500K

CRI
>80

Color
Rendering
Index >80

DALI

IK10

POLAR CURVE

