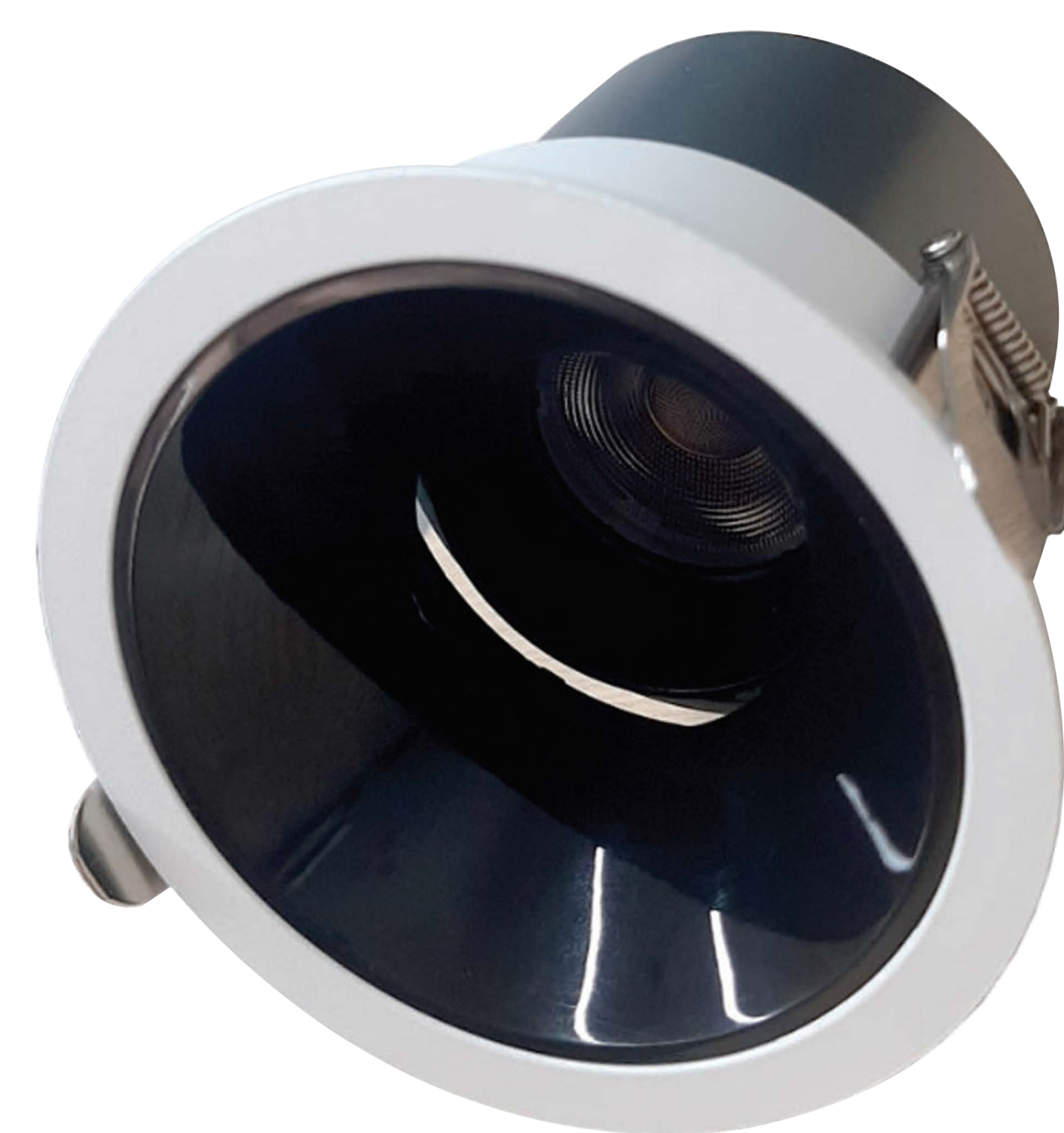


Downlight

SLT-8036



PERFORMANCE DATA

Efficacy : 130 Lm/W

Input Voltage : 220V

Frequency : 50-60Hz

Color Rendering : CRI 80

Color Temperature : 4000K

Life Time : 50.000 hrs

Optic : 24°

Class : II

CutOut : 55-75-90 mm

MECHANICAL SPECIFICATIONS

Material : Die Cast Aluminium

Mounting : Recessed mounted

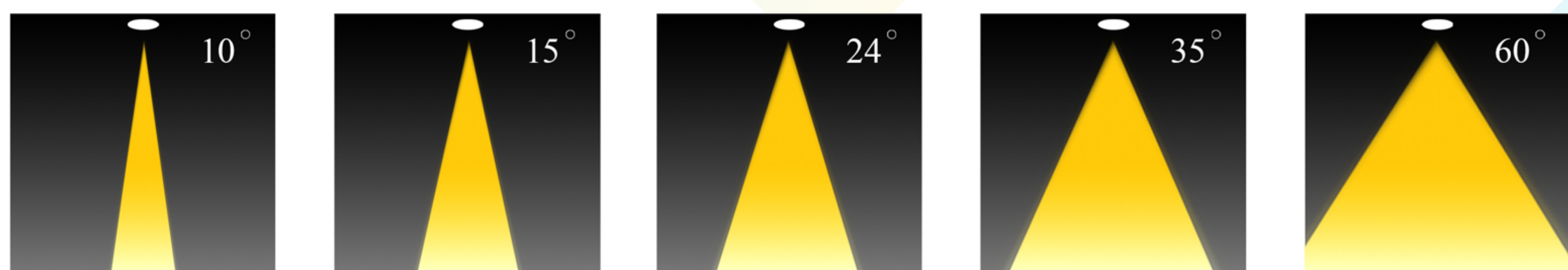
Lens : Glass

Finish : White

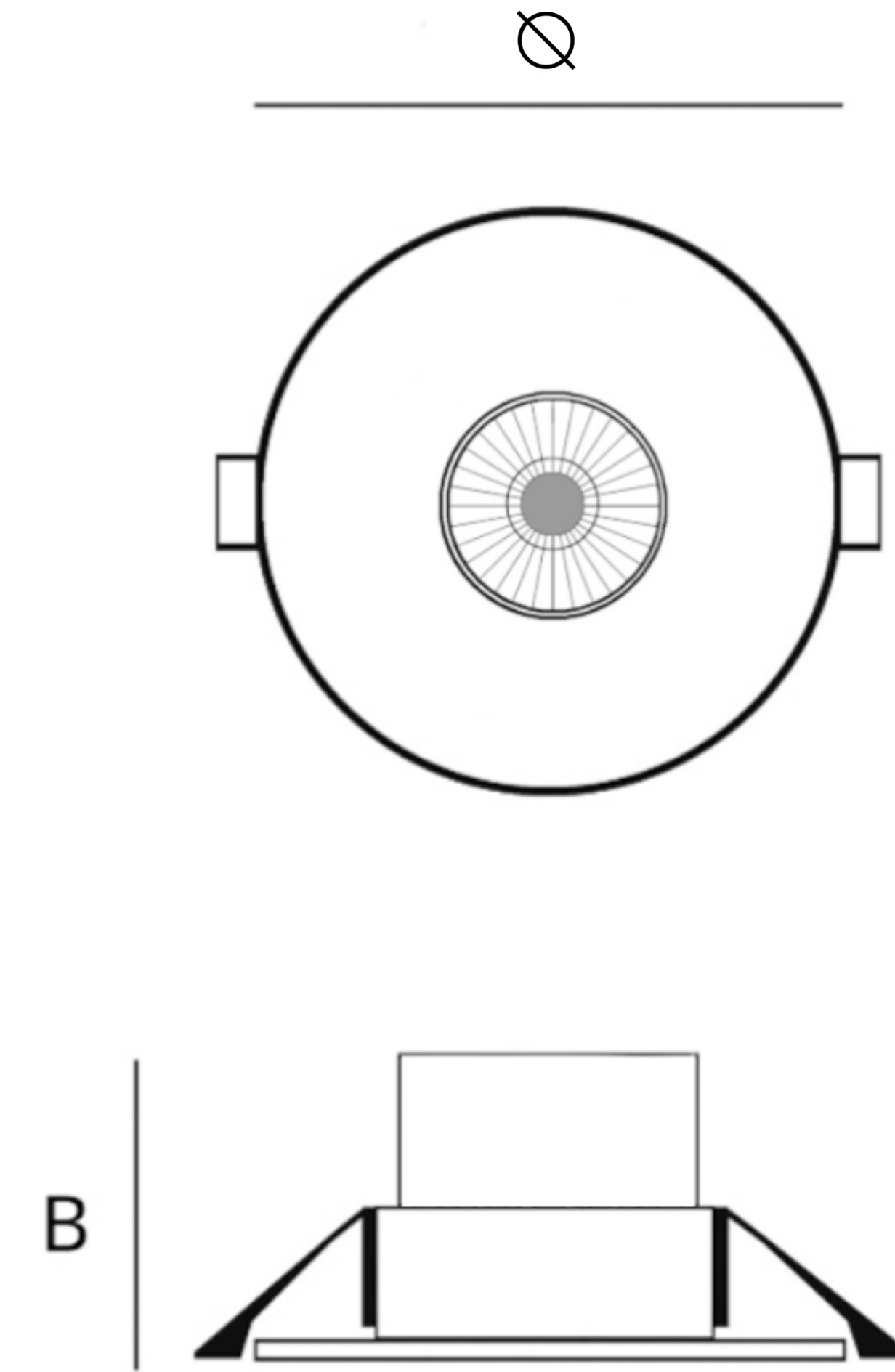
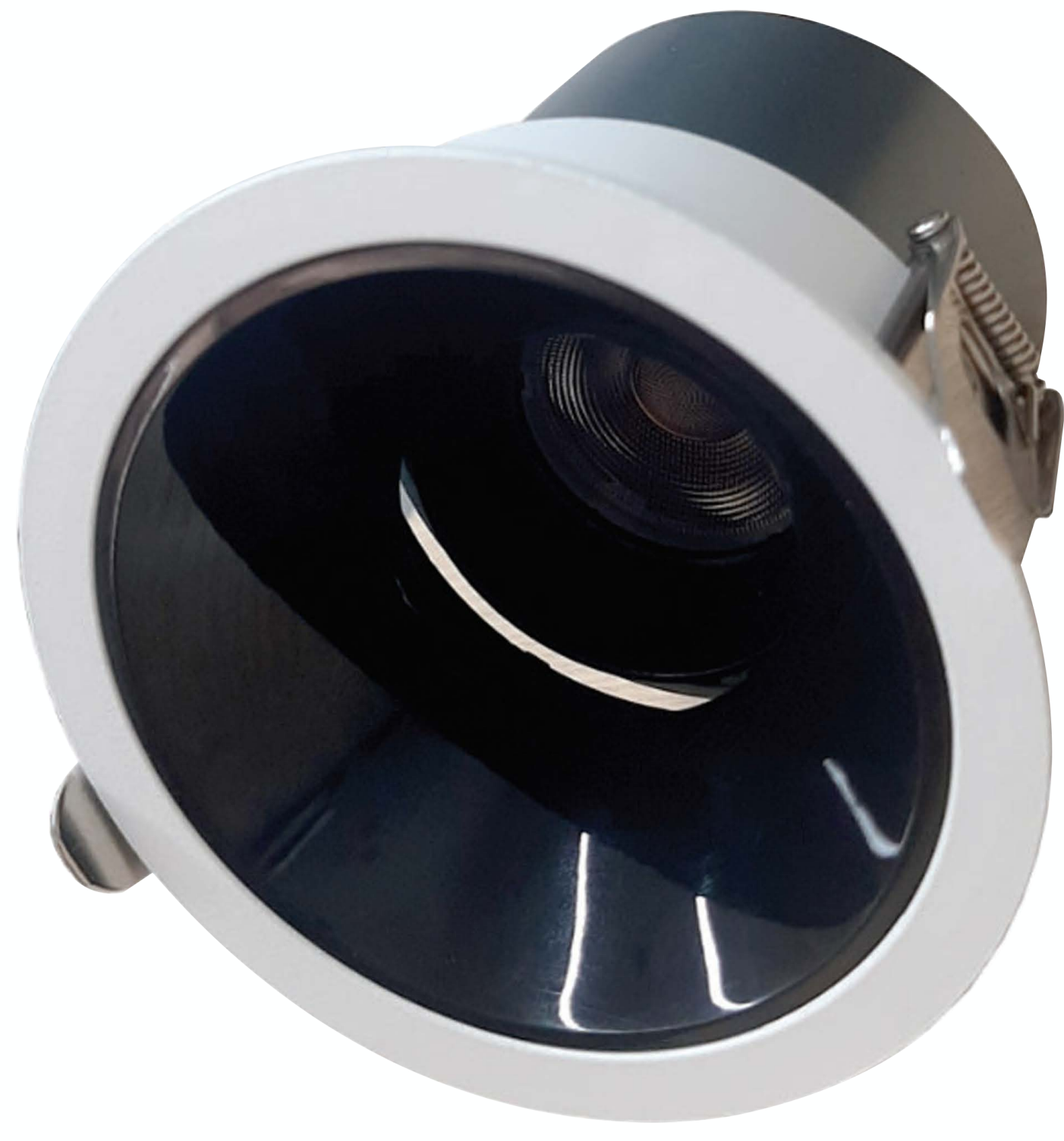
Protection Class : IP 20

Mechanical Resistance : IK

OPTICS



Code	Power W	Efficacy Lm/W	Colour Temp. K	Dimensions ∅×B mm	Driver	LED Chip	Weight Kg
80361408024CEXXX	7		4000	60×75 mm	Eaglerise	Cree	0.160
	10			85×85 mm			0.240
	15			105×105 mm			0.390



CUSTOMISZE OPTIONS

3K

Light
Temperature
3000K

4K

Light
Temperature
4000K

6.5K

Light
Temperature
6500K

CRI
>80

Color
Rendering
Index >80

DALI

IK10

POLAR CURVE

