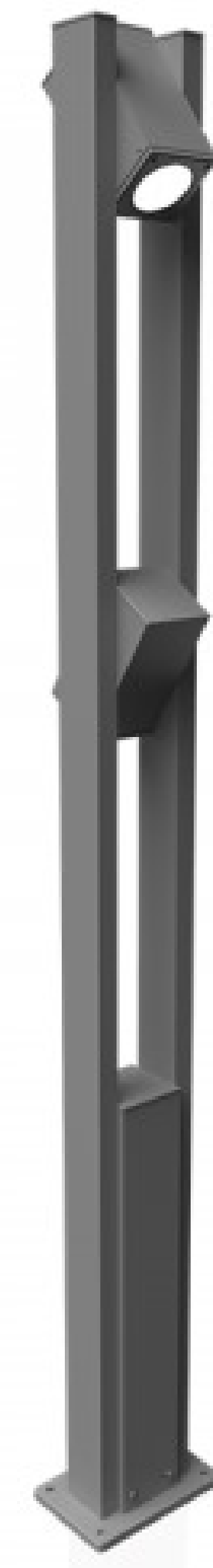


# Pole Light

SLT-DP11



## PERFORMANCE DATA

**Efficacy :** 110 Lm/W

**Input Voltage :** 220-240 V

**Frequency :** 50 Hz

**Color Rendering :** CRI 80

**Color Temperature :** 3000K

**Life Time :** 50.000 hrs

**Optic :** 45°

**Class :** I

## MECHANICAL SPECIFICATIONS

**Material :** Aluminum

**Mounting :** Pole Mounted

**Lens :** Glass

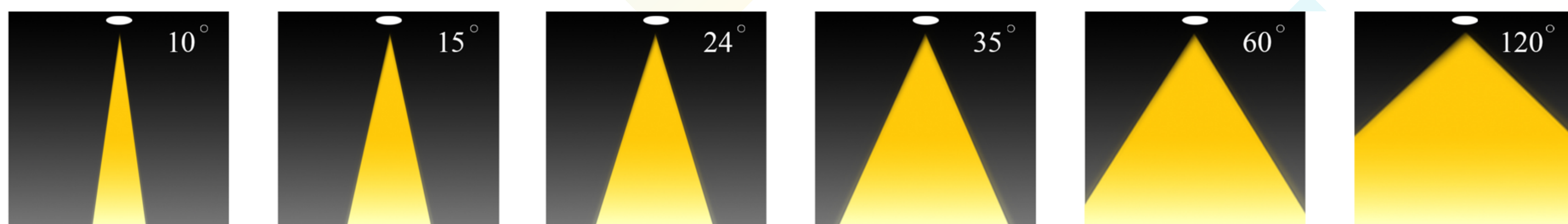
**Finish :** Black

**Protection Class :** IP 65

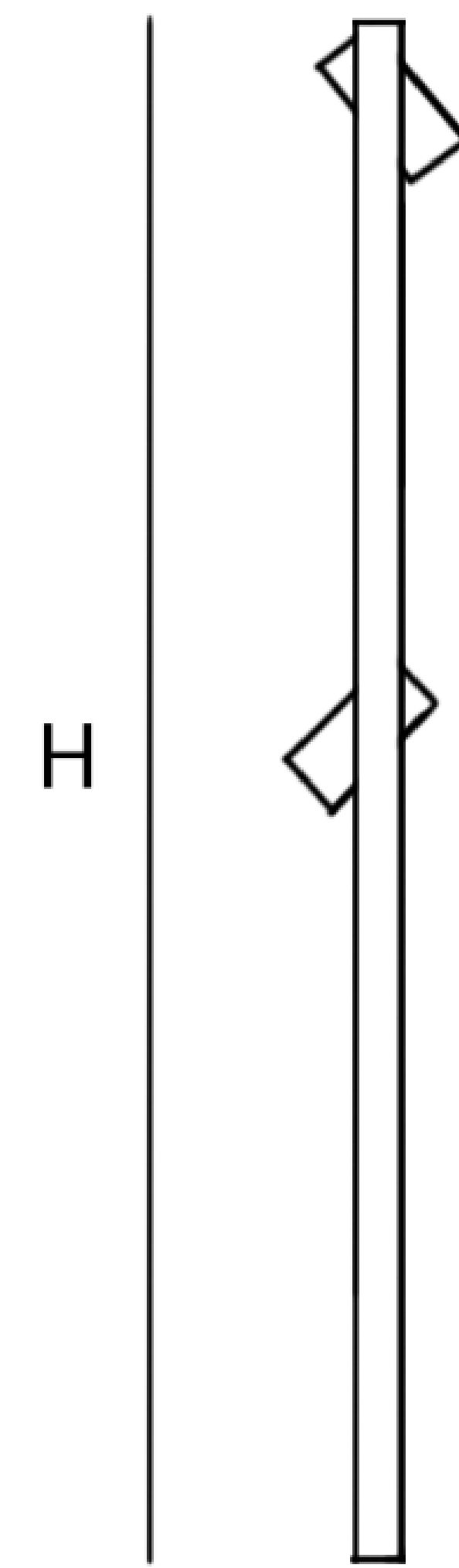
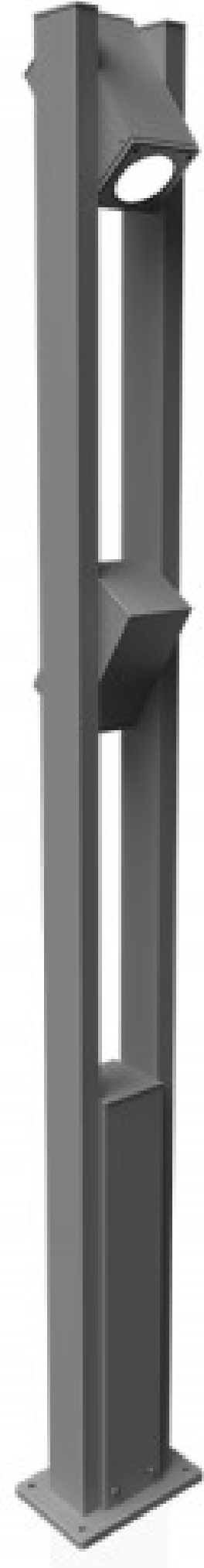
**Mechanical Resistance :** IK 08



## OPTICS



Code	Power W	Efficacy Lm/W	Colour Temp. K	Dimensions H mm	Driver	LED Chip
DP113308120XX2253400	2*25	110	3000	3400	Philips Eaglerise	VS Bridgelux



## CUSTOMISZE OPTIONS

3K

Light  
Temperature  
3000K

4K

Light  
Temperature  
4000K

6.5K

Light  
Temperature  
6500K

CRI  
>80

Color  
Rendering  
Index >80

FINISH

Black

DALI

## POLAR CURVE

