

Up & Down

UD-E27



PERFORMANCE DATA

Efficacy : 90 Lm/W

Input Voltage : 110-240V

Frequency : 50Hz

Color Rendering : CRI 80

Color Temperature : 3000K

Life Time : 15,000 hrs

Optic : 120°

Class : I

MECHANICAL SPECIFICATIONS

Material : Die-casting Aluminium and extruded Aluminium body

Mounting : Wall light, up and down version

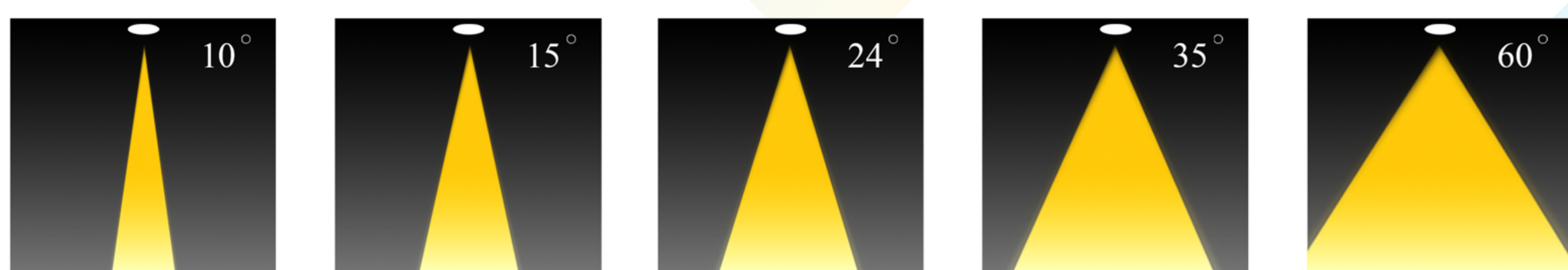
Lens : Clear Glass

Finish : Gray RAL 7016

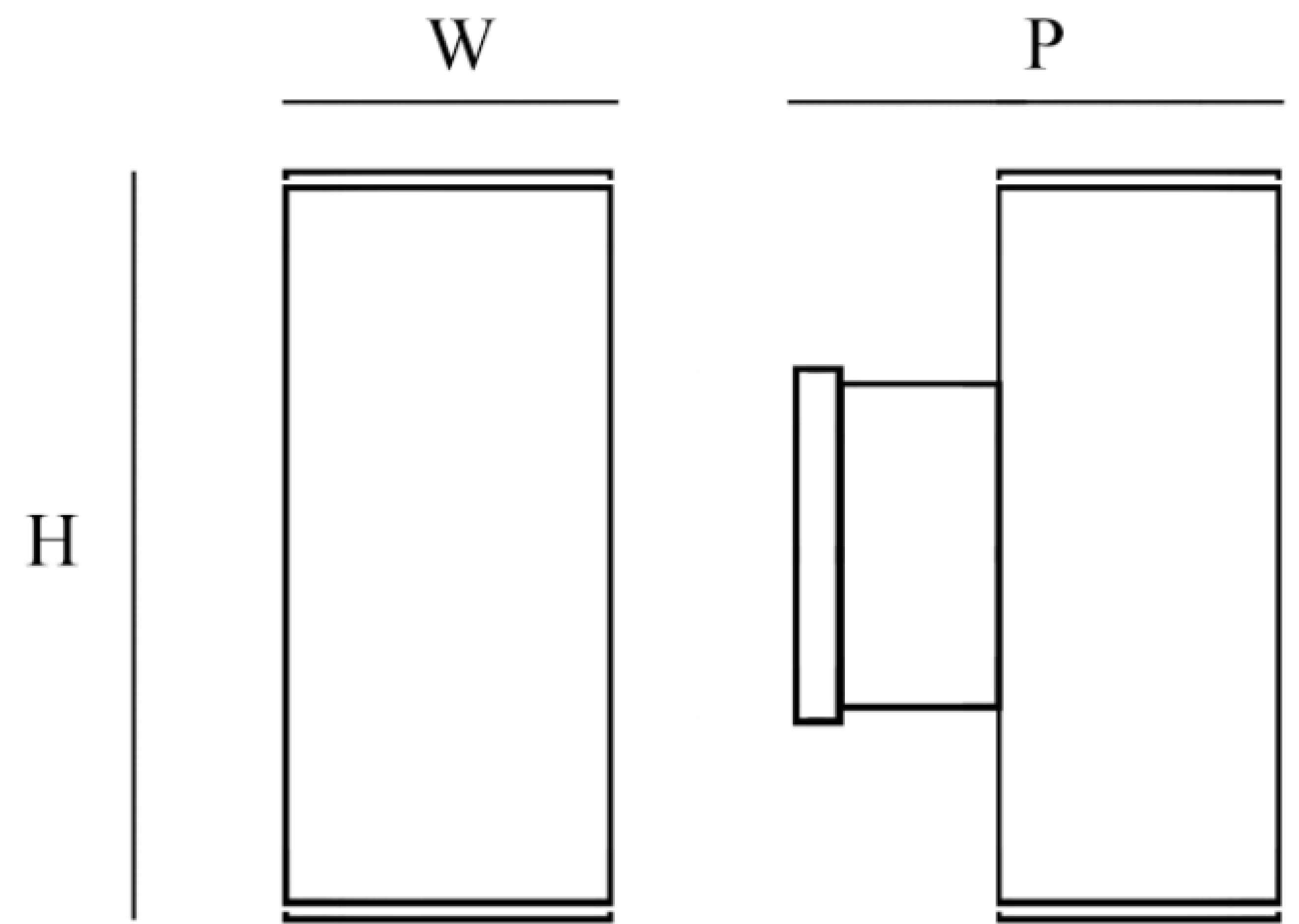
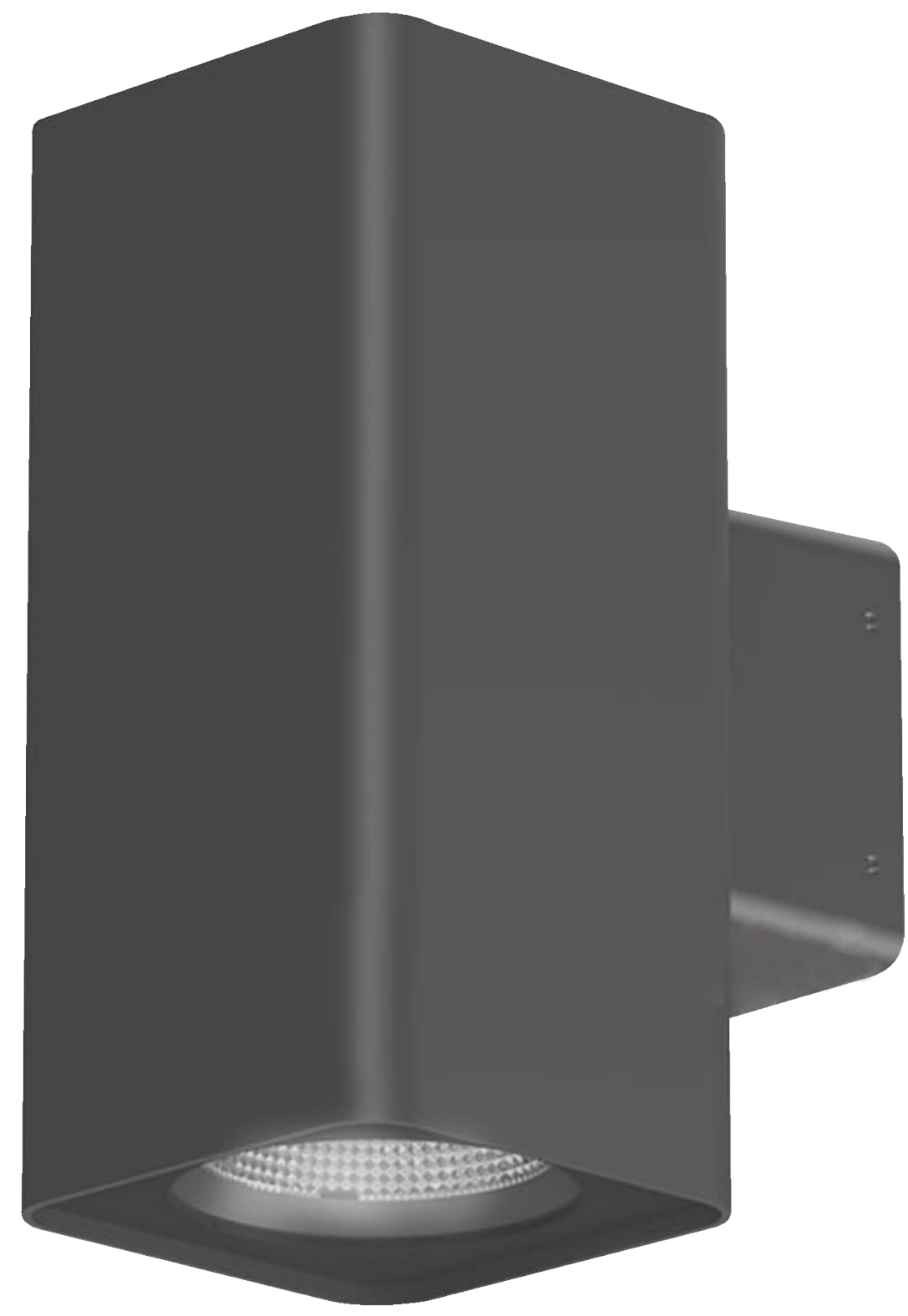
Protection Class : IP 65

Mechanical resistance : IK 08

OPTICS



Code	Power W	Efficacy Lm/W	Colour Temp. K	Dimensions WxPxH mm	Driver	Lamp Base	Weight Kg
UD201	9 12 15	90	3000 4000 6000	120x146.5x300 mm	N/A	E27	1.510



CUSTOMISZE OPTIONS

3K

Light
Temperature
3000K

4K

Light
Temperature
4000K

6.5K

Light
Temperature
6500K

CRI
>80

Color
Rendering
Index >80

IK10

POLAR CURVE

