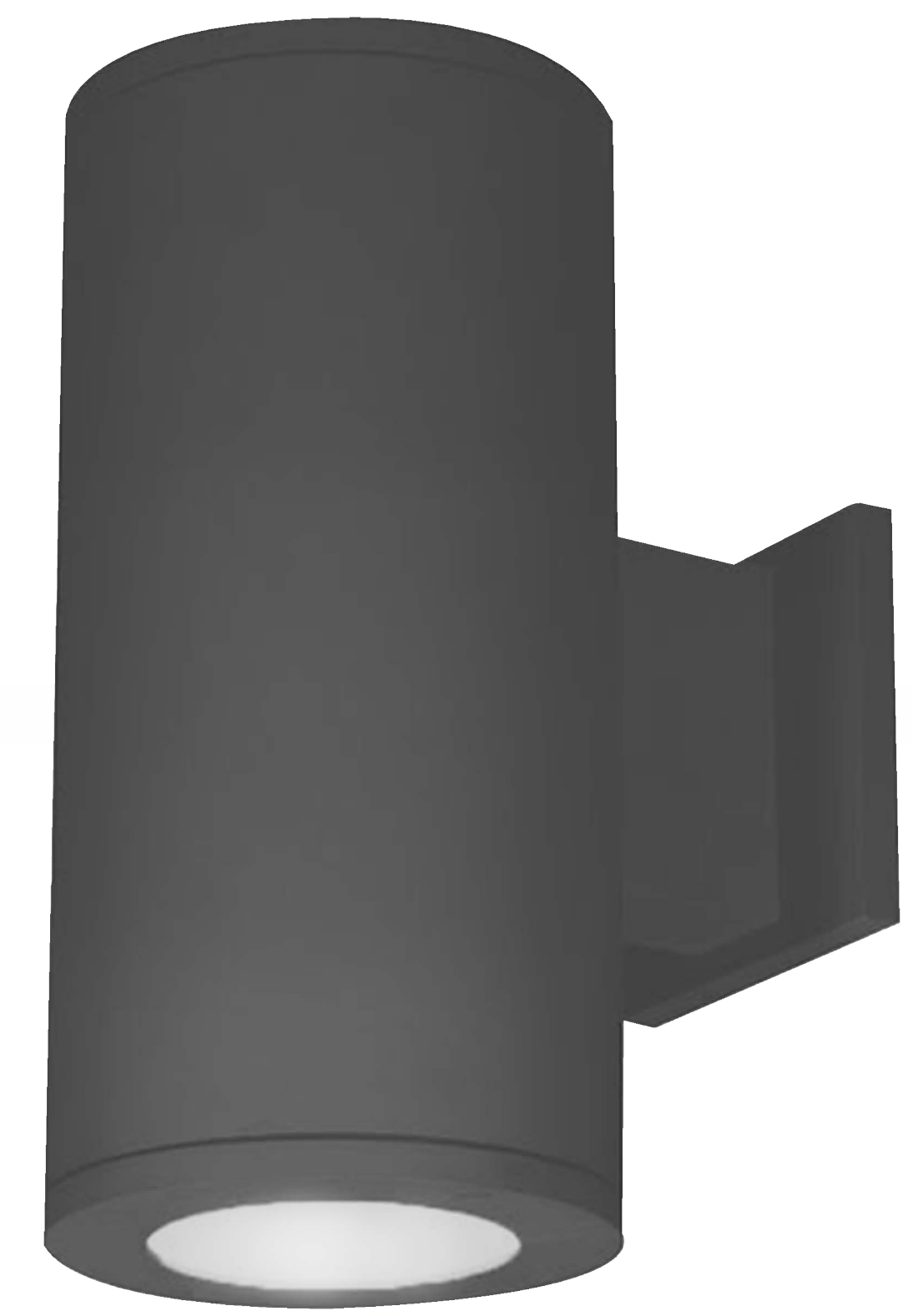


Up & Down

UD04



PERFORMANCE DATA

Efficacy : 77.6 Lm/W

Input Voltage : 110-240V

Frequency : 50Hz

Color Rendering : CRI 80

Color Temperature : 3000K

Life Time : 50,000 hrs

Opic : 36°

Class : I

MECHANICAL SPECIFICATIONS

Material : Die-casting Aluminum and extruded Aluminum body

Mounting : Wall light, up and down version

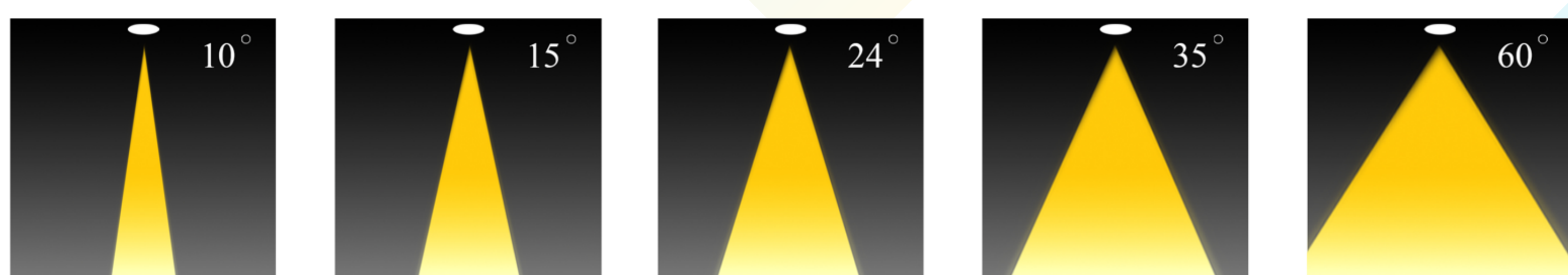
Lens : Clear Glass

Finish : Gray RAL 7016

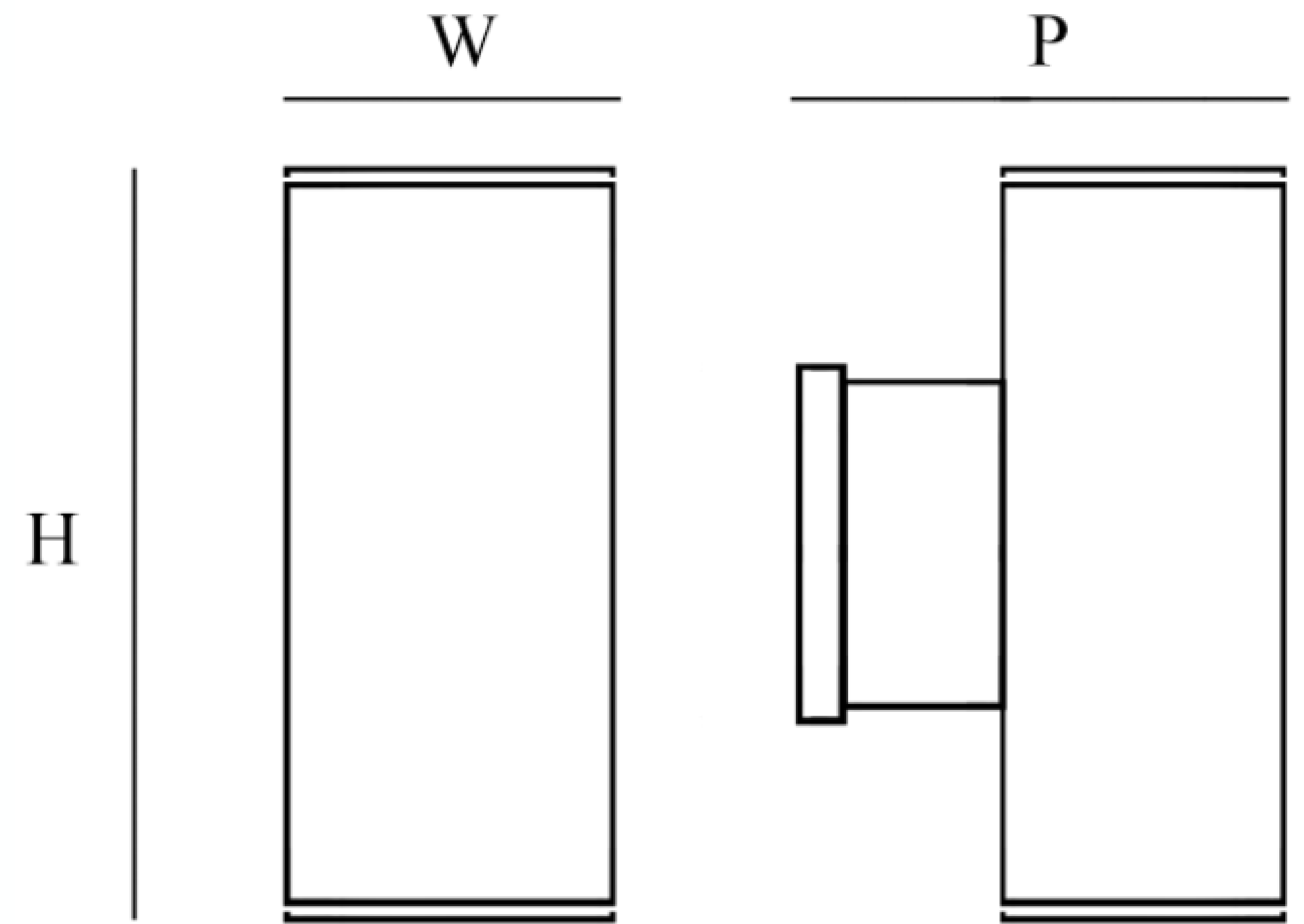
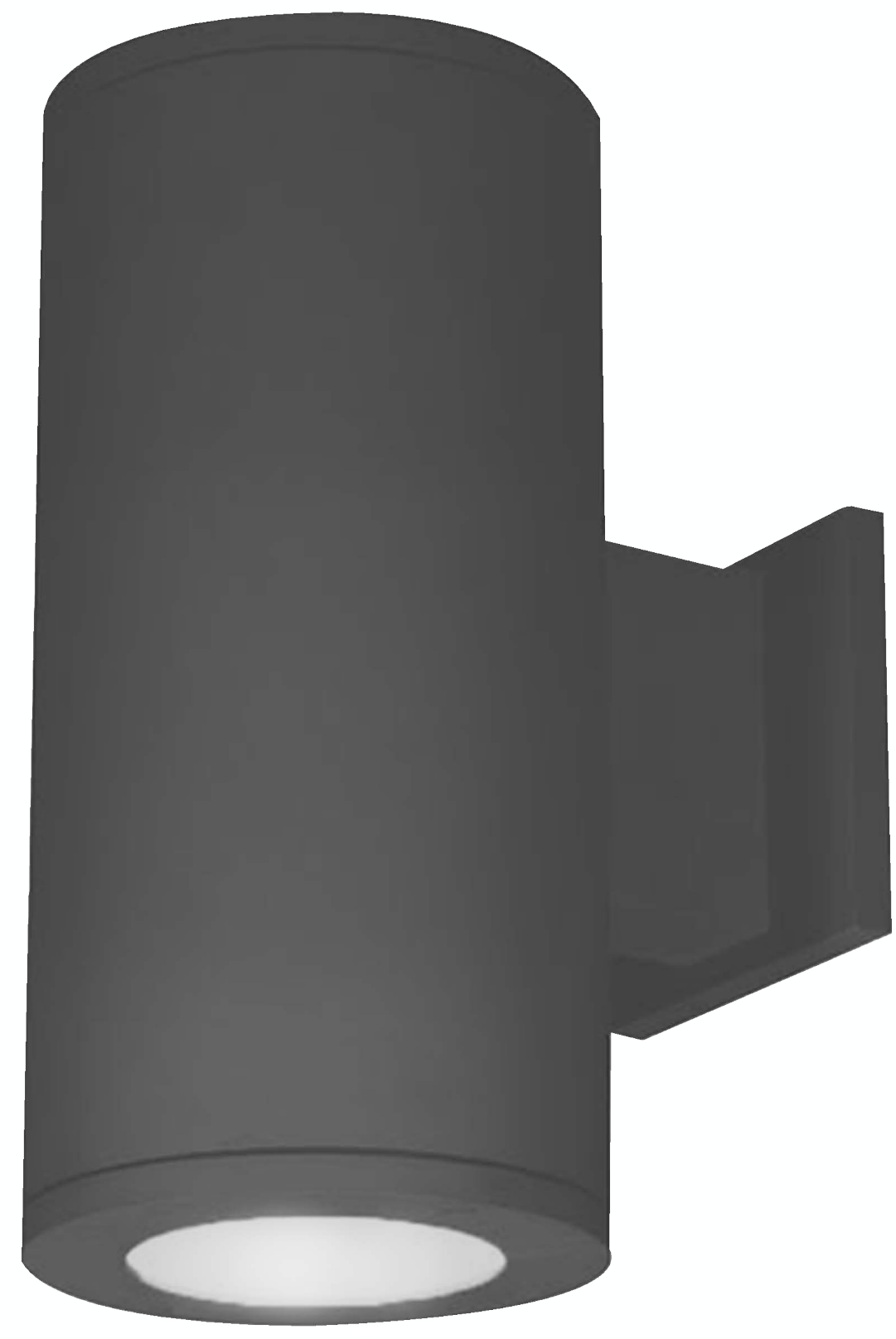
Protection Class : IP 65

Mechanical resistance : IK 08

OPTICS



Code	Power W	Efficacy Lm/W	Colour Temp. K	Dimensions WxPxH mm	Driver	LED Chip	Weight Kg
UD04330X036CX030	2x15	77.6	3000	120x164.5x300 mm	Tridonic Done	Cree	1.865



CUSTOMISZE OPTIONS

3K

Light
Temperature
3000K

4K

Light
Temperature
4000K

6.5K

Light
Temperature
6500K

CRI
>80

Color
Rendering
Index >80

DALI

IK10

POLAR CURVE

