

Up & Down

UD05



PERFORMANCE DATA

Efficacy : 77.6 Lm/W

Input Voltage : 110-240V

Frequency : 50-60 Hz

Color Rendering : CRI 80

Color Temperature : 3000K

Life Time : 50,000 hrs

Optic : 36°

Class : I

MECHANICAL SPECIFICATIONS

Material : Die-casting Aluminum and extruded Aluminum body

Mounting : Surface/Wall Mounted

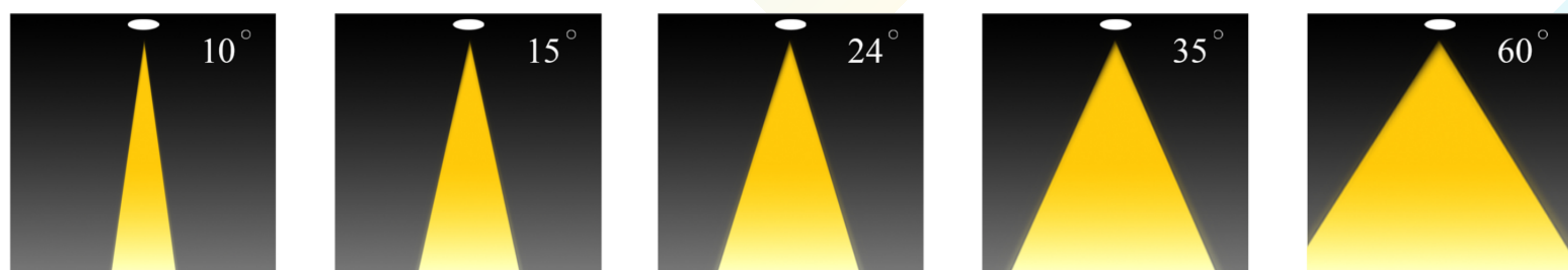
Lens : Clear glass

Finish : Black

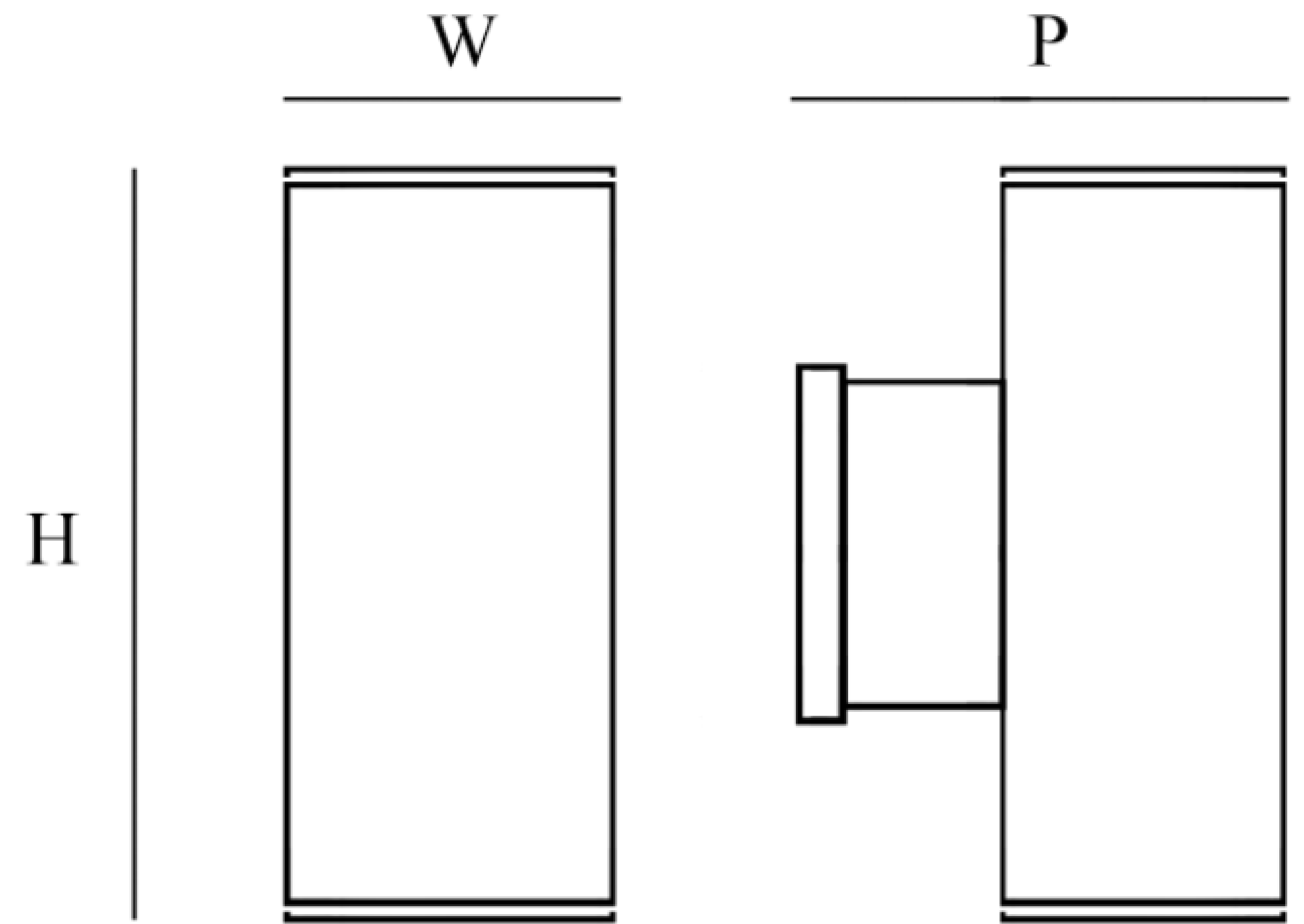
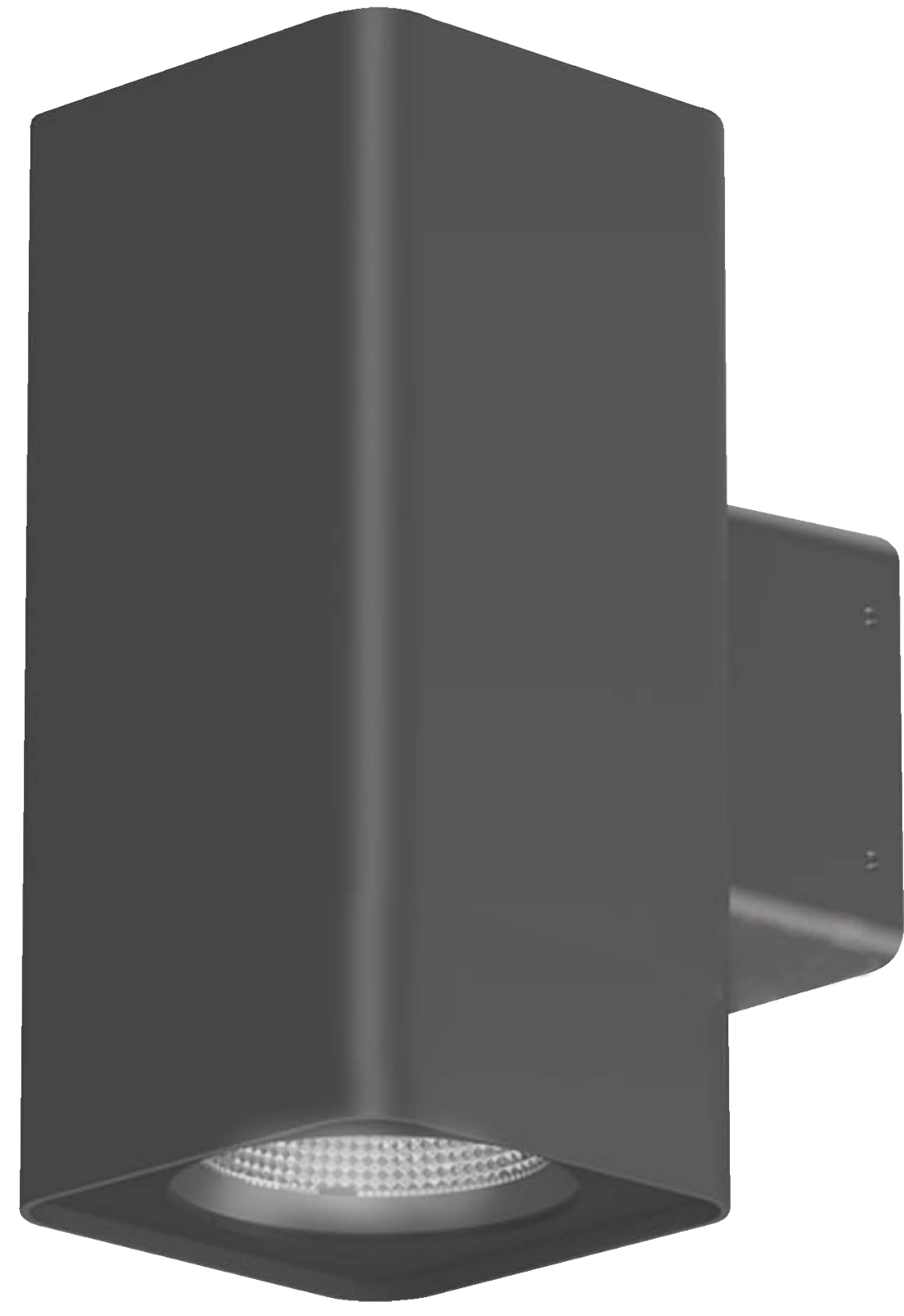
Protection Class : IP 65

Mechanical resistance : IK 08

OPTICS



Code	Power W	Efficacy Lm/W	Colour Temp. K	Dimensions WxPxH mm	Driver	LED Chip	Weight Kg
UD05330X036CD030	2*15	77.6	3000	110x157x218 mm	Done	Cree	2.200



CUSTOMISZE OPTIONS

3K

Light
Temperature
3000K

4K

Light
Temperature
4000K

6.5K

Light
Temperature
6500K

CRI
>80

Color
Rendering
Index >80

DALI

IK10

POLAR CURVE

