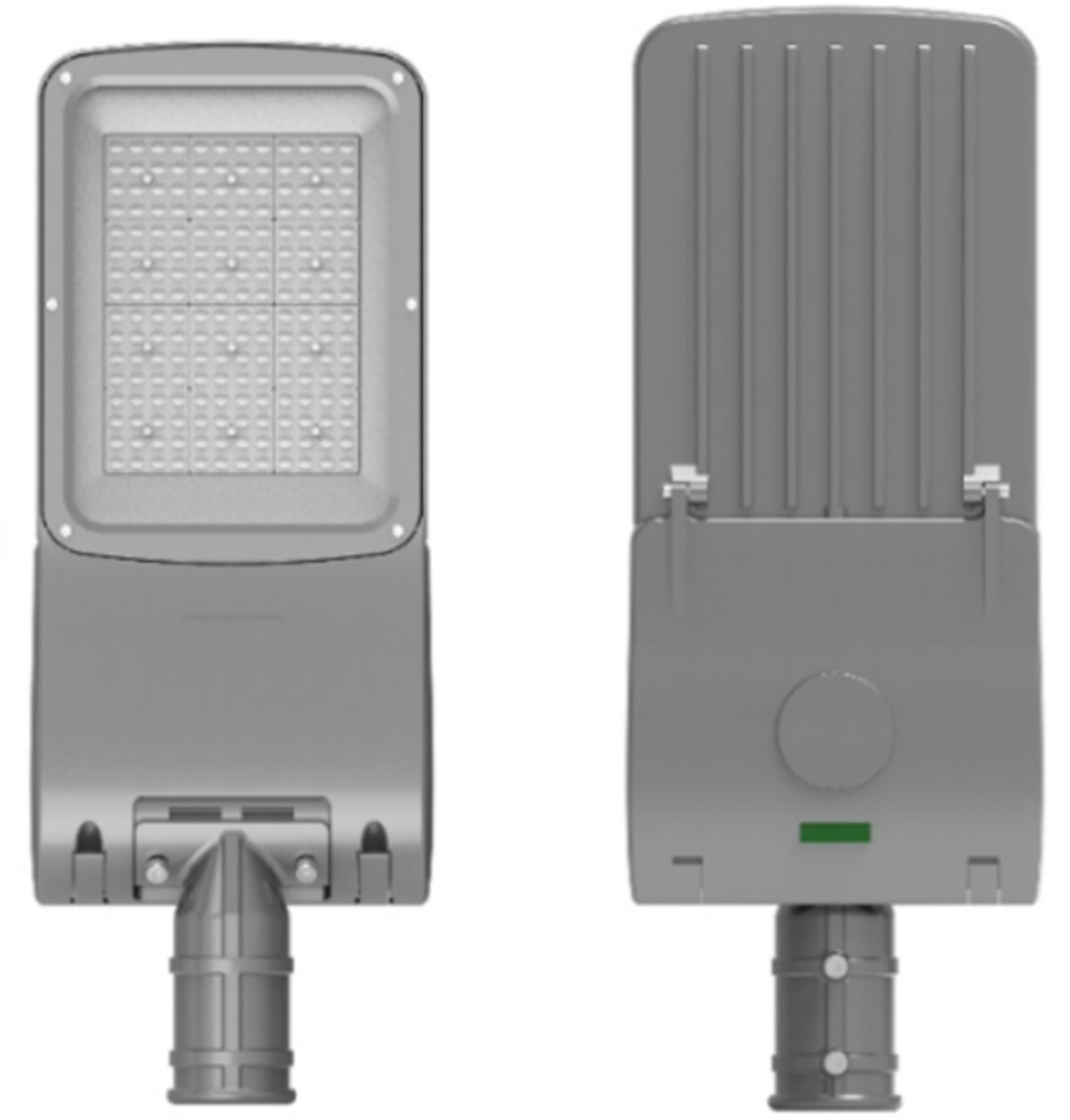


Street Light

SLT-9020



PERFORMANCE DATA

Efficacy : 150 Lm/W

Input Voltage : 85 - 650V AC

Frequency : 50-60Hz

Color Rendering : CRI 70

Color Temperature : 6500 K

Life Time : 50.000 hrs

Optic : 120 °

Class : II

MECHANICAL SPECIFICATIONS

Material : Die-casting aluminum

Mounting : Pole mounted

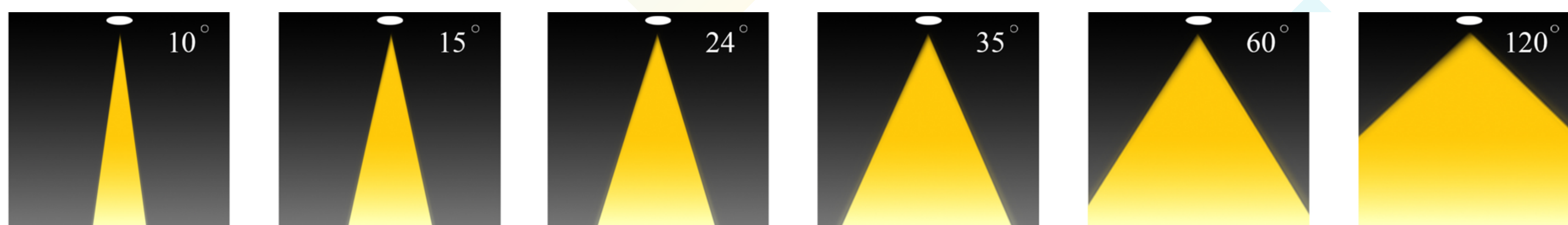
Lens : PMMA | PC

Finish : Gray (RAL 9002 | RAL7040)

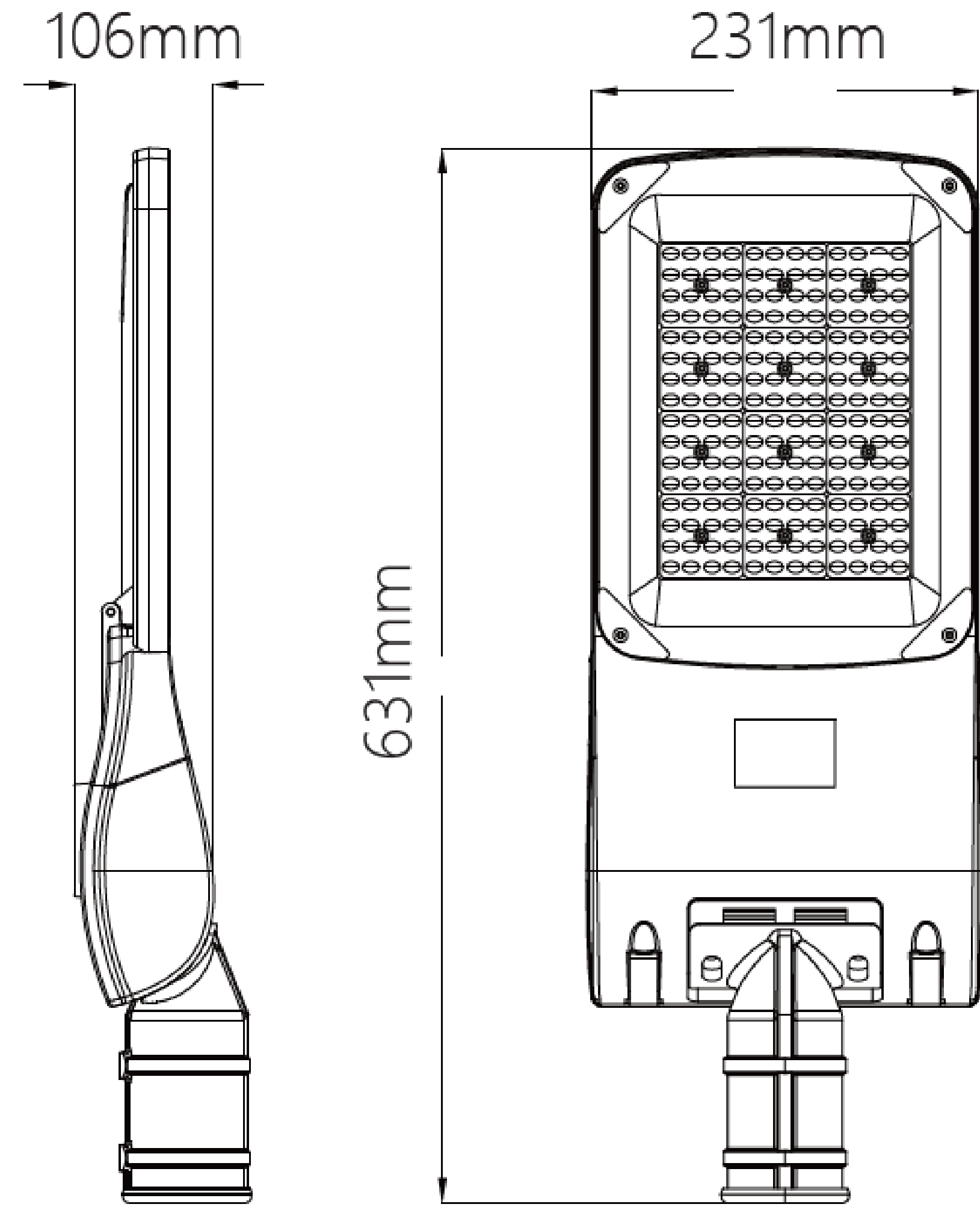
Protection Class : IP 65

Mechanical Resistance : IK 08

OPTICS



| Code | Power W | Efficacy Lm/W | Colour Temp. M | Dimensions AxBxC mm | Driver | LED Chip | Weight |
|------------------|------------|------------------|-------------------|------------------------|-----------------------|----------|--------|
| 90203658XXXLM150 | 150 | 150 | 6500 | 631×231×106 | Moso Philips CE | Lumiled | |



CUSTOMISZE OPTIONS

3K

Light
Temperature
3000K

4K

Light
Temperature
4000K

6.5K

Light
Temperature
6500K

CRI
>80

Color
Rendering
Index >80

DALI

IK10

POLAR CURVE

