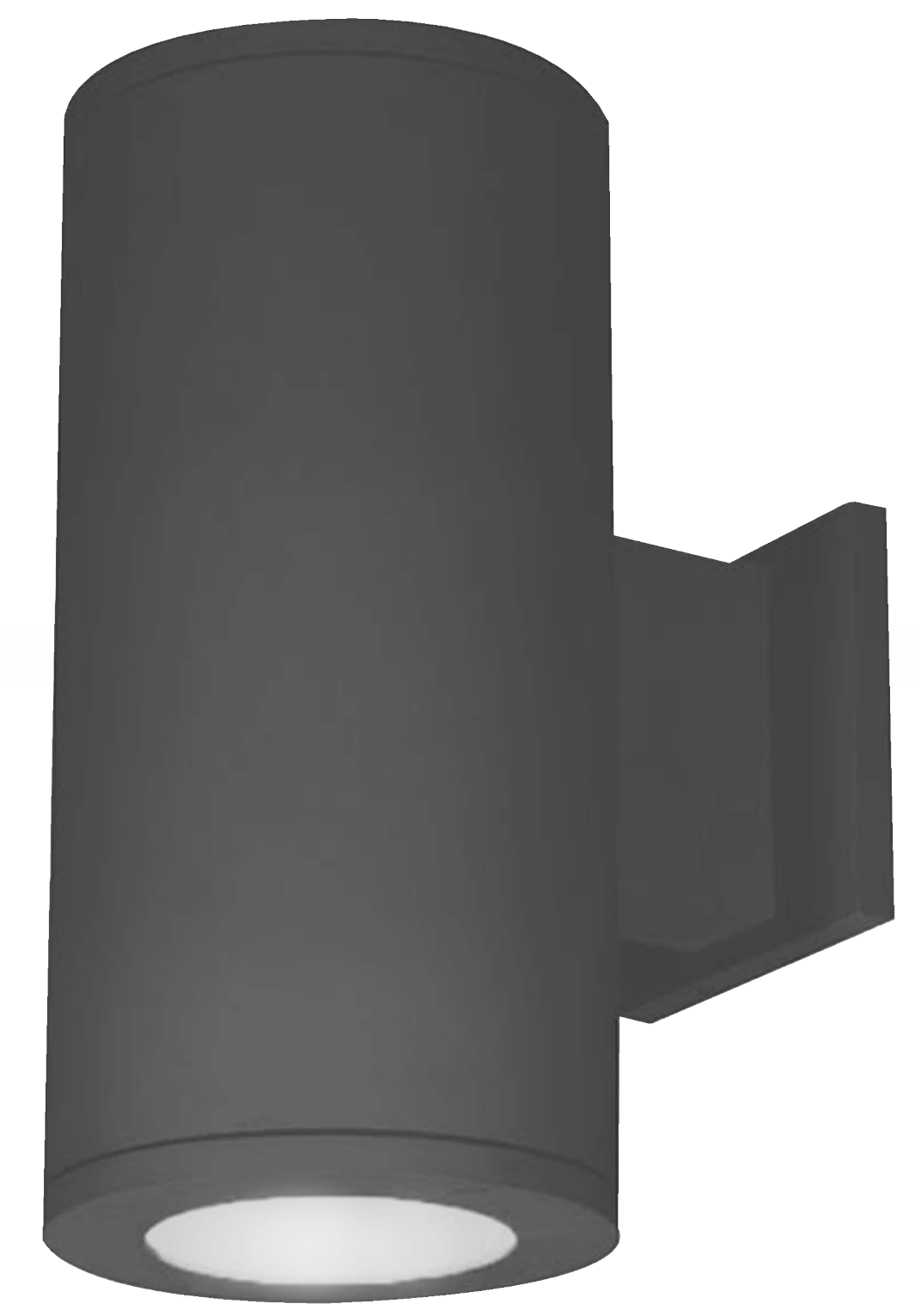


Wall Decortive

SLT-1125



PERFORMANCE DATA

Efficacy : 90 Lm/W

Input Voltage : 110-240V

Frequency : 50Hz

Color Rendering : CRI 80

Color Temperature : 3000K

Life Time : 15,000-25,000 hrs

Optic : 120 °

Class : I

MECHANICAL SPECIFICATIONS

Material : Die-casting Aluminum and extruded Aluminum body

Mounting : Wall mounted

Lens : Clear Glass

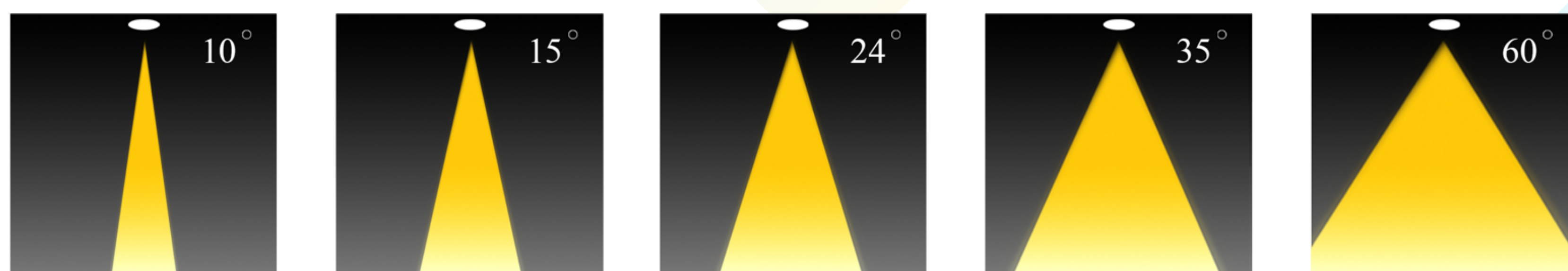
Finish : Gray RAL 7016

Protection Class : IP 65

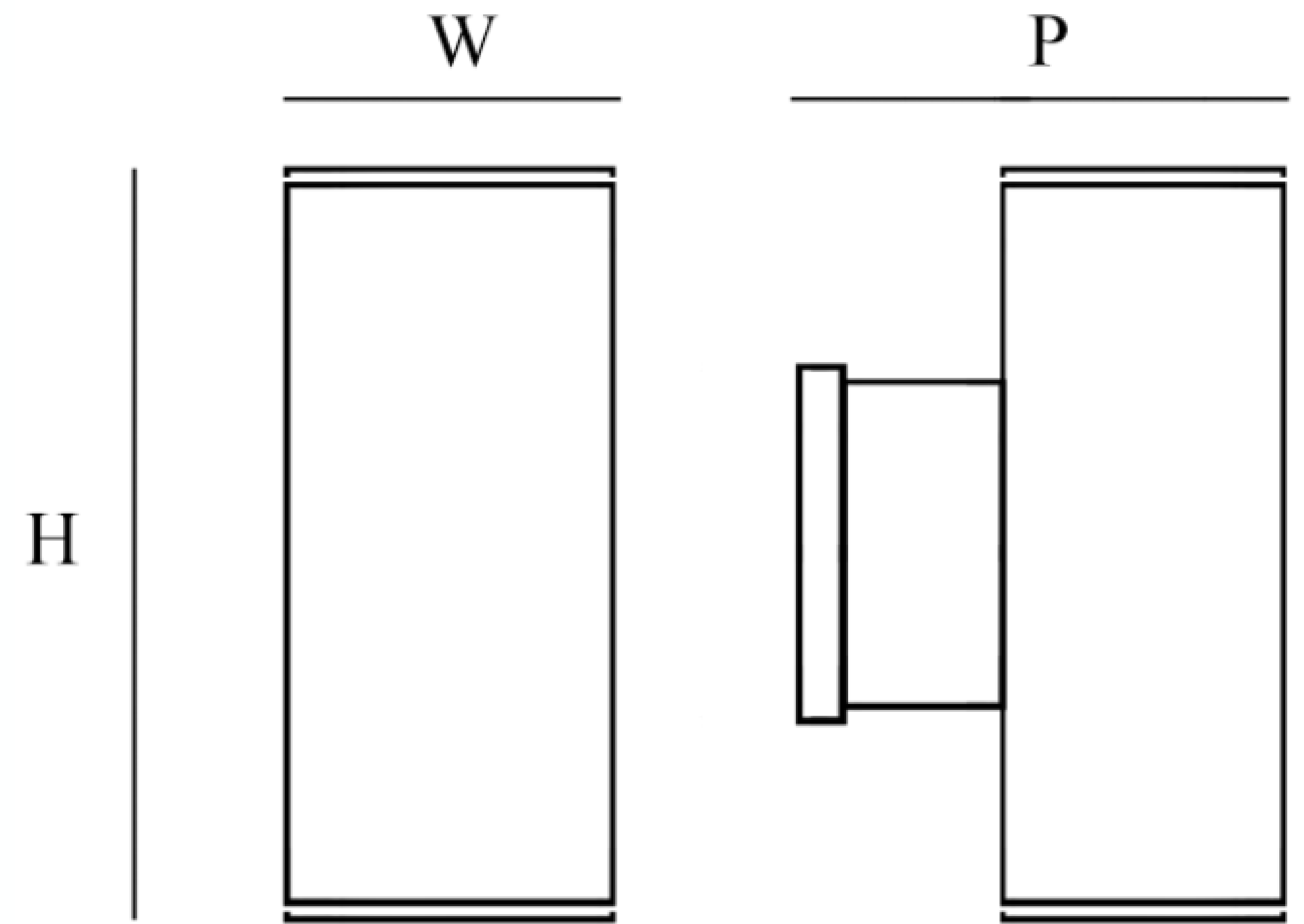
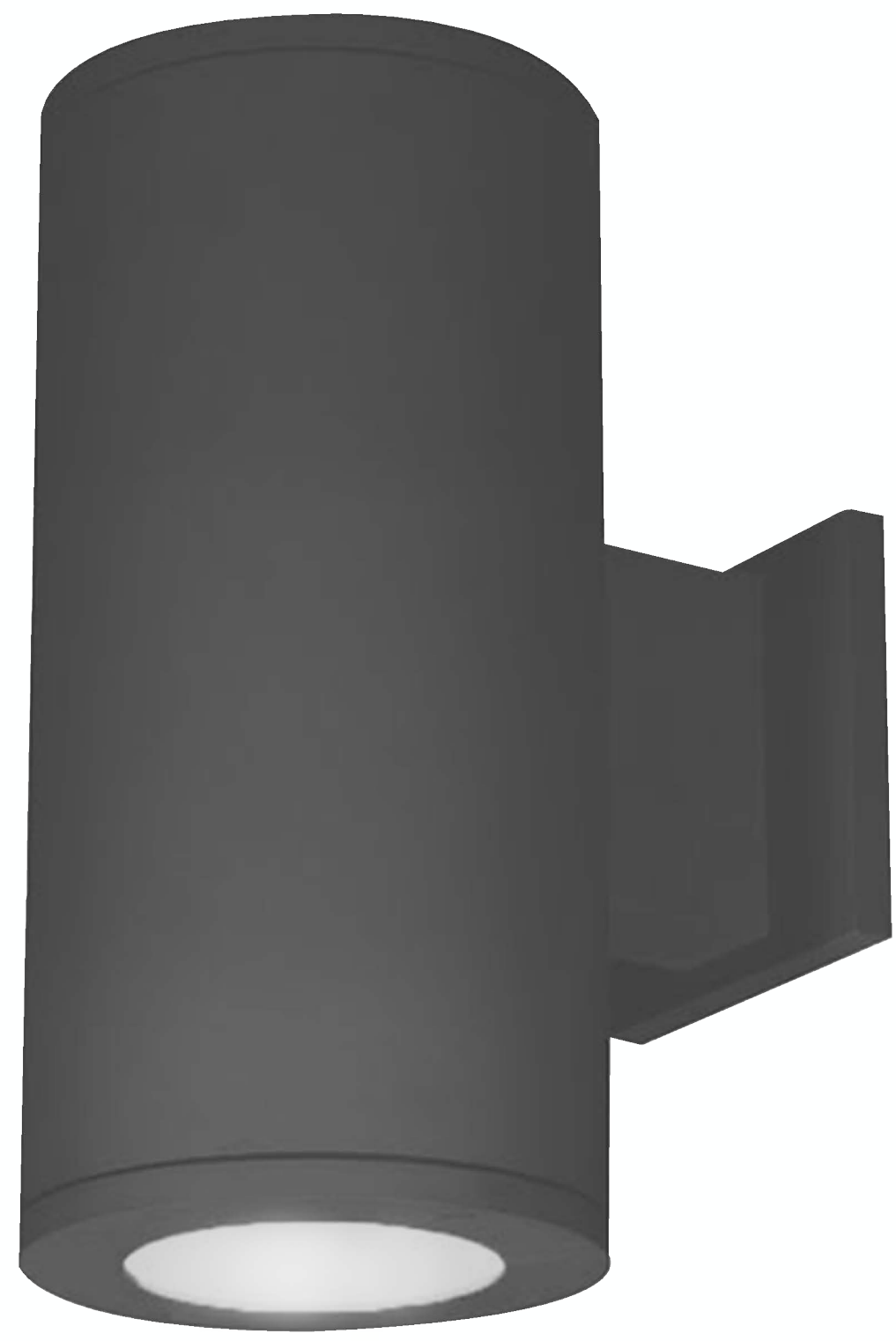
Mechanical resistance : IK 08



OPTICS



Code	Power W	Efficacy Lm/W	Colour Temp. K	Dimensions WxPxH mm	Driver	LED Chip	Weight Kg
11253E27	9 12 15	90	3000 4000 6000	120x164.5x218 mm	N/A	E27	1.035



CUSTOMISZE OPTIONS

3K

Light
Temperature
3000K

4K

Light
Temperature
4000K

6.5K

Light
Temperature
6500K

CRI
>80

Color
Rendering
Index >80

POLAR CURVE

