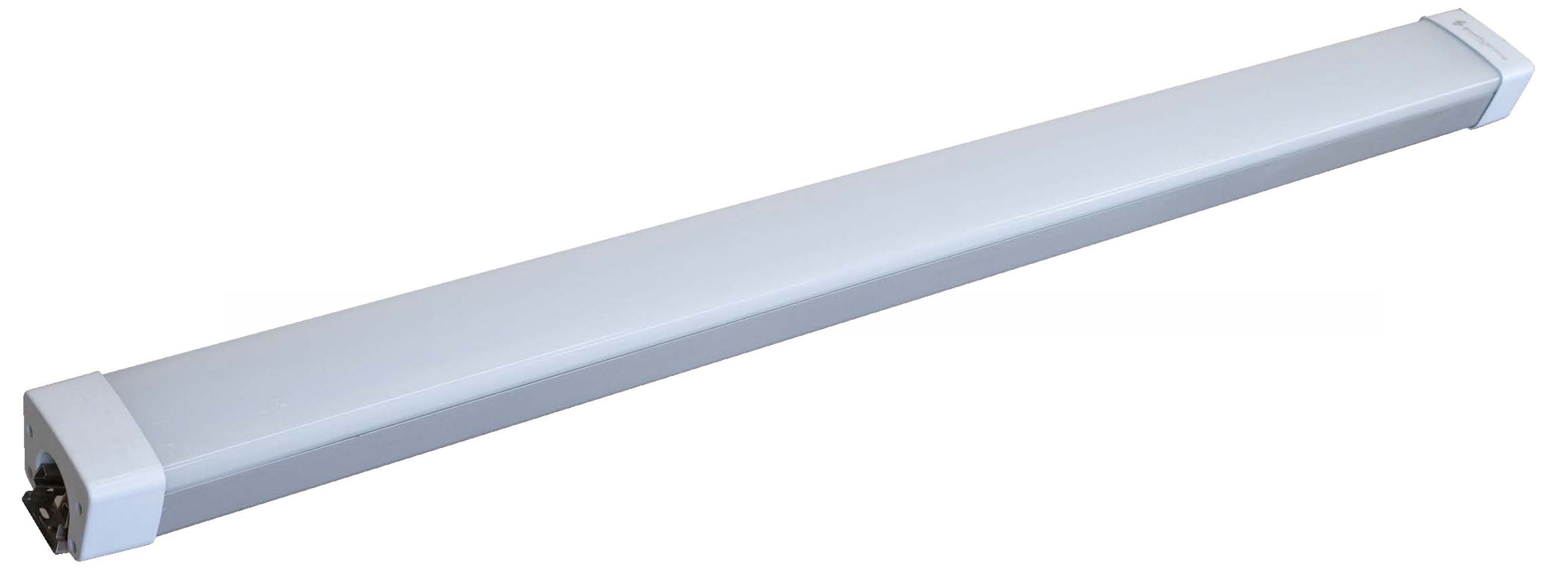


Linear HighBay

SLT-2001



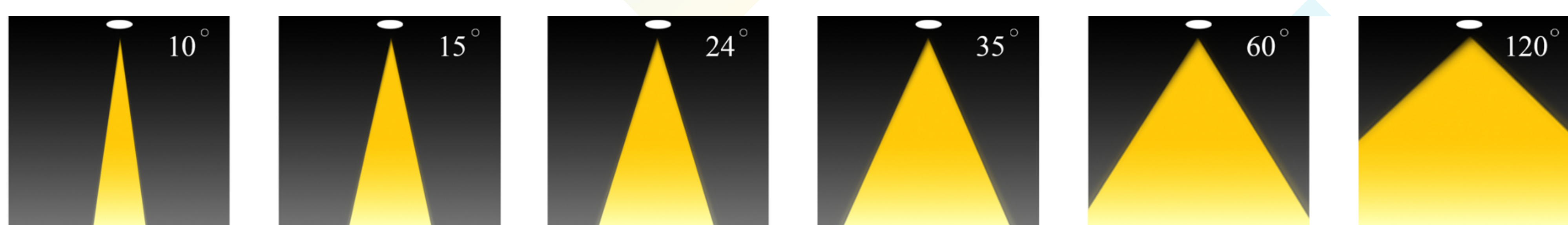
PERFORMANCE DATA

- Efficacy :** 110-130 Lm/W
- Input Voltage :** AC100-240W
- Frequency :** 50-60Hz
- Color Rendering :** CRI 80
- Color Temperature :** 6500K
- Life Time :** 50.000 hrs
- Optic :** 120°
- Class :** I

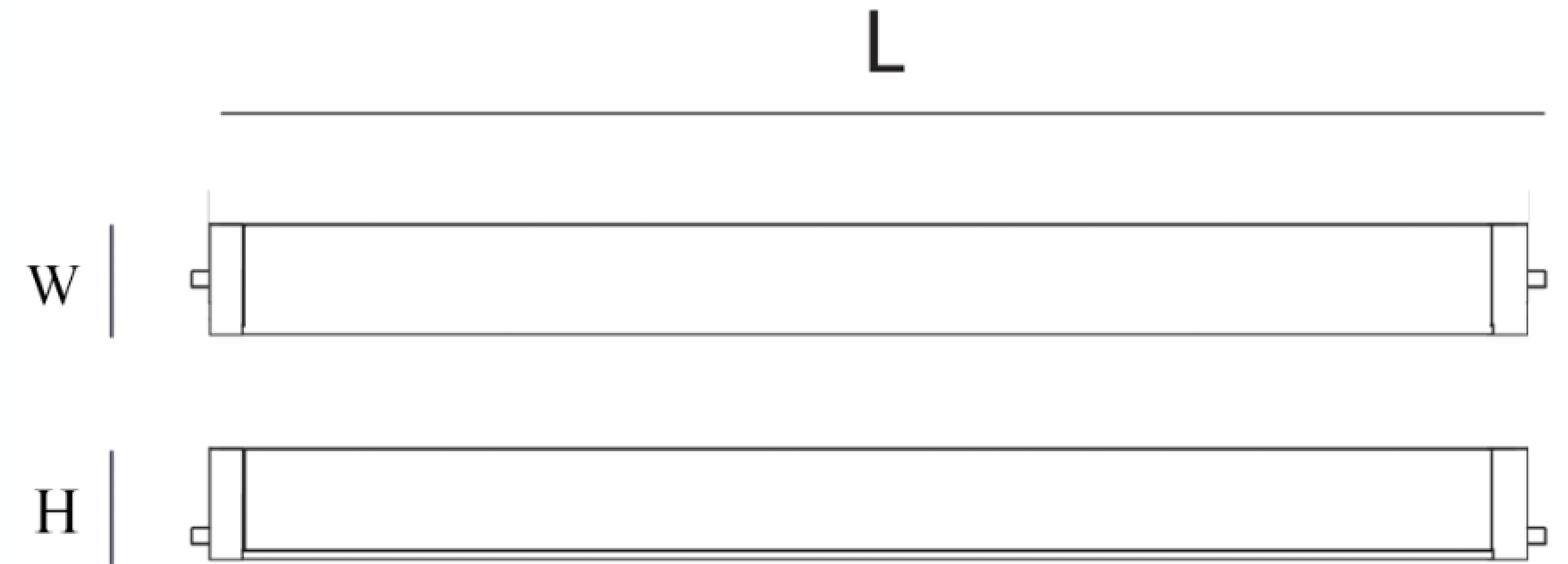
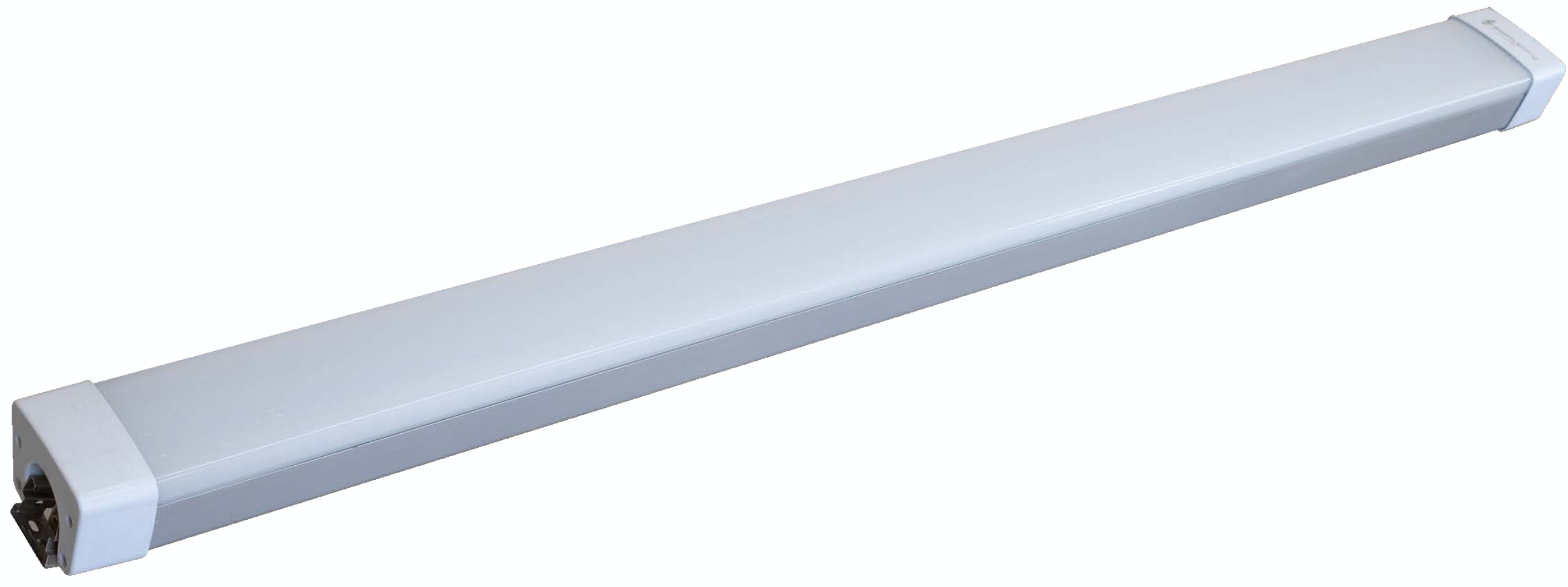
MECHANICAL SPECIFICATIONS

- Material :** Polycarbonate-Aluminum
- Mounting :** Wall - Surface Mounted
- Lens :** PC
- Finish :** White
- Protection Class :** IP 65
- Mechanical Resistance :** IK 08

OPTICS



Code	Power W	Efficacy Lm/W	Colour Temp. K	Dimensions L×W×H mm	Driver	LED Chip	Weight Kg
1271XX8120LX085	60 85	130	3000 4000 6500	1200×90×70 mm	CE Philips	Lumiled	2.095



CUSTOMISZE OPTIONS

3K

Light
Temperature
3000K

4K

Light
Temperature
4000K

6.5K

Light
Temperature
6500K

CRI
>80

Color
Rendering
Index >80

DALI

IK10

POLAR CURVE

