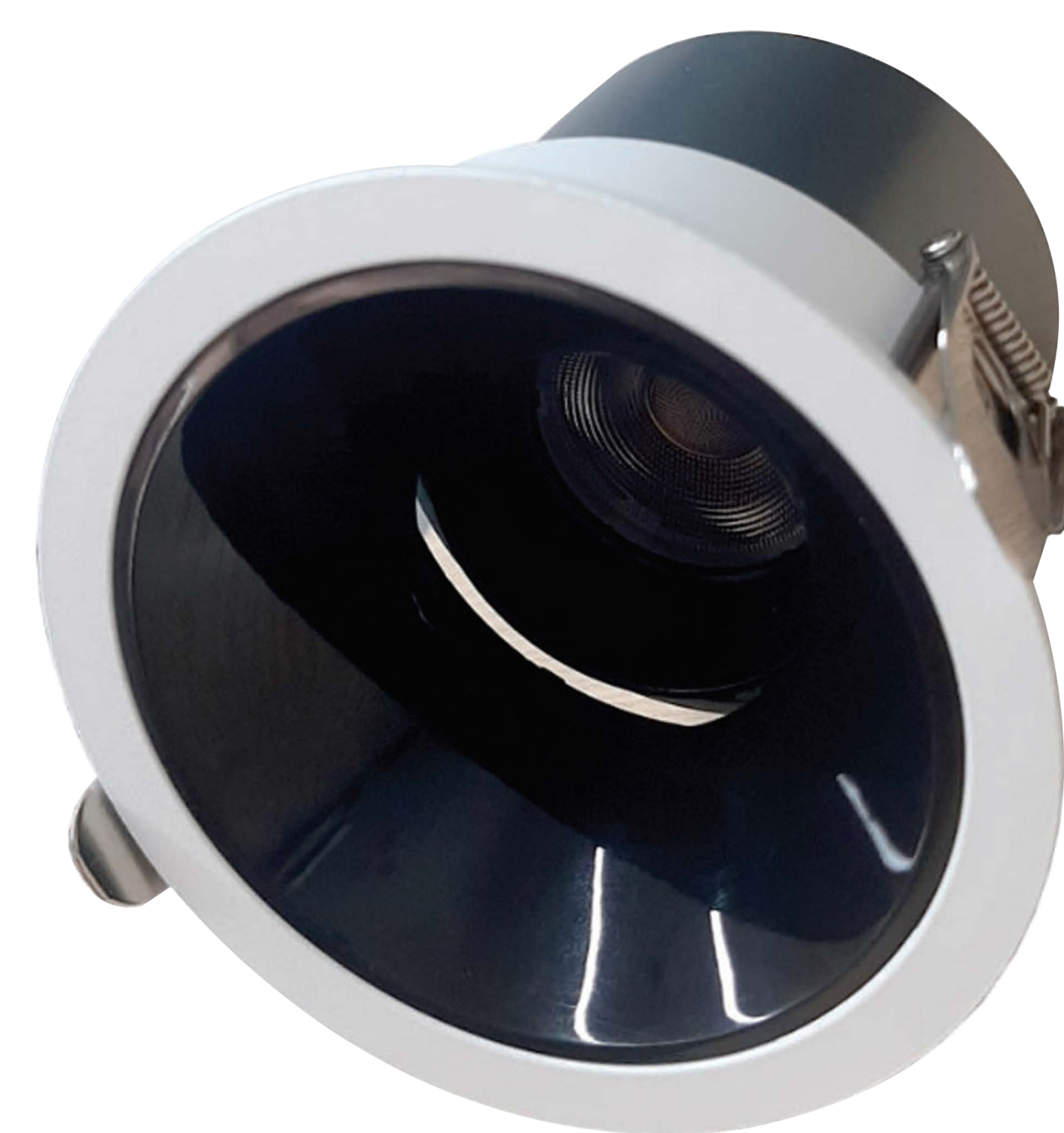


# Downlight

SLT-8036



## PERFORMANCE DATA

**Efficacy :** 90 Lm/W

**Input Voltage :** 220V

**Frequency :** 50-60Hz

**Color Rendering :** CRI 80

**Color Temperature :** 4000K

**Life Time :** 50.000 hrs

**Optic :** 24°

**Class :** II

**CutOut :** 55-75-90 mm

## MECHANICAL SPECIFICATIONS

**Material :** Die Cast Aluminum

**Mounting :** Recessed mounted

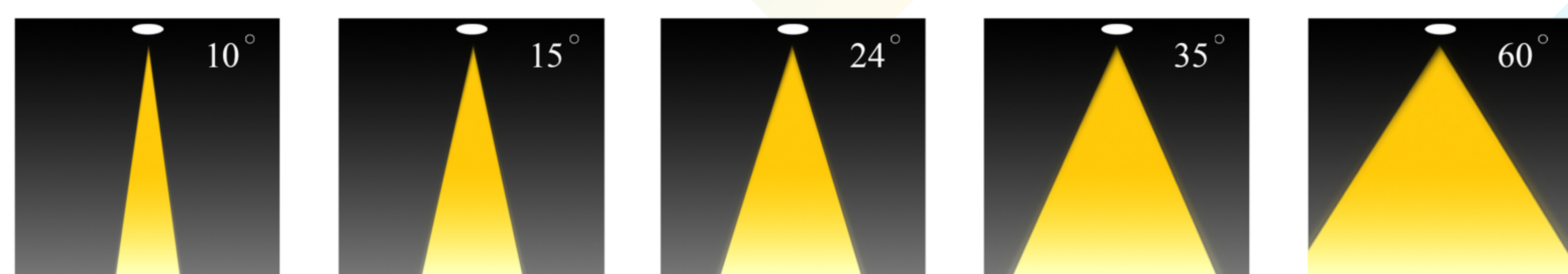
**Lens :** Glass

**Finish :** White

**Protection Class :** IP 20

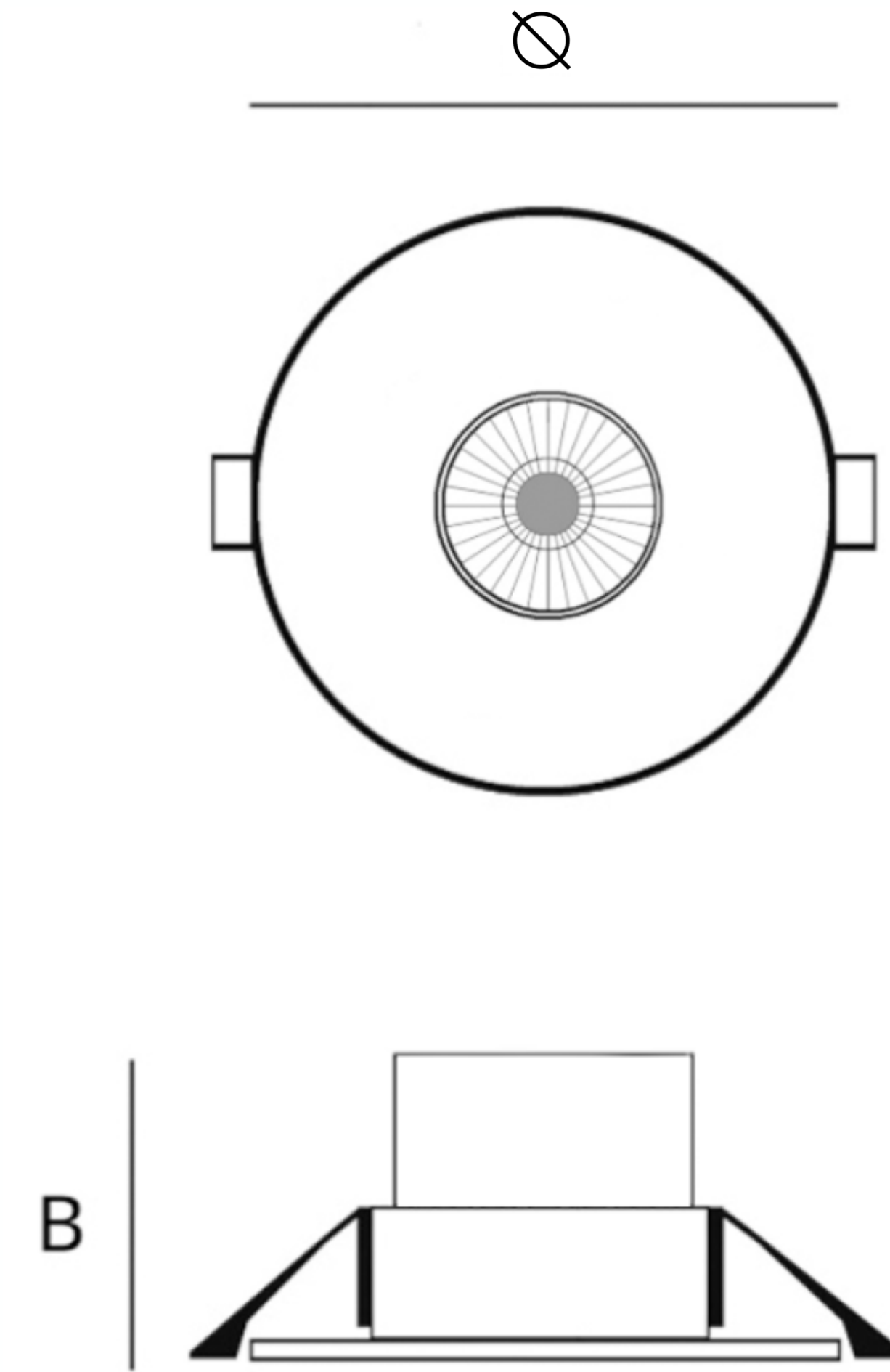
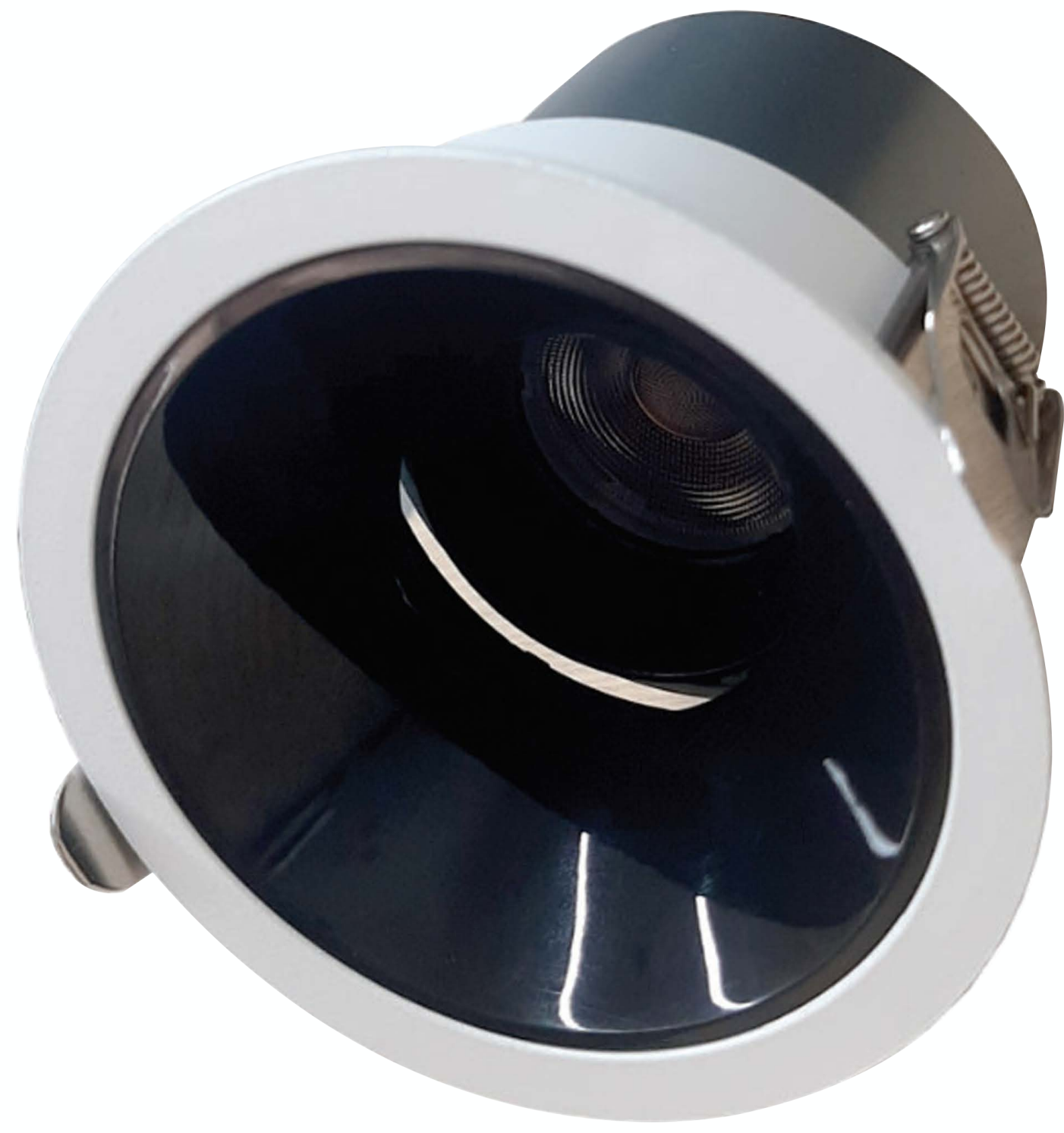
**Mechanical Resistance :** IK 07

## OPTICS





Code	Power W	Efficacy Lm/W	Colour Temp. K	Dimensions ∅×B mm	Driver	LED Chip	Weight Kg
80361408024CEXXX	7	90 Lm/W	3000	60×75 mm	Eaglerise	Cree	0.160
	10		4000	85×85 mm			0.240
	15			105×105 mm			0.390



## CUSTOMISZE OPTIONS

## POLAR CURVE

<b>3K</b>	<b>4K</b>	<b>6.5K</b>	<b>CRI &gt;80</b>	<b>DALI</b>
Light Temperature 3000K	Light Temperature 4000K	Light Temperature 6500K	Color Rendering Index >80	

