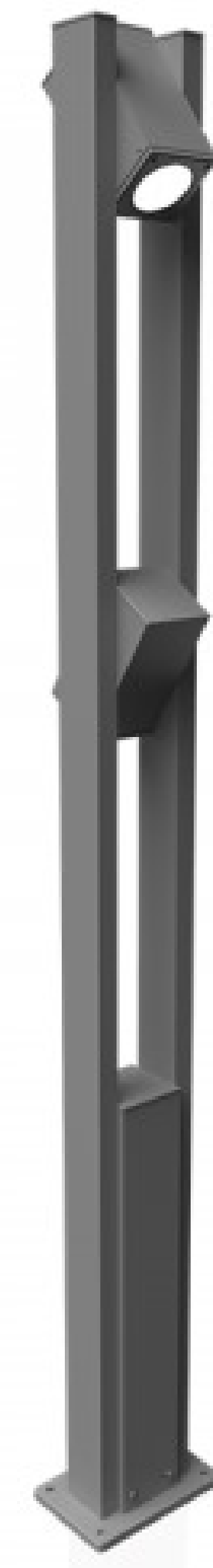


Pole Light

SLT-DP11



PERFORMANCE DATA

Efficacy : 110 Lm/W

Input Voltage : 220-240 V

Frequency : 50 Hz

Color Rendering : CRI 80

Color Temperature : 3000K

Life Time : 50.000 hrs

Optic : 90°

Class : I

MECHANICAL SPECIFICATIONS

Material : Aluminum

Mounting : Pole Mounted

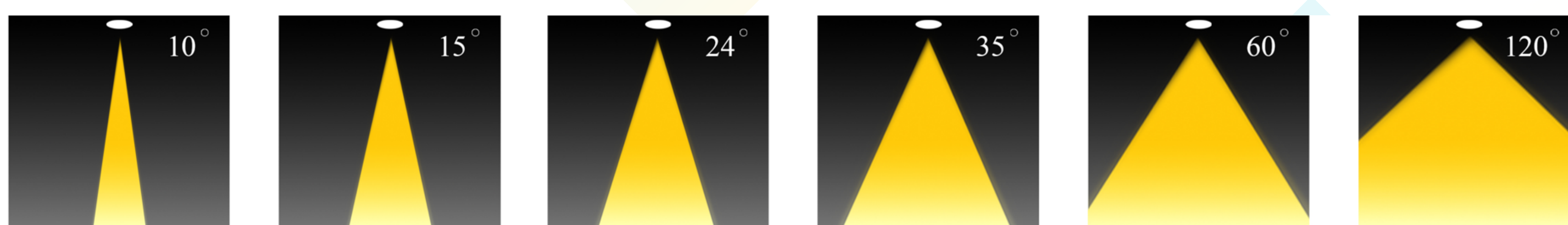
Lens : Glass

Finish : Black

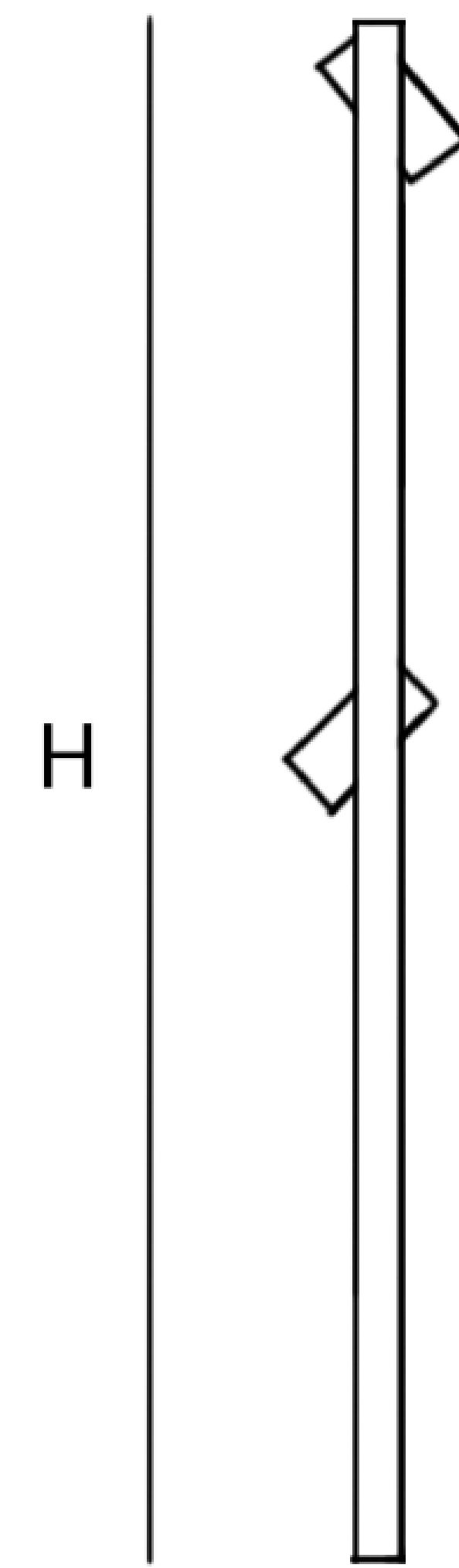
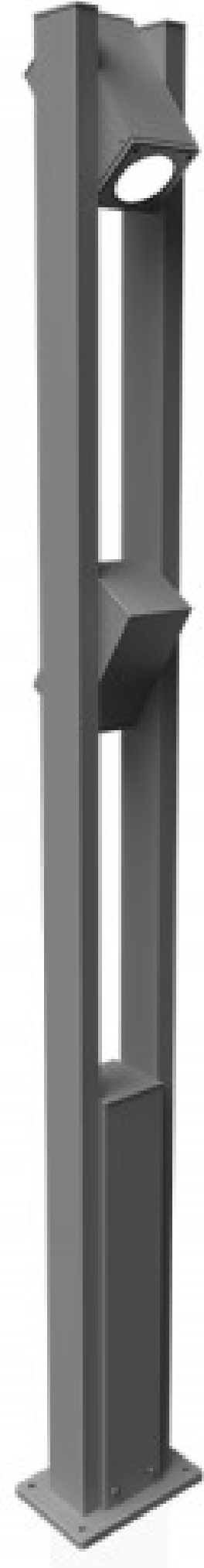
Protection Class : IP 65

Mechanical Resistance : IK 08

OPTICS



Code	Power W	Efficacy Lm/W	Colour Temp. K	Dimensions H mm	Driver	LED Chip
DP113308120XX2253400	2*25	110	3000	3400	Philips Eaglerise	VS Bridgelux



CUSTOMISZE OPTIONS

3K

Light
Temperature
3000K

4K

Light
Temperature
4000K

6.5K

Light
Temperature
6500K

CRI
>80

Color
Rendering
Index >80

FINISH

Black

DALI

POLAR CURVE

