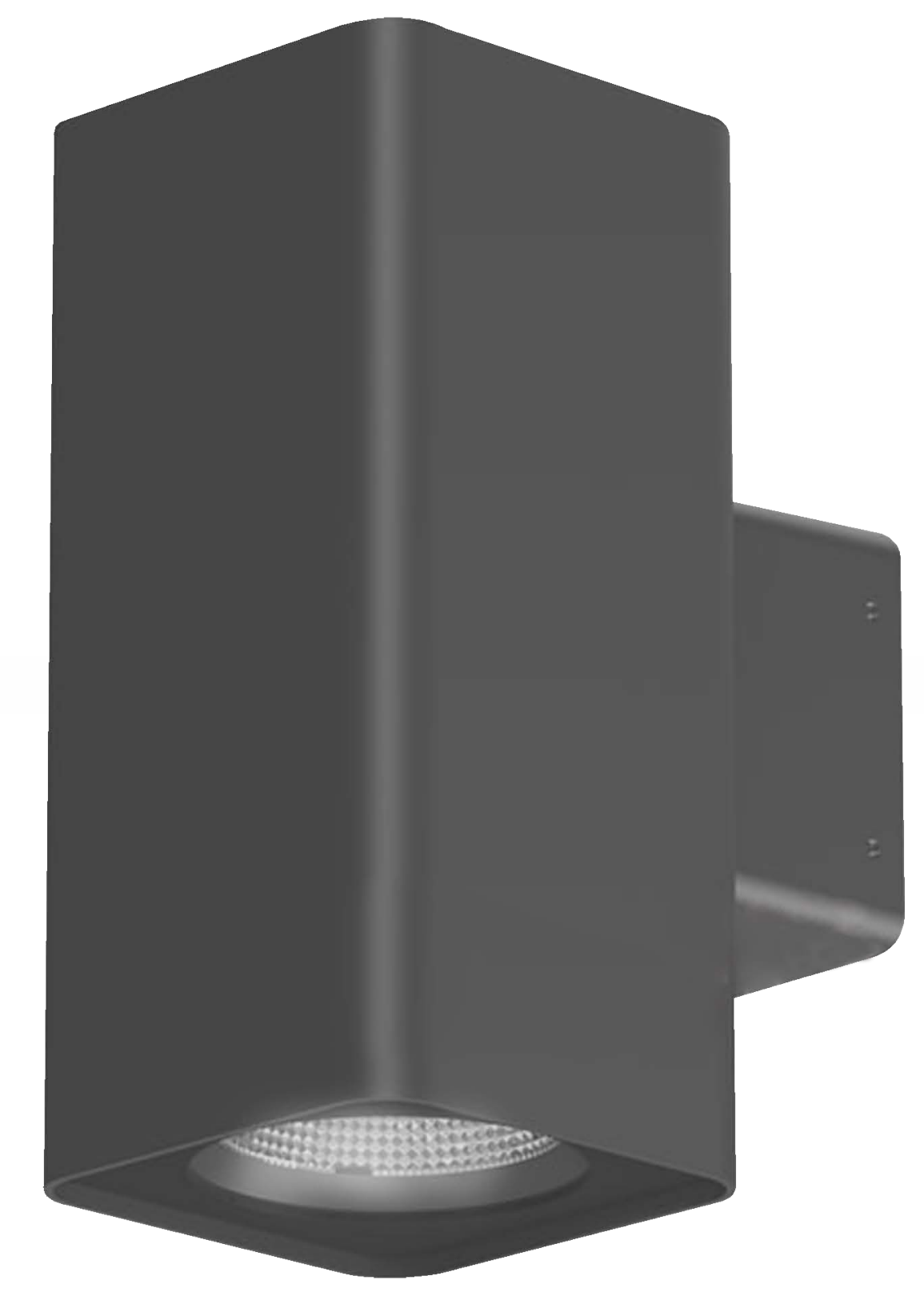


# Up & Down

SLT-UD05



## PERFORMANCE DATA

**Efficacy :** 77.6 Lm/W

**Input Voltage :** 110-240V

**Frequency :** 50 Hz

**Color Rendering :** CRI 80

**Color Temperature :** 3000K

**Life Time :** 50,000 hrs

**Optic :** 36°

**Class :** I

## MECHANICAL SPECIFICATIONS

**Material :** Die-casting Aluminum and extruded Aluminum body

**Mounting :** Surface/Wall Mounted

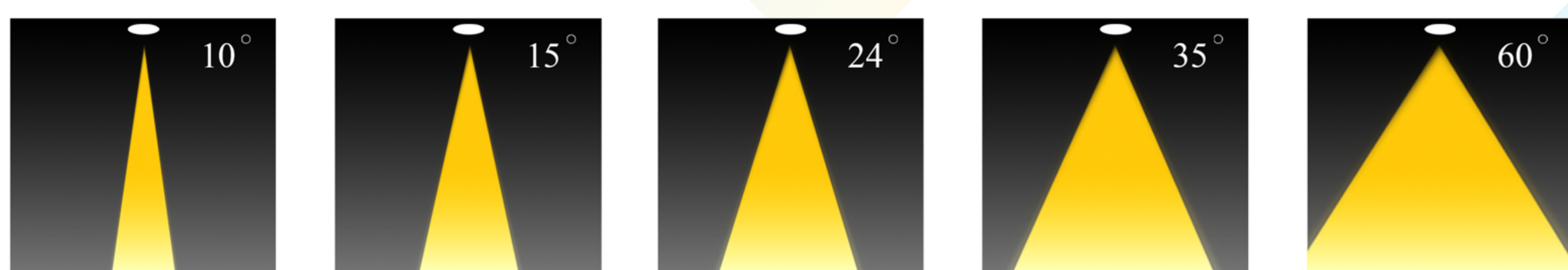
**Lens :** Clear glass

**Finish :** Gray RAL 7016

**Protection Class :** IP 65

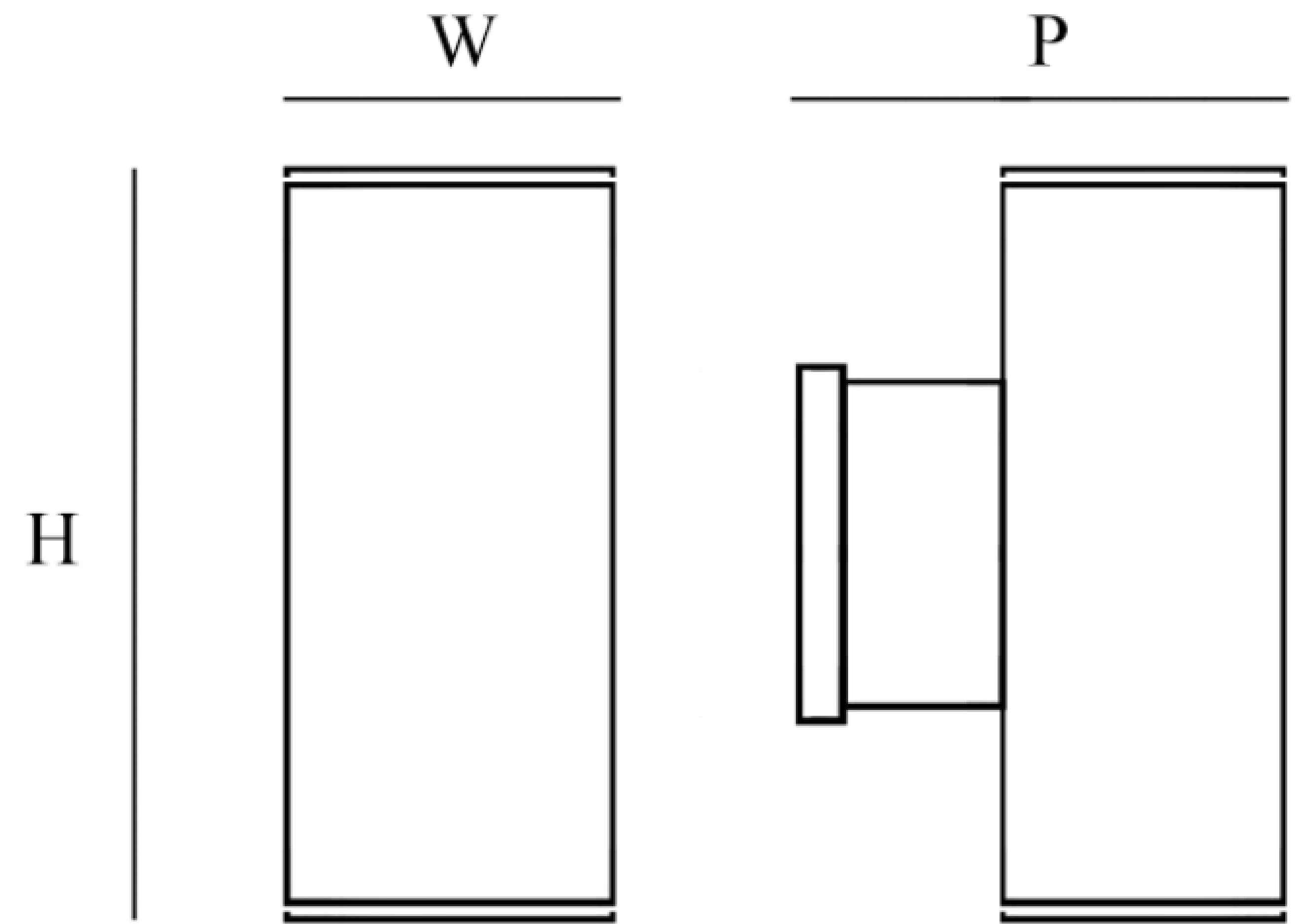
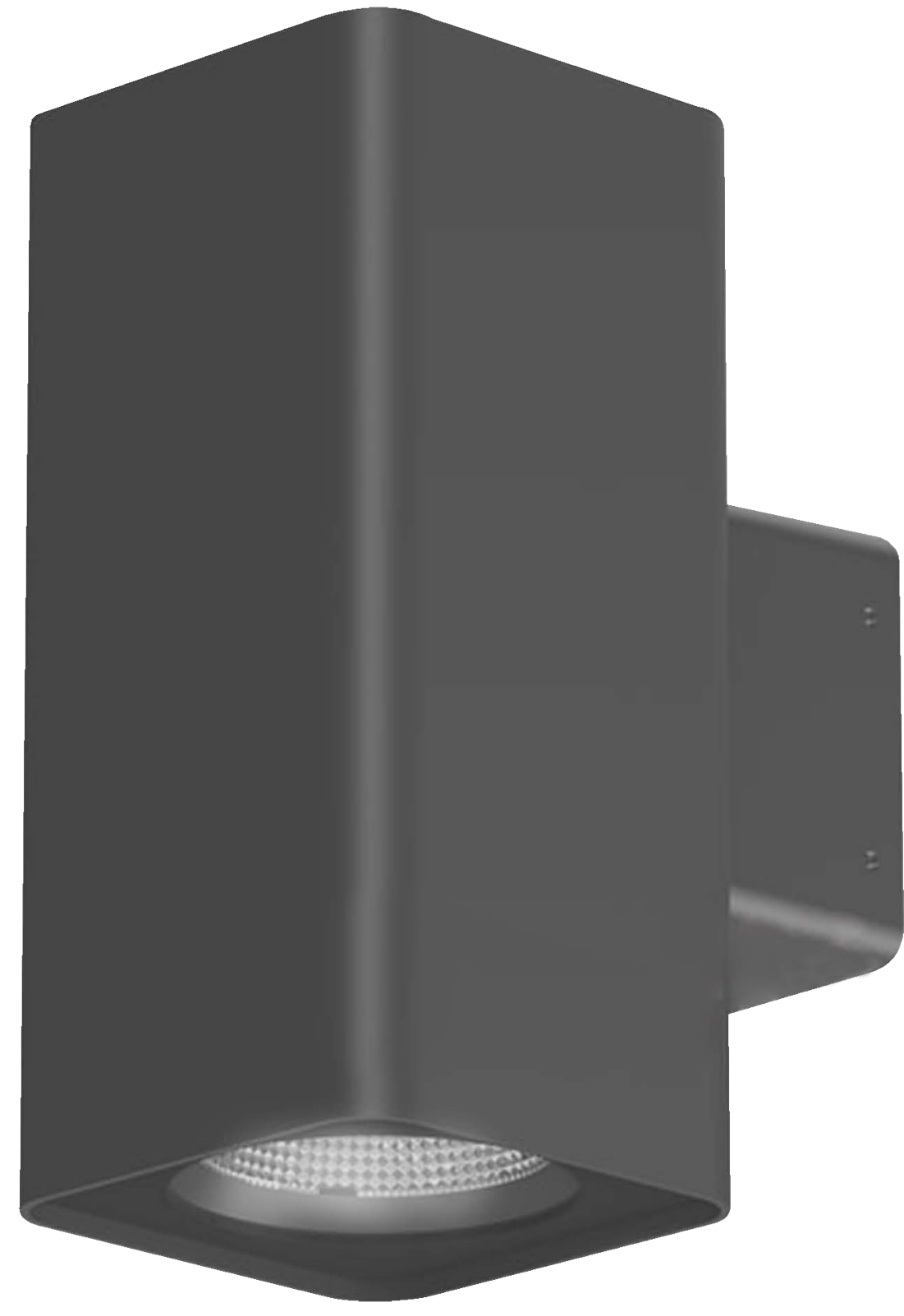
**Mechanical resistance :** IK 08

## OPTICS





Code	Power W	Efficacy Lm/W	Colour Temp. K	Dimensions WxPxH mm	Driver	LED Chip	Weight Kg
UD05330X036CX030	2*15	77.6	3000	110x157x300 mm	Tridonic Done	Cree	2.200



## CUSTOMISZE OPTIONS

<b>3K</b>	<b>4K</b>	<b>6.5K</b>	<b>CRI &gt;80</b>	<b>DALI</b>
Light Temperature 3000K	Light Temperature 4000K	Light Temperature 6500K	Color Rendering Index >80	

## POLAR CURVE

