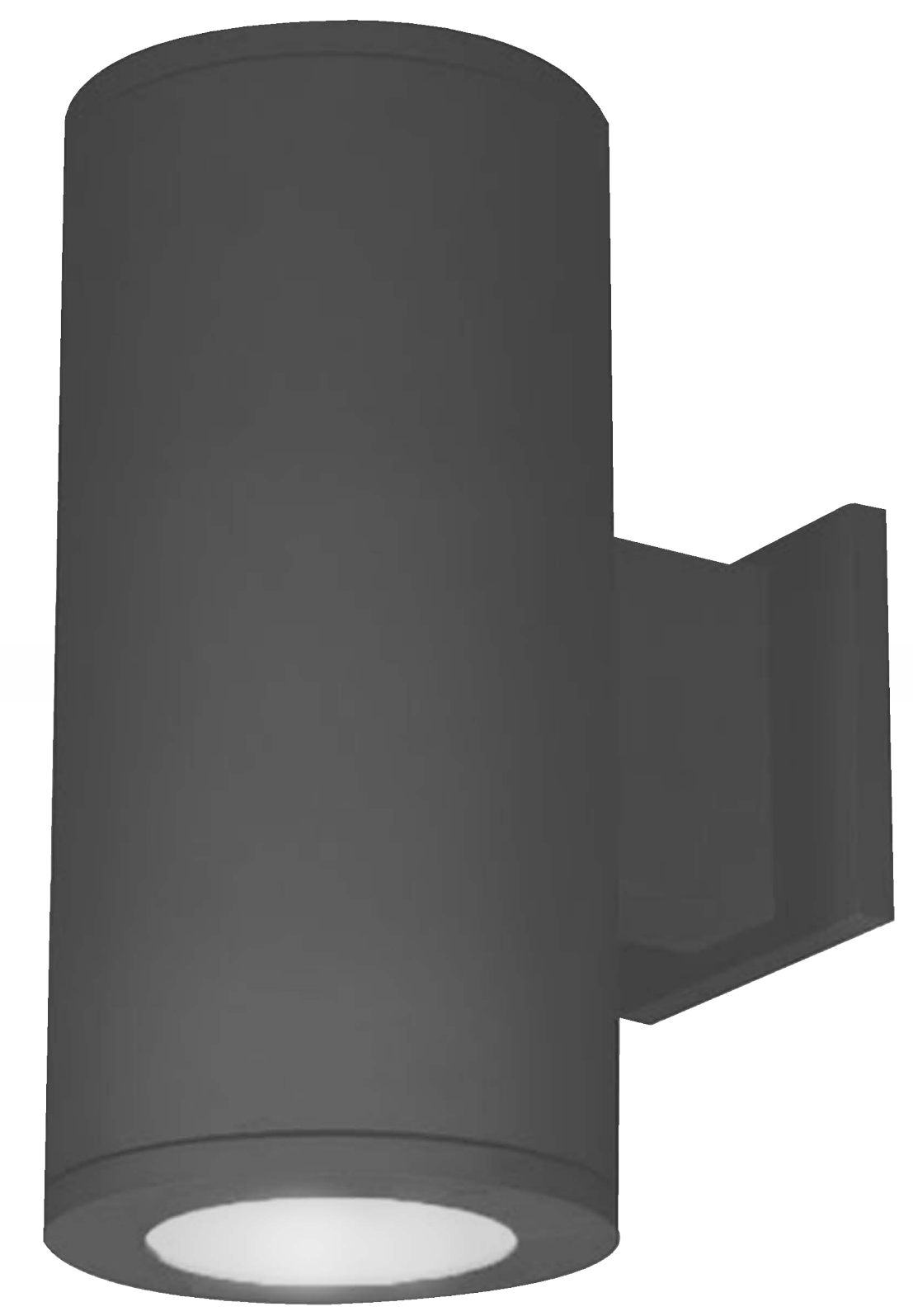


# Up & Down

UD-E27



## PERFORMANCE DATA

**Efficacy :** 90 Lm/W

**Input Voltage :** 110-240V

**Frequency :** 50Hz

**Color Rendering :** CRI 80

**Color Temperature :** 3000K

**Life Time :** 15,000-25,000 hrs

**Optic :** 120°

**Class :** I

## MECHANICAL SPECIFICATIONS

**Material :** Die-casting Aluminum and extruded Aluminum body

**Mounting :** Wall light, up and down version

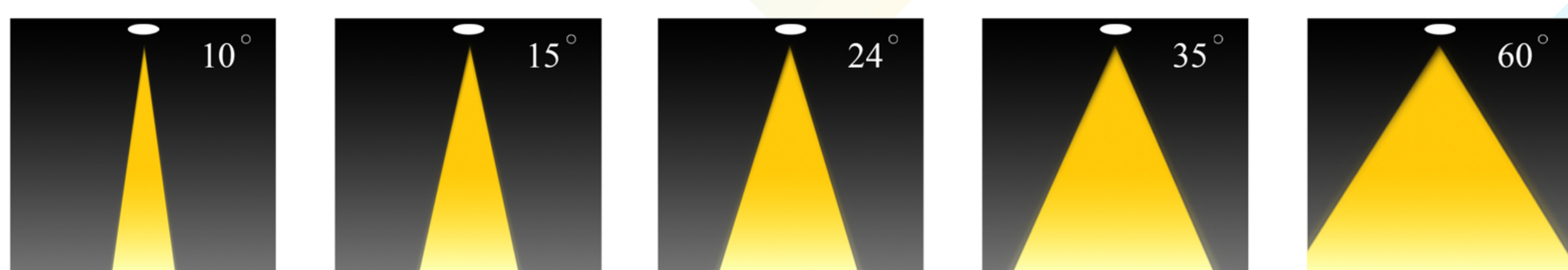
**Lens :** Clear Glass

**Finish :** Gray RAL 7016

**Protection Class :** IP 65

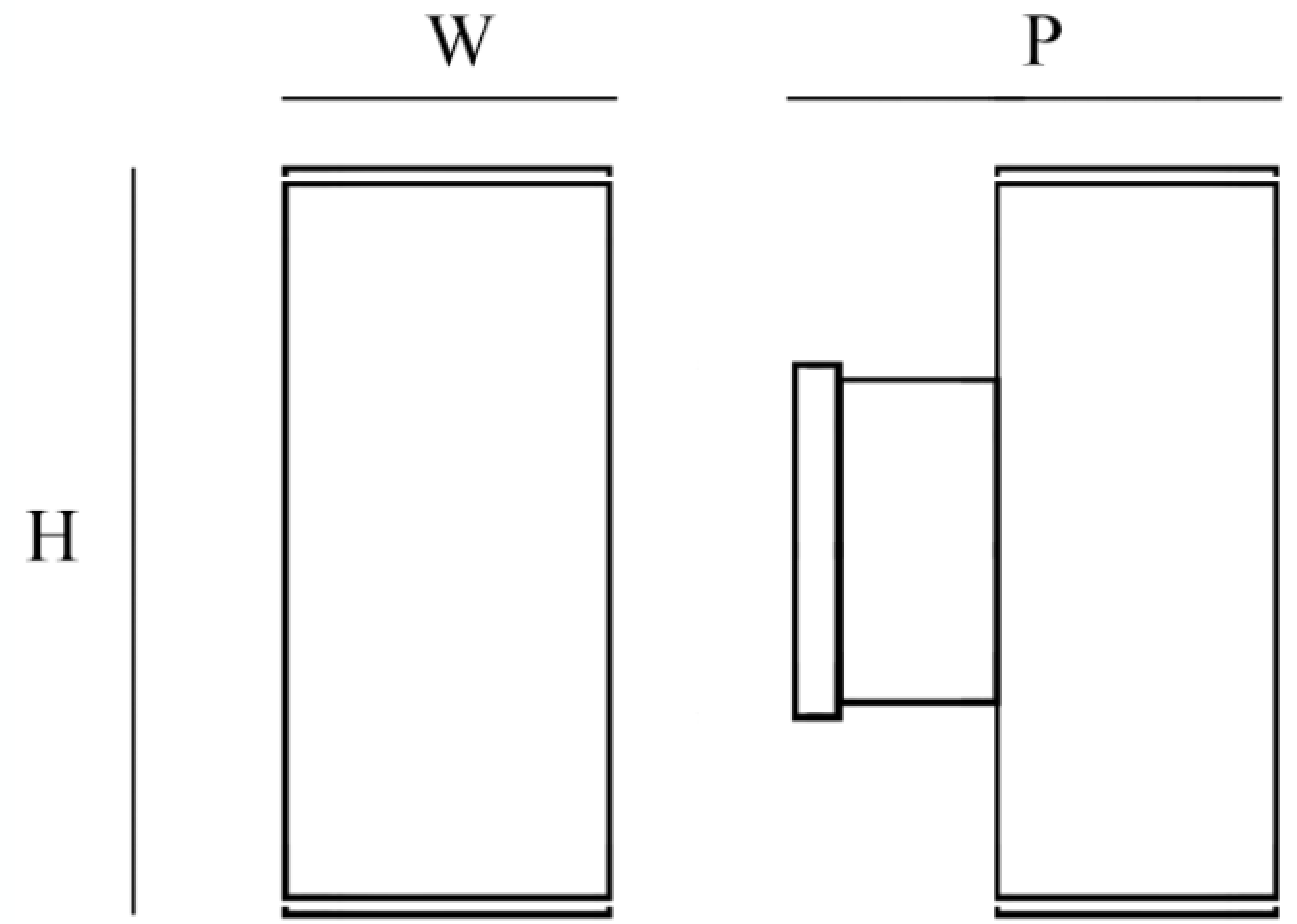
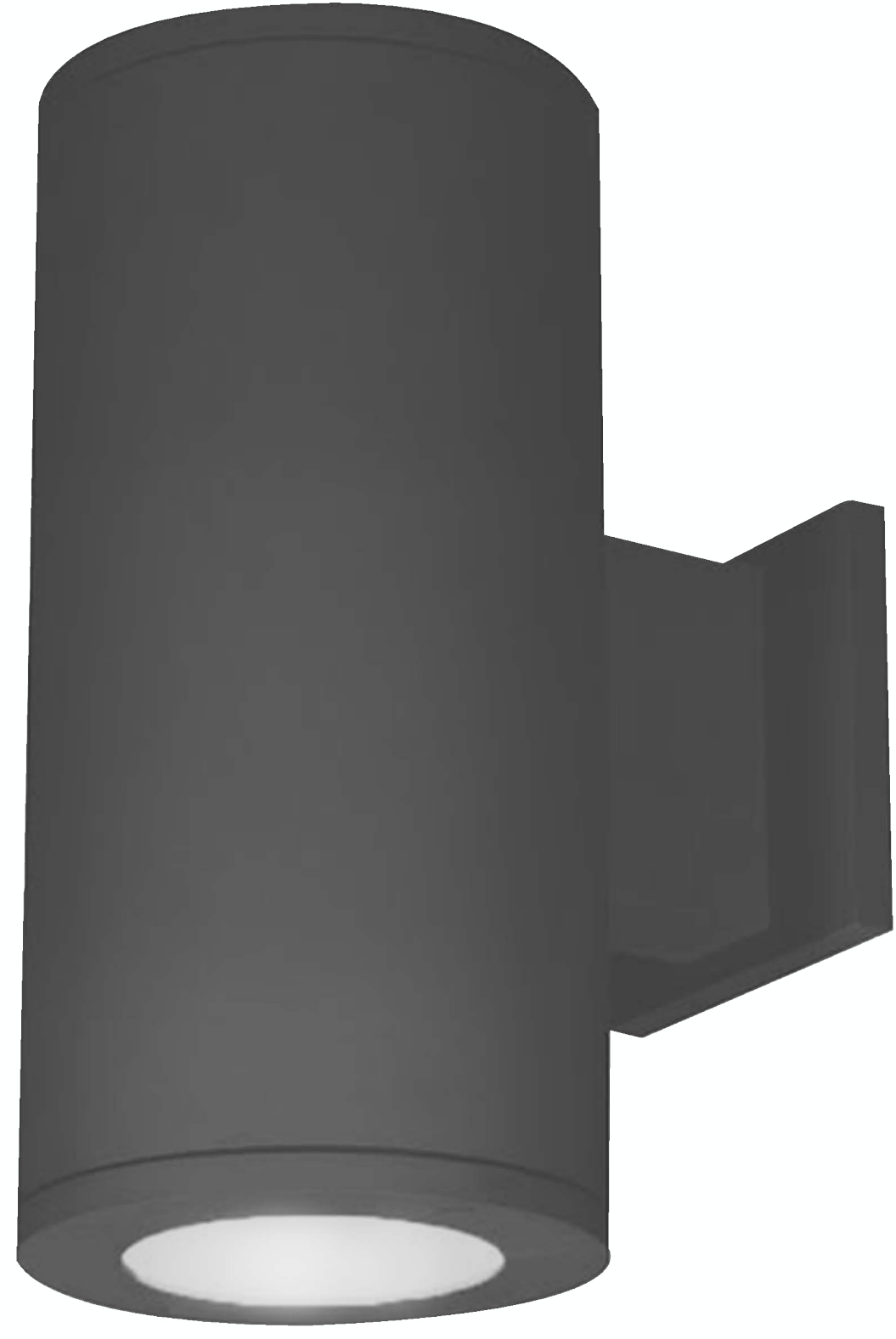
**Mechanical resistance :** IK 08

## OPTICS





Code	Power W	Efficacy Lm/W	Colour Temp. K	Dimensions WxPxH mm	Driver	Lamp Base	Weight Kg
UD200	2*9 2*12 2*15	90	3000 4000 6000	120x164.5x300 mm	N/A	E27	1.300



## CUSTOMISZE OPTIONS

<b>3K</b>	<b>4K</b>	<b>6.5K</b>	<b>CRI &gt;80</b>
Light Temperature 3000K	Light Temperature 4000K	Light Temperature 6500K	Color Rendering Index >80

## POLAR CURVE

